

Fares Radically Reduced to 137 Cities

—Also 10% Off On All Round Trips

Now "It Costs No More to Travel by Air" When You Fly With United Air Lines



UNITED AIR LINES "COAST TO COAST LIMITED"

The "Coast to Coast Limited", leaving Cleveland Municipal Airport at 9:15 A. M. daily, is the fastest schedule between New York, the Great Lakes Area, the Rocky Mountain Region and the Pacific Coast—28 hours Eastbound, 31 hours Westbound—two westbound schedules daily.

Some Examples of SPEED at LOW COST

From To	Washington* Old Fare New	Cleveland Old Fare New	Toledo Old Fare New	Detroit Old Fare New
EAST				
10% Reduction on All Round Trips*				
Cleveland	\$ 7.00 \$ 6.15	\$ 11.90 \$ 8.95
New York	\$ 39.75 \$ 32.00	46.10 38.15	51.65 40.95
Boston	55.60 47.85	61.95 54.00	67.50 56.80
Philadelphia	45.00 37.25	51.35 43.40	56.90 46.20
Pittsburgh	8.00 7.00	14.15 10.80
Washington	28.65 22.00	35.65 28.15	40.55 30.95
WEST				
Cleveland	\$ 28.65 \$ 22.00
Detroit	40.55 30.90	\$ 11.00 \$ 8.95
Toledo	35.65 28.15	7.00 6.15	\$ 4.50
Chicago	48.40 37.95	19.75 15.95	\$ 16.86 12.10	\$ 13.25 13.25
Minneapolis	68.40 57.95	39.75 35.95	36.80 32.10	33.25 33.25
Omaha	84.40 63.93	55.75 41.93	52.86 38.06	49.25 39.23
Denver	133.00 100.32	105.25 78.32	102.36 74.47	98.75 75.62
Salt Lake	158.90 118.23	130.25 96.23	127.36 92.38	123.75 93.53
Los Angeles	198.40 152.00	169.75 130.00	166.86 127.10	163.25 128.25
San Francisco	198.40 152.00	169.75 130.00	166.86 127.10	163.25 128.25
Portland	198.40 152.00	169.75 130.00	166.86 127.10	163.25 128.25
Seattle	198.40 152.00	169.75 130.00	166.86 127.10	163.25 128.25
Spokane	198.40 152.00	169.75 130.00	166.86 127.10	163.25 128.25
SO'WEST				
Minneapolis	\$ 58.40 \$ 47.07	\$ 29.75 \$ 25.07	\$ 26.86 \$ 21.22	\$ 22.37 \$ 39.99
Kansas City	73.40 62.95	44.75 40.95	41.86 37.10	38.25 68.85
Tulsa	57.25 53.45	54.36 49.60	50.76 91.35
Oklahoma City	64.25 60.45	61.36 56.60	57.76 103.95
Dallas-Ft. Worth	74.25 70.45	71.36 66.60	67.75 121.95

*—No round trip reduction on Cleveland-Pittsburgh-Washington portion of air fares.

RESERVATIONS—See Ticket Offices on Page 3 or Inquire:

UNITED AIR LINES

General FARE REDUCTIONS

WITH 10% REDUCTION ON ALL ROUND TRIPS



Air Transportation at Its Best

Copyright 1931, United Air Lines, Inc.

UNITED AIR LINES

BOEING AIR TRANSPORT
NATIONAL AIR TRANSPORT



PACIFIC AIR TRANSPORT
VARNEY AIR LINES

SUBSIDIARY OF UNITED AIRCRAFT & TRANSPORT CORP.

8—Cleveland

★ EFFECTIVE JANUARY 1, 1932 ★



"AIR TRANSPORTATION AT ITS BEST"

UNITED AIR LINES serves forty-two cities in eighteen states with direct air and rail connections to scores of other points. Its lines, in addition to linking the Atlantic to the Pacific seaboard, connect the Great Lakes area to the Southwest, the Pacific Northwest to the Rocky Mountain region, and provide the only through service on the Pacific Coast.

Pioneer Operators On Five Strategic, National Routes

United Air Lines' four subsidiaries are the pioneer air mail, express and passenger-plane operators on the five strategic, national routes pictured above. The subsidiary companies of United Air Lines are: National Air Transport (New York-Chicago and Chicago-Dallas); Boeing Air Transport (Chicago-San Francisco); Varney Air Lines (Salt Lake City-Seattle); and Pacific Air Transport (San Diego-Seattle)

Seventeen Million Miles NIGHT Flying Experience

United Air Lines provides "air transportation at its best"—the only air line in the world with 35 million miles flying experience; with more miles flown at night (over 17 million miles) than all European nations combined! Over the routes where subsidiaries inaugurated air-mail, express and passenger service five years ago, United Air Lines now operates a fleet of 100 late-type airplanes averaging 35,000 miles a day for a total of 12,000,000 miles annually over 6,119 miles of Government improved and lighted airways.

Famous Wasp and Hornet Engines

The latest features of aeronautical design and construction suggested by millions of miles of regular schedule flying are incorporated in United's fleet of passenger planes, all of which are powered with the reliable Pratt & Whitney "Wasp" and "Hornet" engines.

Veteran Passenger and Mail Pilots

United's veteran passenger and mail pilots, whose average experience is more than 20 times the flying experience required by the Govern-

ment for transport pilots, are generally recognized as being on a par with any group of commercial flyers in the world. They are thoroughly experienced transport pilots, accustomed to all variations of flying conditions—night or day, winter or summer, at sea level or over mountainous terrain. Included in the personnel are nine of the nation's ten ranking air mail pilots in point of continuous service. United Air Lines has a pilot personnel of 150. Their first consideration is your comfort and safety.

Four Experts Aground For Every Pilot Aloft

With United Air Lines, travel by air is much more than just a plane in the sky. Back of the millions of dollars invested in 100 late-type transport planes, modern hangar-depots, servicing plants and extensive ground facilities, is a highly skilled operating and executive personnel (a ground staff of 600). There are four experts on the ground for every pilot aloft.

All Proved Aids to Air Navigation Employed

All proved aids to aerial navigation are employed, including the most extensive two-way voice radio communication system (between pilots and ground stations) of any air line in the world. This airplane radio-telephone equipment not only permits communication between pilots and ground stations and other planes in flight; but also reception of U. S. Department of Commerce directive radio beacon signals. Pilots also have the benefit of the extensive and complete airways weather reporting service provided by trained meteorologists of the United States Weather Bureau and broadcast hourly by the Aeronautics Branch of the Department of Commerce.

Fly With United Air Lines

Based on the firm foundation of five years' flying experience and 35,000,000 miles of successful air transport operations, United Air Lines invites you to travel on its nation-wide air passenger, mail and express service.

TICKET OFFICES

AND AUTHORIZED REPRESENTATIVES OF UNITED AIR LINES

ALBANY, N. Y.	American Airways, Tel. 6-7171	Municipal Airport
BAKERSFIELD, CALIF.	Tel. 2962	Kern County Airport
BOISE, IDAHO	Tel. 2901	Municipal Airport
BOSTON, MASS.	Colpitts Tourist Agency, 262 Washington St., Tel. Liberty 3533	Municipal Airport
BUFFALO, N. Y.	American Airways, Tel. Fillmore 4044	Municipal Airport
CHEYENNE, WYO.	Ticket Office, Tel. 3331	Municipal Airport
CHICAGO, ILL.	400 S. Michigan Ave. (to 11:00 P. M.) After 11:00 P. M., Telephone Grovehill 1400	Municipal Airport
CINCINNATI, O.	Air Travel Bureau, Gibson Hotel	Tel. Main 6600
CLEVELAND, OHIO	(After 8:00 P. M., Tel. Prospect 3900) Ticket Office, 708 Superior, N. E. Between 8:00 and 8:00 PM, Tel. Prospect 1500	Municipal Airport
COFFEYVILLE, KAN.	Airport Office, Tel. 467	Coffeyville Airport
COLUMBUS, OHIO	Hotel Neil House	Tel. Main 5221
COUNCIL BLUFFS, IOWA	Chieftan Hotel	Tel. 932
DALLAS, TEXAS	(After 6:00 P. M.) Tel. 5-6181 Ticket Office, 1402 Commerce St. (8:00 A. M.—6:00 P. M.)	Love Field
DAVENPORT, IOWA	Tel. Moline 2000	Moline Airport
DENVER, COLO.	Western Air Express, 1717 Tremont St., Tel. Keystone 3226	Denver Airport
DES MOINES, IOWA	Tel. 6-2117	Municipal Airport
DETROIT, MICH.	Airlines Tekt. Ofc., 1251 Washington Blvd., Tel. Cherry 5335	Wayne County Airport
FRESNO, CALIF.	Ticket Office, Tel. 6-2169	Meacham Field
INDIANAPOLIS, IND.	Western Union Telegraph Offices, Tel. Riley 4321	Chandler Municipal Airport
IOWA CITY, IOWA	Tel. 425	Municipal Airport
KANSAS CITY, MO.	Night Telephone Norcay 1093	Municipal Airport
LINCOLN, NEB.	Tel. B. 2629	Municipal Airport
LOS ANGELES, CALIF.	Ticket Office, 749 S. Hill St. United Airport, Burbank, Los Angeles County, Calif.	Trinity 3434 Tel. Hollywood 1666
LOUISVILLE, KY.	Brown Hotel	Tel. Main 3360
MEDFORD, ORE.	Tel. 241	Municipal Airport
MILWAUKEE—North Shore Lines		Tel. Marquette 3770
MINNEAPOLIS, MINN.	Wold Chamberlain Field	Tel. Dupont 13-6352
Northwest Airways, Inc.		Tel. Atlantic 4231
Burlington Route		Tel. Main 3561
Chicago Great Western R. R.		Tel. Main 3561
MOLINE, ILL.	Ticket Office, Tel. Moline 2000	Moline Airport
Le Claire Hotel		Tel. Moline 3900
NEWARK, N. J.	Open 24 hours daily, Tel. Market 3-6207	Newark Airport
NEW YORK, N. Y.	Newark Municipal Airport United Air Lines Ticket Office, 36 W. 40th St. Ticket Office, Hotel Roosevelt	Tel. Longacre 5-1370 Tel. 4-6352
Commodore Hotel Lobby		Tel. Vanderbilt 3-6000
Night Reservations, New York Central Ticket Office		Tel. Vanderbilt 3-3200
U. A. L. Passenger Station open 24 hrs. daily, Newark Airport, Tel. Market 3-6207		
NORTH PLATTE, NEB.	Tel. 29	Municipal Airport
OAKLAND, CALIF.	Tel. Trinidad 1700	Municipal Airport
OKLAHOMA CITY, OKLA.	Ticket Office, Tel. 3-4214	Oklahoma City Airport
OMAHA, NEB.	Tel. Webster 1637	Municipal Airport
Ticket Office, Corner 15th and Harney Sts.		Tel. Jackson 0625
PASCO, WASH.	Tel. 31	Municipal Airport
PITTSBURGH, PA.	Aero Club of Penna, 1339 Walnut St., Tel. Penney 1877	Municipal Airport
PHILADELPHIA, PA.	Air Travel Bureau, Wm. Penn Hotel	Tel. Atlantic 2732
Air Travel Bureau, Pittsburgher Hotel		Tel. Atlantic 0218
PORTLAND, ORE.	Tel. Walnut 0403 (After 6:00 P. M.)	Municipal Airport
Ticket Office, 331 Morrison St.		Tel. Beacon 6194
RENO, NEV.	Tel. Reno 3691	Hubbard Field
ROCHESTER, N. Y.	American Airways, Tel. Genesee 2480	Municipal Airport
ROCK ISLAND, ILL.	Ft. Armstrong Hotel, Tel. R. I. 5700	Moline Airport
SACRAMENTO, CALIF.	Tel. Main 2216	Municipal Airport
ST. LOUIS, MO.	American Airways, Co-op. Air Tkt. Ofc., 405 N. 12th St., Tel. Garfield 5302 Consolidated Air Tkt. Office, 1201 Locust St., Tel. Chestnut 8569	Municipal Airport
ST. PAUL, MINN.	Holman Municipal Airport Northwest Airways	Tel. Riverview 4500 Tel. Cedar 4448
Burlington Route		Tel. Cedar 4448
Chicago Great Western R. R.		Tel. Riverview 4200
SALT LAKE CITY, UTAH	Airport Tel. Wasatch 3321	Municipal Airport
Ticket Office, Hotel Utah		Tel. Wasatch 2092
SAN DIEGO, CALIF.	Tel. Hillcrest 4437	Lindbergh Field
SAN FRANCISCO, CALIF.	Ticket Office, Tel. Douglas 1940, 320 Geary Street (Telephone Service 24 hours daily at Douglas 1940, San Francisco)	Municipal Airport
U. A. L. Passenger Station, Oakland Municipal Airport		Tel. Trinidad 1700
SCHENECTADY, N. Y.	American Airways, Tel. Schen. 4-3637	Municipal Airport
SEATTLE, WASH.	Glendale 1264 Ticket Office, 406 University St. (Tel. Serv. 24 Hrs. Daily) North Coast Lines' Offices in Seattle, Vancouver, B. C., Bellingham, Everett, Etc.	Tel. Elliott 3322
SPOKANE, WASH.	Tel. Lakeview 1930	Felts Field
Hotel Davenport Travel Bureau		Tel. Main 2121
SYRACUSE, N. Y.	American Airways	Tel. 6-2131
TACOMA, WASH.	Tel. Madison 787	Municipal Airport
Ticket Office, 772 Commerce St.		Tel. Broadway 1041

INDEX

FOR CLEVELAND REGION TIME TABLES

Air Connections and Supplementary Connecting Rail Services Pages 13, 14
 Air Express (Via Railway Express Agency and Co-operating Air Lines) Page 14
 Air Fares—Between All Points Served by United Air Lines... Pages 8, 9, 10
 Air-Rail Schedules... Page 12
 General Information... Page 7
 Transportation to Airports... Page 11

Numerals Below Indicate Schedule Table Number

United Air Lines complete schedules are contained in Tables 1, 2 and 3 on the opposite pages, all connecting tables are on pages 12, 13 and 14.

Table	Table	Table
Albany, N. Y.	Iowa City, Iowa	Rochester, Minn.
Bakersfield, Calif.	Kansas City, Mo.	Rock Island, Ill.
Boise, Idaho	Lindale, Ohio	Rock Springs, Wyo.
Boston, Mass.	Lincoln, Neb.	Sacramento, Calif.
Buffalo, N. Y.	Los Angeles, Calif.	St. Louis, Mo.
Cheyenne, Wyo.	Medford, Ore.	St. Paul, Minn.
Chicago, Ill.	Minneapolis, Minn.	Salt Lake City, Utah
Cleveland, O.	Moline, Ill.	San Diego, Calif.
Coffeyville, Kan.	Newark, N. J.	San Francisco, Calif.
Dallas, Texas	New Haven, Conn.	Schenectady, N. Y.
Davenport, Iowa	New York	Seattle, Wash.
Denver, Colo.	North Platte, Neb.	Spokane, Wash.
Des Moines, Iowa	Oakland, Calif.	Springfield, Mass.
Detroit, Mich.	Oklahoma City, Okla.	Syracuse, N. Y.
Elko, Nev.	Omaha, Neb.	Tacoma, Wash.
Erie, Pa.	Pasco, Wash.	Toledo, Ohio
Fort Worth, Texas	Portland, Ore.	Tulsa, Okla.
Fresno, Calif.	Reno, Nev.	Utica, N. Y.
Hartford, Conn.	Rochester, N. Y.	

Other Air-Rail and All-Air Connections

There are many time-saving air-rail and all-air combinations to off-line points which save business hours—often times an entire business day. Telephone or write our nearest office—we will be pleased to inform you of the most convenient through schedules.

Air Mail and Air Express

Air mail and express is carried on practically all schedules shown on pages 5-6. For Air Mail Information, Rates, Schedules, etc., inquire at any Post Office. For Air Express Rates, Pick-up & Special Delivery, call Ry. Express Agency.

For Accurate Information regarding all air lines which connect with United Air Lines, but are not shown in this folder on account of space limitations, refer to: **THE OFFICIAL AVIATION GUIDE**

United Air Lines schedules, etc., shown in the Official Aviation Guide, are brought up to date each month.

TICKET OFFICES (Continued)

TOLEDO, OHIO	Ticket Office, Tel. Lemoine 43	Transcontinental Airport
Ticket Office, American Air Transport, 221 Ontario St.		Tel. Main 1234
TULSA, OKLA.	Ticket Office, Tel. 6-4958	Municipal Airport
Night Reservations		Tel. 2-4216
VANCOUVER, B. C.	1927 Georgia St., Tel. Douglas 381	Boeing Aircraft of Canada
VICTORIA, B. C.	Gray Line Tours, "The Travel Bureau" 756 Yates St., Tel. Garden 4151	
WASHINGTON, D. C.	Tel. National 7070	Washington Hoover Airport
WICHITA, KAN.	Station Mgr., U. A. L., Tel. 3-2512	Municipal Airport

ALSO

New York Central Lines (Michigan Central, Boston & Albany, and Big Four Railroads) Ticket Offices in Principal Cities.
 Certain R. R. Ticket Offices of the Burlington, Chicago Great Western, North Shore Lines, Missouri Pacific, Grand Trunk and Wabash Rys. The Transportation Desk of Leading Hotels; Travel Bureaus.
 All Western Union Offices—without extra charge. Reservations may be made by telephone; W. U. messenger will deliver ticket and collect fare.

Effective January 1, 1932

UNITED AIR LINES DAILY SCHEDULES

Boeing Air Transport—National Air Transport—Pacific Air Transport—Varney Air Lines

COAST TO COAST

Table 1 New York—Cleveland—Chicago—Omaha—Denver
Salt Lake—Los Angeles—San Francisco—Portland—Seattle

Westbound—Read Down				Eastbound—Read Up						
Flight No. 9	No. 33	No. 3	"Coast to Coast Ltd." No. 1	Mls.	National Air Transport Subsidiary UNITED AIR LINES Cab Service, Page 11	Mls.	"Coast to Coast Ltd." No. 2	No. 4	No. 44	Flight No. 10
PM	PM	PM	AM		PM	PM	PM	PM	AM	AM
☆6 20	Via <i>Limousine</i> , 9 15 AM	12 15	9 15	0	Lv New York (EST) Ar Cleveland (Newark Airport)	Ar 2766	Via <i>Special Limousine</i> , 4 54	7 24	9 24	☆9 30
☆7 14	7 45	4 26	1 11	418	Lv New York (EST) Ar Cleveland (Newark Airport)	Ar 2348	1 30	4 00	6 00	☆8 30
8 33	8 58	5 39	2 24	606	Lv Cleveland (Newark Airport) Ar Toledo	Ar 2290	11 30	3 40	5 40	7 40
8 38	9 03	5 44	2 29	3	Lv Toledo Ar Chicago (Municipal Airport)	Ar 2030	12 22	2 52	4 52	6 52
9 56	10 21	7 02	3 47	736	Ar Chicago (Municipal Airport) Ar Salt Lake (Municipal Airport)	Ar 2030	9 30	12 00	2 00	4 00
AM	AM	PM	PM		AM	N'n	PM	PM	PM	PM

No. 5	No. 3	Coast to Coast Ltd. No. 1	Mls.	Boeing Air Transport Subsidiary UNITED AIR LINES Bus & Cab Schedules, Page 14	Mls.	Coast to Coast Ltd. No. 2	No. 4	No. 6
8 45 AM	12 M't	4 30 PM	736	Lv Chicago (CT) Ar Denver	2030	8 15 AM	7 15 PM	10 15 PM
☆10 50 AM	1 15 AM	6 35 PM	938	Lv Denver Ar Salt Lake	1828	☆6 00 AM	4 40 PM	☆7 50 PM
11 50 AM	3 05 AM	7 35 PM	1039	Lv Salt Lake Ar Omaha	1727	☆5 00 AM	☆3 30 PM	6 55 PM
1 01 PM	4 16 AM	8 46 PM	1169	Ar Omaha Ar Lincoln	1587	3 55 AM	2 05 PM	5 35 PM
1 31 PM	4 46 AM	9 16 PM	1217	Lv Lincoln Ar Chicago (Municipal Airport)	1549	☆2 25 AM	☆2 05 PM	5 15 PM
2 12 PM	5 27 AM	☆9 50 PM	1217	Lv Chicago (Municipal Airport) Ar Denver	1329	☆1 15 PM	☆4 45 PM	6 20 PM
4 31 PM	7 46 AM	12 11 AM	1437	Ar Denver Ar Chicago (Municipal Airport)	950	12 45 AM	11 30 AM	☆2 20 PM
5 41 PM	8 56 AM	1 21 AM	1653	Ar Chicago (Municipal Airport) Ar New York	950	8 30 AM	8 30 AM	11 30 AM

11 30 AM	2 00 AM	Via Western Air Express 01 Lv Cheyenne (MT) Ar Denver	96	9 00 PM	8 00 PM
5 25 PM	8 00 PM	01 Lv Denver (MT) Ar Cheyenne	96	3 00 AM	12 30 PM
6 25 PM	9 00 PM	96 Ar Cheyenne	96	2 00 AM	11 30 AM

No. 5	Coast to Coast Ltd. No. 1	Mls.	Varney Air Lines Subsidiary UNITED AIR LINES Bus & Cab Schedules, Page 14	Coast to Coast Ltd. No. 2	No. 6
12 45 AM	7 30 AM	0	Lv Salt Lake (MT) Ar Boise (PT)	881	5 10 PM
3 05 AM	10 05 AM	304	" " " " " "	677	1 10 PM
5 45 AM	12 50 PM	648	" " " " " "	333	10 30 AM
7 35 AM	2 45 PM	734	Ar Portland	147	8 20 AM
7 55 AM	3 40 PM	837	Lv Portland	630	8 55 PM
9 10 AM	4 45 PM	854	Ar Tacoma	27	9 30 AM
9 25 AM	5 10 PM	881	Ar Seattle	0	☆11 45 PM

12 45 AM	7 30 AM	0	Lv Salt Lake (MT) Ar Boise (PT)	881	5 10 PM
3 05 AM	10 05 AM	304	" " " " " "	677	1 10 PM
5 45 AM	12 50 PM	648	" " " " " "	333	10 30 AM
7 35 AM	2 45 PM	734	Ar Portland	147	8 20 AM
7 55 AM	3 40 PM	837	Lv Portland	630	8 55 PM
9 10 AM	4 45 PM	854	Ar Tacoma	27	9 30 AM
9 25 AM	5 10 PM	881	Ar Seattle	0	☆11 45 PM

☆—Eleven-passenger tri-motored transports. △—Mail, 2-passenger cabin planes.
 *—Using New York Central overnight trains between New York and Cleveland; United Air Lines planes between Cleveland, Chicago, Kansas City, Dallas.
 *—Stops to receive and discharge long distance passengers.
 †—Via Northbound tri-motored Pacific Air Transport plane, Trip No. 14.
 ‡—Rail fare with lower berth in Pacific night train, Seattle (9.93) or Tacoma (\$8.96) to Portland, absorbed by United Air Lines for passengers originating at Seattle or Tacoma destined to Chicago, Cleveland or New York via the "Coast to Coast Limited."
 †—Via S. P. & S. Sys. trains between Pasco and Spokane; Fare \$5.27.

AIR AND RAIL CONNECTING SCHEDULES PAGES 12-14

SOUTHWEST

Table 2 New York—Cleveland—Chicago—Moline
Kansas City—Tulsa—Oklahoma City—Ft. Worth—Dallas

Southwest—Read Down				Northeast—Read Up			
Flight No. 9	No. 1	Mls.	National Air Transport Subsidiary UNITED AIR LINES Cab Service, Page 11	Mls.	No. 2	No. 10	
☆6 20 PM	Via <i>Limousine</i> 9 15 AM	0	Lv New York (EST) Ar New York (Newark Airport)	1701	Via <i>Limousine</i> 4 54 PM	☆9 30 AM	
7 40 AM	1 31 PM	418	" " " " " "	1283	1 10 PM	7 40 PM	
8 38 AM	2 29 PM	506	" " " " " "	1195	12 22 PM	6 52 PM	
9 56 AM	3 47 PM	736	Ar Chicago (Municipal Airport) Ar Tulsa	965	9 30 AM	4 00 PM	
No. 9	No. 1	Mls.	UNITED AIR LINES	Mls.	No. 8	No. 10	
10 15 AM	4 00 PM	736	Lv Chicago (Mun. Air.) (CT) Ar Moline-Davenport	965	6 25 PM	3 45 PM	
11 10 AM	5 25 PM	888	Ar Moline-Davenport	813	5 10 PM	2 30 PM	
11 55 AM	5 40 PM	1163	Lv Tulsa Ar Kansas City	813	1 45 PM	12 15 PM	
2 15 PM	8 15 PM	1163	Ar Kansas City Ar Tulsa	813	2 40 PM	12 N'n	
2 30 PM	+10 to 11 PM	0	Lv Kansas City Ar Tulsa	538	2 25 PM	4 7 45 AM	
3 55 PM	+ 2 30 AM	0	Ar Tulsa Ar Tulsa	538	1 05 PM	4 11 40 PM	
4 35 PM	+ 7 36 AM	1489	Ar Tulsa Ar Tulsa	321	12 18 PM	4 11 40 PM	
4 40 PM	+ 7 36 AM	1489	Ar Tulsa Ar Tulsa	321	12 18 PM	4 11 40 PM	
5 40 PM	+ 7 36 AM	1489	Ar Tulsa Ar Tulsa	321	12 18 PM	4 11 40 PM	
5 55 PM	+ 7 36 AM	1489	Ar Tulsa Ar Tulsa	321	12 18 PM	4 11 40 PM	
7 53 PM	+ 12 40 PM	1671	Ar Tulsa Ar Tulsa	30	9 50 AM	4 5 35 PM	
7 58 PM	+ 12 40 PM	1671	Ar Tulsa Ar Tulsa	30	9 50 AM	4 5 35 PM	
8 18 PM	+ 12 25 PM	1701	Ar Tulsa Ar Tulsa	30	9 30 AM	4 5 35 PM	

☆—Eleven-passenger tri-motored transports. †—See note under table 1.
 ‡—Passenger will be picked up if reservation is made and accepted in advance.
 †—Through passengers stop overnight at Chicago. Additional eastbound planes leave Chicago at 12 Noon, 2 PM, and 4 PM. See Table 1.
 ‡—Moline stop also serves Davenport, Ia., and Rock Island, Ill.
 †—Via night trains from Kansas City. ‡—Via night trains to Kansas City.

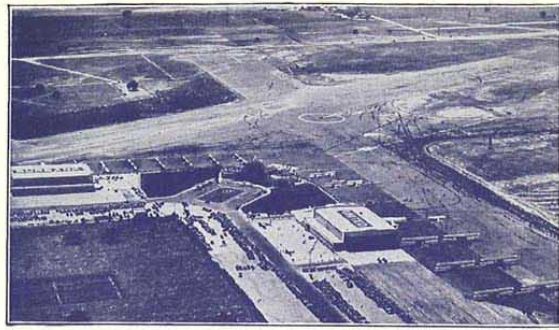
PACIFIC COAST

Table 3 Seattle—Tacoma—Portland—San Francisco
Oakland—Los Angeles—San Diego

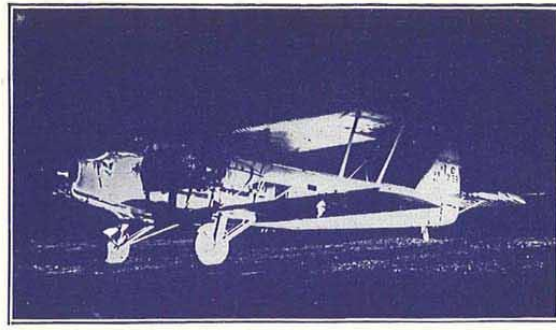
Southbound—Read Down				Northbound—Read Up			
No. 17	No. 15	Mls.	Pacific Air Transport Subsidiary UNITED AIR LINES Cab Service, Page 11	Mls.	No. 14	No. 16	
6 45 PM	8 30 AM	0	Lv Seattle (PT) Ar Tacoma	1206	7 10 PM	11 00 AM	
7 05 PM	8 55 AM	27	" " " " " "	1179	6 45 PM	10 30 AM	
8 15 PM	10 00 AM	147	Ar Portland	1050	5 40 PM	9 20 AM	
8 30 PM	10 15 AM	177	Lv Portland	1050	5 25 PM	9 05 AM	
10 50 PM	12 20 PM	390	Ar Medford	816	3 20 PM	7 00 AM	
2 10 AM	12 40 PM	460	Lv Medford	816	3 00 PM	6 45 AM	
2 50 AM	3 35 PM	733	Ar San Francisco	473	12 05 PM	3 45 AM	
3 50 AM	4 35 PM	833	Lv San Francisco	473	11 50 AM		



The well-proportioned spacious cabin provides plenty of "leg room". The cabins are sound-proofed and have forced ventilation and heating as well as many other modern comfort features.



Excellent depots and depot-hangars add to the enjoyment of flights on United Air Lines—a view of United Airport, Burbank, Los Angeles County, Calif. United operates 35 deluxe tri-motor transports incorporating the latest features of design and construction on Coastal and Transcontinental schedules serving Los Angeles.



Night flying is commonplace. United Air Lines planes fly more than five million miles at night annually over 6119 miles of completely improved airways with frequent illuminated auxiliary landing fields and government maintained airway beacons and blinkers. Every proved aid to aerial navigation is employed.



Powered by the reliable P & W "Wasp" and "Hornet" engines, United's fleet of 100 late-type planes fly 35,000 miles daily for a total of 12,000,000 miles annually serving 42 cities in 18 states.

GENERAL INFORMATION

RESERVATIONS—Must be made and accepted in advance.
TICKETS—On sale at all company offices and by agencies shown on pages 5 and 6.
FARES—There are no half-fares. Infants under two years of age may be carried free. Minors must have written permit from parents or legal guardian.
ROUND TRIP FARES—10% reduction allowed on all United Air Lines round trip tickets. Return coupon is not transferable and must be used within 30 days from date of issue. It is not valid unless advance reservation is made and confirmed for the return trip.

REFUNDS—If weather or other conditions prevent completion of flight, a refund draft covering the complete unused portion of the air fare will be issued immediately. These drafts may be cashed at all points along the line.

CANCELLATIONS - BY COMPANY—Company reserves the right to cancel bookings before passage or en route any time such action is deemed advisable or necessary. In all events, the passenger's sole recourse shall be the recovery of the unused portion of the air fare.

CANCELLATIONS - BY PASSENGER—To secure refund, ticket must be surrendered to company office two hours before scheduled departure of plane.

CANCELLATION LIMITS—Reservations are subject to cancellation if ticket is not purchased two hours before scheduled departure of plane *except in special cases* where an earlier cancellation limit applies as indicated herewith. In the latter case (where ticket is purchased several hours in advance to protect reservation) the company will make full refund if cancellation by passenger becomes necessary providing ticket is surrendered not less than two hours before scheduled departure of plane.

SPECIAL CANCELLATION LIMITS			
Trip No.	New York	Cleveland	Chicago
1 West	* 4 00 PM	10 30 AM	10 00 AM
2 Southwest			* 4 00 PM
3 East	* 4 00 PM	12 Noon	
4 West			* 4 00 PM
5 East	(* Previous Day)	* 2 00 PM	* 9 00 PM
6 West			* 2 00 PM
9 So. West		* 9 00 PM	

STOP OVERTS—Permitted on both one way and round trip air tickets at any regularly scheduled landing field provided arrangements are made before starting trip. Passenger assumes responsibility for securing reservation to resume journey.

CAB SERVICE—At passenger's expense; special low fares apply from business district to airport. See page 11.

BAGGAGE—30 pounds carried free on each full fare ticket; charge of 1/2 of 1% of fare applies on excess up to 50 pounds. Baggage weighing over 50 pounds carried only by special arrangement.

RESPONSIBILITY FOR CONNECTIONS—United Air Lines and subsidiaries cannot be responsible for errors in these time tables nor for inconvenience resulting from delayed planes or trains, or failure to make connections.

TRAVELERS' INSURANCE—At request of passenger, company representatives will issue, as agents of the Travelers Insurance Co., a \$5,000 policy which is in force during the flight up to 24 hours for \$2.00.

SCHEDULES AND FARES—Published in these time tables, effective January 1, 1932, are subject to change without notice.



Complimentary meals served afloat on all United Air Lines planes in flight at meal time

UNITED AIR LINES PASSENGER FARES

10% Reduction On All Round Trips Effective January 1, 1932

On Line Points Listed Alphabetically	Bakersfield	Boise	Cheyenne	Chicago	Cleveland	Coffeyville	Dallas	Des Moines	Elko	Fort Worth	Fresno	Iowa City	Kansas City	Lincoln	Los Angeles	Medford	Moline	Davenport	Rock Island	New York	North Platte	Oakland	Oklahoma City	Omaha	Pasco	Portland	Reno	Rock Springs	Sacramento	Salt Lake City	San Diego	San Francisco	Seattle	Spokane	Tacoma	Toledo	Tulsa		
Bakersfield, Calif.																																							
Boise, Idaho																																							
Cheyenne, Wyo.																																							
Chicago, Ill.																																							
Cleveland, Ohio																																							
Coffeyville, Kan.																																							
Dallas, Tex.																																							
Des Moines, Iowa																																							
Elko, Nev.																																							
Fort Worth, Tex.																																							
Fresno, Calif.																																							
Iowa City, Iowa																																							
Kansas City, Mo.																																							
Lincoln, Neb.																																							
Los Angeles, Calif.																																							
Medford, Ore.																																							
Moline, Ill.																																							
New York, N. Y.																																							
North Platte, Neb.																																							
Oakland, Calif.																																							
Oklahoma City, Okla.																																							
Omaha, Neb.																																							
Pasco, Wash.																																							
Portland, Ore.																																							
Reno, Nev.																																							
Rock Springs, Wyo.																																							
Sacramento, Calif.																																							
Salt Lake City, Utah																																							
San Diego, Calif.																																							
San Francisco, Calif.																																							
Seattle, Wash.																																							
Spokane, Wash.																																							
Tacoma, Wash.																																							
Toledo, Ohio																																							
Tulsa, Okla.																																							

Fares Are from Airport to Airport—Special cab rates between airport and business district usually not exceeding 75c per passenger have been arranged at all points on United Air Lines. See page 11.

Through fares between points on different divisions of United Air Lines are based on the lowest combination of fares via routings over United Air Lines, with two exceptions:

- Fares between Kansas City (and points South thereof) and Omaha (and points West thereof) include \$12 fare via American Airways between Kansas City and Omaha.
- Fares between San Diego—Los Angeles and Salt Lake City (and points East thereof) include fare via Western Air Express between Los Angeles and Salt Lake City. The same is true of San Diego—Los Angeles and Boise.

