

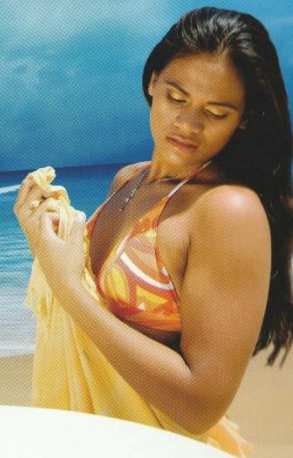
Our Office Contacts:

Head Office
Nauru International Airport
PO Box 40
Republic of Nauru

Postal Address
PO Box 10355
Adelaide Street
Brisbane QLD 4000

Main Office
Level 3,
99 Creek Street
Brisbane QLD 4000
Phone: +61 7 3229 6455
Fax: +61 7 3229 6344

When service matters most... fly with us




Our Airline 

Our Airline 

Airline of the Pacific

ABOUT US

 Our Airline is the National Airline of Nauru, located in the Central Pacific. The airline has been serving the needs of the people of the Pacific for over thirty years, connecting the tiny Nations with Australia and other Countries.

In 1996 the company went through a transformation. Firstly it became a State Owned Corporation established to operate under the commercial principles. Secondly the principal place of business was established in Australia and the airlines operation has been brought under the Australian Standards with safety oversight provided by the Civil Aviation Authority of Australia. What this means for our customers and owners is, we have a first world airline with highest standards in safety, security, aircraft maintenance and training for our pilots, cabin and ground crew.




Our Team of sixty three people are here to serve you - our customers and business partners. The Team consists Australians and Nauruans based in Brisbane, Melbourne, Norfolk Island and Nauru.

Nauruan people are well known for their hospitality. When you join us on one of our flights you will enjoy our hospitality and a service that is uniquely Pacific.

Our Airline 

OUR DESTINATIONS

 Our Airline exists to serve the interests of Nauru and its people. We operate from Brisbane via Solomon Islands and from Fiji via Kiribati to Nauru.



We also operate on behalf of our partners:

Norfolk Air from Brisbane, Newcastle, Sydney and Melbourne to Norfolk Island. Qantas code shares (sells some seats to its customers) on these flights

Air Kiribati from Tarawa, Kiribati to Nadi, Fiji

Pacific Wings destinations to be determined soon by the new start-up Australian airline, focus will be from Australian Cities to the Pacific Islands and unserved Cities in New Zealand.

We also operate **charters** for the Australian Government and various airlines and corporations.



OUR SERVICES

Our Airline offers International airline services and to better meet our customers requirements we offer:

Business and economy class service with hot meals and bar service at no extra cost

Different fare products to suit different customers

Freight space for shippers

Excess baggage for customers who need more baggage space than our already very generous baggage allowances

We manage bookings for group sizes of ten or more with special terms and conditions

We also manage exclusive flights for up-to 130 people to destinations within Australia, New Zealand, Pacific Islands and South East Asia

We use one of the most popular aircrafts ever built the Boeing 737-300. The maintenance on these aircrafts is conducted by highly respected Australian companies and pilot training by Qantas, We have two of these B737 aircrafts in our fleet which provides us greater flexibility to operate our schedules in the event of aircraft defects.



OUR FARES

Our Fares have been designed to suit your needs.

If you are travelling for business purposes and your itinerary may change we recommend you purchase our business fares.

Business class this is our premium product, with business class seats, extra leg room and world class catering. We also allow the customers to check-in with up-to 35 kilograms of luggage.

Full Economy is the most flexible of our economy fares and comes with 25 kilograms of checked luggage.

Our Pacific saver and sale fares are designed for customers who are happy to trade flexibility with value pricing. Customers can check-in up-to 23 kilograms of luggage and enjoy hot meal and full bar service on board.

Fare Types	Sale Fare	Pacific Saver	Flexi Saver	Fully Flexible	Business Class
Transferable	No	No	No	Yes (by name change)	Yes (by name change)
Name change permitted	No	No	No	Yes	Yes
Flight changes permitted	At least 24 hrs before scheduled departure	At least 24 hrs before scheduled departure	At least 3 hours prior scheduled departure via our Call Centre	Yes	Yes
Flight change fees via Call Centre	\$55 plus any fare difference	\$55 plus any fare difference	Any fare difference	Any fare difference	Any fare difference
Children 2 to 11 years	75% of adult fare	75% of adult fare	75% of adult fare	75% of adult fare	75% of adult fare
Infants under 2 years (if not occupying a seat)	Nil fare	Nil fare	Nil fare	Nil fare	Nil fare
Refundable	No	No	No	Yes, at a fee of \$55	Yes, at a fee of \$55
Checked Baggage	23kg allowance included	23kg allowance included	25kg allowance included	25kg allowance included	35kg allowance included

Our Airline 

OUR TIMETABLE

Our Airline 

 **AIR KIRIBATI**

Northern Summer 2010 Schedules effective from 28 March to 30 October 2010

From	To	Depart	Arrive	Stops	Frequency	Effective
Fiji - Kiribati - Fiji						
Nadi	Tarawa	8:00	11:00	0	Mon	From 28 March
		8:00	11:00	0	Wed	From 1 May
		12:00	15:00	0	Mon	From 13 June
		8:00	11:00	0	Wed	From 1 Sept
		9:00	11:00	0	Wed	From 24 Oct
Tarawa	Nadi	11:50	14:50	0	Sat	From 28 March
		8:00	11:00	0	Mon	From 1 May
		8:00	12:00	0	Mon	From 24 Oct
Nauru - Australia - Nauru						
Nauru	Brisbane	14:15	18:05	1	Mon	From 28 March
		14:15	18:05	1	Wed	From 1 May
		18:15	22:05	1	Mon	From 13 June
		14:15	18:05	1	Wed	From 1 Sept
Brisbane	Nauru	1:00	8:35	1	Sat	From 28 March
		21:00	4:35 (Mon)	1	Sun	From 1 May
Kiribati - Solomon Islands - Kiribati						
Tarawa	Honiara	12:00	15:05	1	Mon	From 28 March
		12:00	15:05	1	Wed	From 1 May
		16:00	19:05	1	Mon	From 13 June
		12:00	15:05	1	Wed	From 1 Sept
Honiara	Tarawa	5:45	10:50	1	Sat	From 28 March
		1:45	7:00	1	Mon	From 1 May
Solomon Islands - Nauru - Solomon Islands						
Nauru	Honiara	14:15	15:05	0	Mon	From 28 March
		14:15	15:05	0	Wed	From 1 May
		18:15	19:05	0	Mon	From 13 June
		14:15	15:05	0	Wed	From 1 Sept
Honiara	Nauru	5:45	8:35	0	Sat	From 28 March
		1:45	4:35	0	Mon	From 1 May

*subject to change without notice. For the latest information please visit www.ourairline.com.au

OUR TIMETABLE

Our Airline 

 **AIR KIRIBATI**

Northern Summer 2010 Schedules effective from 28 March to 30 October 2010

From	To	Depart	Arrive	Stops	Frequency	Effective
Fiji - Nauru - Fiji						
Nadi	Nauru	8:00	13:15	1	Mon	From 28 March
		8:00	13:15	1	Wed	From 1 May
		12:00	17:15	1	Mon	From 13 June
		8:00	13:15	1	Wed	From 1 Sept
Nauru	Nadi	9:00	13:15	1	Wed	From 24 Oct
		9:35	14:50	1	Sat	From 28 March
		5:45	11:00	1	Mon	From 1 May
		5:45	12:00	1	Mon	From 24 Oct
Nauru - Kiribati - Nauru						
Tarawa	Nauru	12:00	13:15	0	Mon	From 28 March
		12:00	13:15	0	Wed	From 1 May
		16:00	17:15	0	Mon	From 13 June
		12:00	13:15	0	Wed	From 1 Sept
Nauru	Tarawa	9:35	10:50	0	Sat	From 28 March
		5:45	7:00	0	Mon	From 1 May
Kiribati - Australia - Kiribati						
Tarawa	Brisbane	12:00	18:05	2	Mon	From 28 March
		12:00	18:05	2	Wed	From 1 May
		16:00	22:05	2	Mon	From 13 June
		12:00	15:05	2	Wed	From 1 Sept
Brisbane	Tarawa	1:00	10:50	2	Sat	From 28 March
		21:00	7:00 (Mon)	2	Sun	From 1 May
Solomon Islands - Australia - Solomon Islands						
Honiara	Brisbane	15:50	18:05	0	Mon	From 28 March
		15:50	18:05	0	Wed	From 1 May
		19:50	22:05	0	Mon	From 13 June
		15:50	18:05	0	Wed	From 1 Sept
Brisbane	Honiara	1:00	5:00	0	Sat	From 28 March
		21:00	1:00 (Mon)	0	Sun	From 1 May

*subject to change without notice. For the latest information please visit www.ourairline.com.au

HOW TO BOOK OUR AIRLINE

 **Online:**
www.ourairline.com.au
www.airkiribati.com.au



Our Call Centre or General Sales Agencies:

Australia-wide	Ph: 1300 369 044	Fax: +61 7 3229 6344	E-mail: reservations@ourairline.com.au
Fiji (Suva and Nadi)	Ph: 331 5311 or 330 4655 or 310 0087 or 670 8157 Mob: +9238935 (24/7)	Fax: 330 8687	E-mail: radhika@oneworldflight.com.fj oneworldflight@connect.com.fj
Kiribati	Ph: +21550	Fax: 21549 or 21188	E-mail: OurAirline.Sales@gmail.com AirKiribati.Sales@gmail.com
Nauru	Ph: 444 3746 or 557 7000	Fax: 444 3746	E-mail: naurusales@ourairline.com.nr
Solomon Islands	Ph: 22586	Fax: 26184	E-mail: kevin@gts.com.sb nasaleta@gts.com.sb Mayo@gts.com.sb

Via travel agents in the various Countries

We issue electronic tickets which at the same time work as itineraries. You are not required to reconfirm your bookings with us once the ticket has been issued unless you would like to make changes to your bookings. Payments can be made by credit card (online and telephone) or in cash at the various Travel Centres or travel agents.

Our Airline 