

**EXPERIENCE COUNTS**

*A Million Miles  
Without An Accident*



*Associated with*  
**NORTHERN PACIFIC  
GREAT NORTHERN  
CHICAGO, MILWAUKEE,  
ST. PAUL & PACIFIC  
PENNSYLVANIA RAILROAD  
BALTIMORE & OHIO  
NEW YORK CENTRAL LINES**

**EXPERIENCE COUNTS**

*A Million Miles  
Without An Accident*



*Associated with*  
**NORTHERN PACIFIC  
GREAT NORTHERN  
CHICAGO, MILWAUKEE,  
ST. PAUL & PACIFIC  
PENNSYLVANIA RAILROAD  
BALTIMORE & OHIO  
NEW YORK CENTRAL LINES**

**SPEED -- COMFORT -- CONVENIENCE**



*Fleet of Northwest Airways Hamilton planes "on the line" awaiting to take off*

## In the Northwest it's **THE NORTHWEST AIRWAYS**

THE pioneer air line of the Northwest—in continuous operation since October 1, 1926. A complete air transportation service, operating two services daily between Chicago and the Twin Cities, carrying passengers, mail and express.

Flying activities under the direction of a technical committee, headed by Col. Charles A. Lindbergh.

Associated in the first co-ordinated air-rail service in the history of transportation with the Northern Pacific, Great Northern, Chicago, Milwaukee, St. Paul & Pacific, Pennsylvania System, Baltimore & Ohio, and New York Central Lines. This service in actual daily operation since September 1, 1928. Air jump of 3 hours 30 minutes between Chicago and the Twin Cities (12 hours by rail) is synchronized with the fast trains arriving over associated railroads at either terminal so that passengers are enabled to "save a day" in travel time across the continent.

Route is developed by United States Department of Commerce—equipped with chain of landing fields every 30 miles and beacon lights of two and one-half million candle power every 10 miles—all lights are kept burning from sundown to sunrise—Meteriological Balloon Station at St. Paul—Aviation Radio Station at La Crosse—pilots supplied with special reports on weather conditions "just ahead" on every trip.

Has flown more than a million miles (March 31, 1929) without an accident. Has never injured a passenger, scratched a pilot, or "washed out" a ship. Has lowest insurance rate of any air line in the United States. Carries \$20,000 liability insurance on every passenger.

For two and a half years has maintained an average schedule efficiency of 96 per cent.

**VETERAN EXPERIENCE**

## **NORTHWEST AIRWAYS, INC.**

**Air Mail -- Passenger Service  
Air Express**

**SAINT PAUL**  
*Executive Offices*  
Merchants Bank Bldg.  
Cedar 5693

**MINNEAPOLIS**  
*Operating Offices*  
Wold-Chamberlain Airport  
Dupont 4881

<b>CHICAGO</b>	
"Loop Office," 21 Palmer House Arcade . . . . .	State 7111
Airport Office, 5108 W. 63d St. . . . .	Hemlock 0017
<b>MILWAUKEE</b>	
Airport Office, Milwaukee County Airport . . . . .	Cudahy 436
<b>MADISON</b>	
Airport Office, Pennco Field . . . . .	Fairchild 6424
<b>LA CROSSE</b>	
Airport Office, Salzer Field . . . . .	La Crosse 6-68
Post Office . . . . .	La Crosse 41
<b>ROCHESTER</b>	
Airport Office . . . . .	Rochester 2263
Downtown Office, Kahler Hotel . . . . .	Rochester 3381
<b>SAINT PAUL</b>	
Operating Office . . . . .	Nestor 1868
<b>MINNEAPOLIS</b>	
Airport Office, Wold-Chamberlain Airport . . . . .	Dupont 4881
<b>FOND DU LAC</b>	
Chamber of Commerce . . . . .	Fond du Lac 1614
Airport Office . . . . .	Fond du Lac 935
<b>OSHKOSH</b>	
Chamber of Commerce . . . . .	Oshkosh 108
Airport Office . . . . .	Oshkosh 1511
<b>APPLETON</b>	
Chamber of Commerce . . . . .	Appleton 2701
Airport Office . . . . .	Neenah 185
<b>GREEN BAY</b>	
Chamber of Commerce . . . . .	Adams 4705
Airport Office—9.00 a.m. to 4.30 p.m. . . . .	Adams 398
After hours . . . . .	Howard 344

Northwest Airways tickets are on sale at all offices of the following railroads, associated with it in the first co-ordinated air-rail service in the history of transportation:

**NORTHERN PACIFIC  
GREAT NORTHERN  
CHICAGO, MILWAUKEE, ST. PAUL & PACIFIC  
PENNSYLVANIA RAILROAD  
BALTIMORE & OHIO  
NEW YORK CENTRAL LINES**

*Leading travel bureaus and the better hotels throughout the country will furnish travelers with Northwest Airways information, and sell transportation or arrange reservations over the line.*

**FIRST COMBINED PLANE AND TRAIN**



*A graphic impression of Air-Rail Service.*

**AIR TAXI SERVICE AND SPECIAL CHARTERED FLIGHTS**—The Northwest Airways will send its planes, manned by experienced air mail pilots, to any point on the North American continent. Available for this service is a fleet of modern planes accommodating from one to fourteen passengers.

*For further particulars, telephone, wire or write  
Office Manager, Northwest Airways, Inc.  
Saint Paul, Minnesota*



**SHORT SIGHTSEEING FLIGHTS**—The Northwest Airways holds in readiness at its Minneapolis hangar on the Wold-Chamberlain Field a fleet of modern planes, manned by veteran air mail pilots, for short sightseeing flights over the Twin Cities and environs. This service is available every day during daylight hours. Reservations are unnecessary.



**FLYING INSTRUCTION**—The Northwest Airways offers a course in flying to a limited number of students. Instruction is given by expert air mail pilots.

*For further information, telephone, wire or write  
Office Manager, Northwest Airways, Inc.  
Saint Paul, Minnesota*

**Lowest Insurance Rate in the United States**

“DUE to the remarkable record of Northwest Airways, we have been able to obtain from the aviation underwriters what we believe to be the lowest passenger liability insurance rate accorded any flying organization in the United States.”

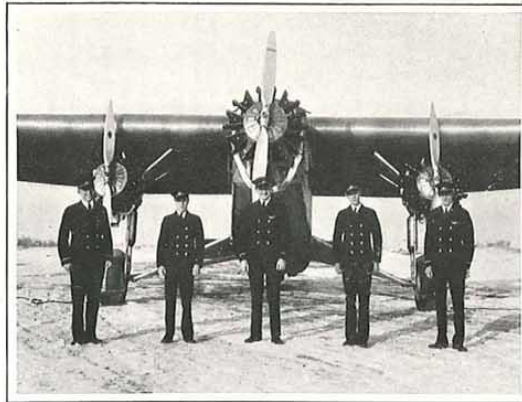
—Excerpt from letter dated July 25, 1928, from  
Wm. B. Joyce & Co., General Insurance Agents,  
94 East Fourth Street,  
Saint Paul

**Officers and Directors of  
NORTHWEST AIRWAYS, INC.**

- HAROLD H. EMMONS . . . . . President  
Detroit, Michigan
- COL. L. H. BRITTIN . . . . . Vice President and General Manager  
St. Paul, Minnesota
- FRANK W. BLAIR . . . . . Vice President  
President, Union Trust Co., Detroit, Michigan
- W. B. STOUT . . . . . Secretary  
President, Stout Air Services, Inc., Detroit, Michigan
- EUGENE W. LEWIS . . . . . Treasurer  
President, Industrial Bank, Detroit, Michigan
- C. E. JOHNSON . . . . . Assistant Treasurer  
Vice President, Empire National Bank, St. Paul, Minnesota
- W. B. MAYO . . . . . Director  
Chief Engineer, Ford Motor Co., Detroit, Michigan
- E. S. EVANS . . . . . Director  
President, Evans Auto Loading Co., Detroit, Michigan
- R. C. LILLY . . . . . Director  
President, Merchants National Bank, St. Paul, Minnesota
- EARLE H. REYNOLDS . . . . . Director  
President, Peoples Trust & Savings Bank, Chicago, Illinois
- JULE M. HANNAFORD, JR. . . . . Director  
Vice President, Gordon & Ferguson, St. Paul, Minnesota
- COL. PAUL HENDERSON . . . . . Director  
Vice President, National Air Transport, Inc., Chicago, Illinois



- CHARLES W. HOLMAN . . . . . Operating Manager
- MARTIN P. KELLY . . . . . Traffic Manager
- GEORGE O. MILES . . . . . Office Manager
- CHADWICK B. SMITH . . . . . Chief Pilot
- ANDREW J. HUFFORD . . . . . Chief Motor Mechanic
- J. B. LA MONT . . . . . Chief Ship Mechanic



Close-up of a group of Northwest Airways pilots and stewards in front of the three 410 horse power engines which make for maximum safety on the Ford all-metal cabin monoplanes.

**General Information**

**Reservations and Cancellations.** The Northwest Airways, Inc. will undertake to arrange reservations on telegraphic confirmation through any branch office of Associated Railroads, Travel Bureaus, and leading hotels, and through our own agents as listed on page two of this folder. The Company reserves the right to require a reasonable deposit where the exigency of travel demands.

To definitely insure accommodations, tickets should be purchased in advance. Cancellations will be accepted and full refund made on telegraphic notice if received six hours before the departure of the plane.

**Refunds.** If for any reason air planes are not operated on days specified on ticket, refunds will be made. All refunds are made through Office Manager, Northwest Airways, Inc., St. Paul, Minn.

**Baggage.** Thirty pounds of baggage will be transported on airplane free of charge. Any baggage in excess of this amount will be charged for at the rate of 25 cents per pound. The right is reserved to limit baggage to 50 pounds per passenger. Trunks and extra baggage may be transported by special fast express or rail between terminals at tariff rates. Animals will not be transported.

**Tips, Etc.** No gratuities of any kind are accepted by any employee of Northwest Airways, Inc. We feel that tips have no place in American commercial aviation.

**Children's Fares.** Children under three years of age will be carried free if held on lap of parent or guardian. Children occupying seats, or children over three years of age will be required to pay full fare.



Interior of 14-passenger Ford air liner, standard equipment of Northwest Airways Service.

**General Information—Continued**

**Transportation to and from Airports (West-bound).** Passengers en route to the Twin Cities via air will be transported by Yellow cabs from any point in the Englewood or downtown district in Chicago to the Northwest Airways Station at the Municipal Airport, 5108 West 63d Street, upon presentation to cab driver of the transfer coupon attached to their airways ticket. A similar procedure is gone through with the remaining portion of the ticket upon arrival at the Saint Paul or Minneapolis airports, where Yellow Cabs will be waiting to transport passengers to the respective downtown districts or railway stations.

**(Eastbound.)** Passengers en route from the Twin Cities via air to Chicago are transported to and from airports in the same manner as in westbound travel.

**Taxi-fare on Tickets Purchased at Airports.** When tickets are bought at terminal airports, taxi charge from business district or railroad station to airport will be refunded to passenger on presentation of taxicab receipt or the taxi driver will be paid direct by the Airways representative at the airport.

**Correspondence.** For additional information relative to the operation and service of the Northwest Airways, Inc., telephone, write or wire: Office Manager, Northwest Airways, Inc., St. Paul, Minn.

**FLY 3 HOURS AND "SAVE A DAY"**



One of the Hamilton super-powered air cruisers of the Northwest Airways fleet

**General Information—Continued**

**Liability.** No responsibility or liability beyond its own respective line is assumed by Northwest Airways, Inc., nor will it be liable for inconvenience or damage due to delayed airplanes or trains, or for failure to make connections. Schedules, fares, and equipment are subject to change without notice.

**Steward Service.** Uniformed stewards, trained especially to care for the comfort of passengers, are in attendance on the Chicago-Rochester-Twin Cities route. They will handle baggage, arrange for the sending of telegrams and complete details for air-rail connections. Ask them for any information desired.

**Equipment.** The equipment of the Northwest Airways, Inc., ships, motors, and instruments are modern in all respects and maintained at all times in strictly first-class condition. United States Air Mail is carried on all regular scheduled flights in a special compartment, apart from the passengers. Operations are carried on in conformity with the high standard of the Post Office Department.



This insignia identifies Airmail Pilots

**SCHEDULES - FARES - EQUIPMENT**

**CHICAGO - - ROCHESTER - - TWIN CITIES**

Daily Westbound	Miles	"The Gray Eagle"		Daily Eastbound
3.00 p.m.	0	Lv. ....	Chicago .....	Ar 12.55 p.m.
6.00 p.m.	285	Lv. ....	Rochester, Minn. ....	Lv 10.05 a.m.
6.40 p.m.	355	Ar. ....	St. Paul .....	Lv 9.15 a.m.
6.55 p.m.	365	Ar. ....	Minneapolis .....	Lv 9.00 a.m.

**EQUIPMENT:** Ford all-metal, tri-motored cabin monoplanes. Heated. Capacity, 14 passengers, pilot and steward. Smoking compartment, baggage and toilet facilities. Powered with three 410 H. P. "Wasp" motors. Flares and landing lights. Refreshments served en route. Steward Service. Weather bureau reports.

Passenger Fares Between	Chicago	Rochester	St. Paul	Minneapolis
Chicago .....	.....	\$28.00	\$30.00	\$30.00
Rochester .....	\$28.00	.....	10.00	10.00
St. Paul .....	30.00	10.00	.....	5.00
Minneapolis .....	30.00	10.00	5.00	.....

**NOTE:** \$30.00 fare includes transportation to and from airports at Chicago and St. Paul or Minneapolis. Round-trip fare between Chicago and St. Paul or Minneapolis or Rochester, \$50; stop-over privilege of thirty days.

**CHICAGO - - MILWAUKEE - - TWIN CITIES**

Daily Westbound	Miles	"The Silver Streak"		Daily Eastbound
6.10 a.m.	0	Lv. ....	Chicago .....	Ar 7.25 p.m.
7.00 a.m.	85	Ar. ....	Milwaukee .....	Lv 6.35 p.m.
7.10 a.m.	85	Lv. ....	Milwaukee .....	Ar 6.25 p.m.
8.05 a.m.	160	Lv. ....	Madison .....	Lv 5.40 p.m.
9.20 a.m.	270	Lv. ....	La Crosse .....	Lv 4.25 p.m.
10.40 a.m.	390	Lv. ....	St. Paul .....	Lv 3.05 p.m.
10.50 a.m.	400	Ar. ....	Minneapolis .....	Lv 2.45 p.m.

**EQUIPMENT:** Hamilton super-powered, all-metal cabin monoplanes. Heated. Capacity, 7 passengers and pilot. Baggage and toilet facilities. Powered with 550 H. P. "Hornet" motor. Flares and landing lights. Weather bureau reports en route.

Passenger Fares Between	Chicago	Milwaukee	Madison	La Crosse	St. Paul	Minneapolis
Chicago .....	.....	\$10.00	\$17.00	\$27.00	\$30.00	\$30.00
Milwaukee .....	\$10.00	.....	8.50	19.50	26.50	26.50
Madison .....	17.00	8.50	.....	11.00	23.00	23.00
La Crosse .....	27.00	19.50	11.00	.....	12.00	12.00
St. Paul .....	30.00	26.50	23.00	12.00	.....	5.00
Minneapolis .....	30.00	26.50	23.00	12.00	5.00	.....

**NOTE:** \$30.00 fare includes transportation to and from airports at Chicago and St. Paul or Minneapolis. Round-trip fare between Chicago or Milwaukee and St. Paul or Minneapolis, \$50; stop-over privilege of thirty days.

**CHICAGO - - MILWAUKEE - - GREEN BAY**

Daily Northbound	Miles	"The Black Bird"				Daily Southbound
6.10 a.m.	0	Lv. ....	Chicago .....	Ar	7.25 p.m.	
7.00 a.m.	85	Ar. ....	Milwaukee .....	Lv	6.35 p.m.	
7.30 a.m.	85	Lv. ....	Milwaukee .....	Ar	6.05 p.m.	
8.10 a.m.	150	Lv. ....	Fond du Lac .....	Lv	5.20 p.m.	
8.25 a.m.	165	Lv. ....	Oshkosh .....	Lv	5.05 p.m.	
8.40 a.m.	185	Lv. ....	Appleton-Neenah-Menasha .....	Lv	4.50 p.m.	
9.00 a.m.	210	Ar. ....	Green Bay .....	Lv	4.30 p.m.	

**EQUIPMENT:** Stinson-Detroiter cabin planes. Heated. Capacity, 3 passengers and pilot. Wright Whirlwind 200 H. P. motor, the engine made famous by the Lindbergh trans-Atlantic flight. Flares and landing lights. Weather bureau reports en route.

Passenger Fares Between	Chicago	Milwaukee	Fond du Lac	Oshkosh	Appleton-Neenah-Menasha	Green Bay
Chicago .....	.....	\$10.00	\$17.00	\$18.00	\$19.00	\$20.00
Milwaukee .....	\$10.00	.....	12.00	13.00	14.00	15.00
Fond du Lac .....	17.00	12.00	.....	5.00	7.50	10.00
Oshkosh .....	18.00	13.00	5.00	.....	5.00	7.50
Appleton-Neenah-Menasha .....	19.00	14.00	7.50	5.00	.....	5.00
Green Bay .....	20.00	15.00	10.00	7.50	5.00	.....

All schedules, fares and equipment subject to change without notice.