

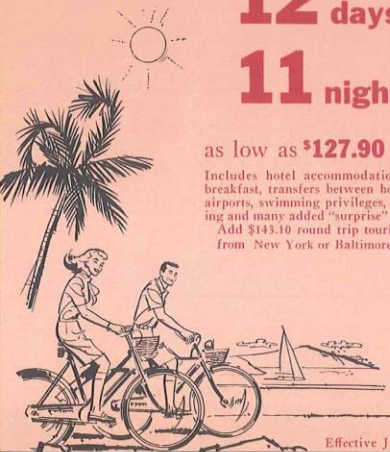
# TWO ON THE ISLES

## BERMUDA & NASSAU

**12** days  
**11** nights

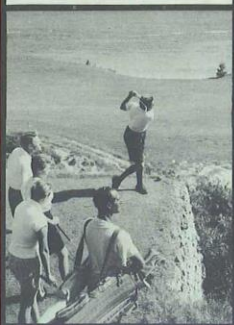
as low as **\$127.90**

Includes hotel accommodations with breakfast, transfers between hotels and airports, swimming privileges, sightseeing and many added "surprise" features. Add \$143.10 round trip tourist fare from New York or Baltimore



Effective July 1st

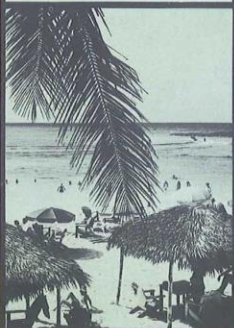
wonderful golfing



unlimited sightseeing



magnificent beaches



traditional courtesy



### FLY THE BRITISH WAY TO YOUR BRITISH HOLIDAY



Enjoy a foretaste of the fun and vacation pleasure that awaits you in both Bermuda and Nassau the very moment you board your Eagle flight. Enjoy every extra you'd expect from traditional superior British hospitality . . . service as smooth as the flight . . . and a welcome as warm as the islands' sun.

**LEAVE THE HEAT** of the city for ocean breeze-swept enchanting islands, with air conditioned hotels; charming vacation lands with average temperatures lower than major U. S. cities during July and August.



## EAGLE offers

-  Jet-powered Super-Viscount aircraft to whisk you away the smooth, vibration-free way.
-  Pilots with thousands of hours of jet-powered flights.
-  Complimentary gourmet meals even at tourist fares . . . service by three Bermudian stewardesses.
-  Champagne for all Honeymooners.
-  Traditionally superior British service.

Start right with a Super-Viscount flight via EAGLE

NEW YORK - BALTIMORE / WASHINGTON  
MONTREAL - NASSAU - BERMUDA



In Europe, fly the 22,000-mile network of Eagle Airways, Britain's largest scheduled independent air carrier, member of I.A.T.A.



**HAMBURG** **JERSEY**  
**DINARD** **COPENHAGEN**  
**BERGEN** **PISA/FLORENCE**  
**PALMA** **INNSBRUCK**  
**RIMINI** **LA BAULE**  
**OSTEND** **LUXEMBOURG**  
**BASLE**  
**(AIR/TRAIN)**

Plan wisely . . . See your travel agent

EFFECTIVE JULY 1, 1959

# EAGLE

## SUPER-VISCOUNT 805

### TO BERMUDA AND NASSAU

THE ONLY ALL JET-POWERED SERVICE

Britain's Largest Independent Scheduled Airline



PHOTOGRAPH BY TONY W. HARRIS

# FOR YOUR ISLAND HOLIDAY EFFECTIVE JULY 1, 1959

fly the **EAGLE SUPER-VISCOUNT 805**



**JET POWERED BY ROLLS-ROYCE**

THE ONLY SUPER-VISCOUNT 805 SERVICE TO BERMUDA AND NASSAU  
COMPLIMENTARY MEAL SERVICE ON ALL FLIGHTS

## TO BERMUDA AND NASSAU

READ DOWN	SUNDAY	MONDAY	WEDNESDAY	FRIDAY	SATURDAY	
FLIGHT	102	312	600	104	412	106
MONTREAL lv					9:00	
BALTIMORE-WASHINGTON (Friendship Airport) lv		9:30			↓	
NEW YORK arr		10:20			10:30	
NEW YORK lv	2:00	11:00		10:00	2:00	7:00
BERMUDA arr	4:50	1:50		12:50	4:50	1:50
BERMUDA lv			2:30			9:50
NASSAU arr			5:00			

## FROM NASSAU AND BERMUDA

READ DOWN	SUNDAY	TUESDAY	FRIDAY	SATURDAY		
FLIGHT	101	313	601	103	413	103
NASSAU lv			9:30			
BERMUDA arr			2:00			
BERMUDA lv	10:00	6:00	2:30	10:00	6:00	2:30
NEW YORK arr	1:10	9:10		1:10	9:10	5:40
NEW YORK lv		10:00			10:00	
BALTIMORE-WASHINGTON (Friendship Airport) arr		10:50				
MONTREAL arr					11:20	

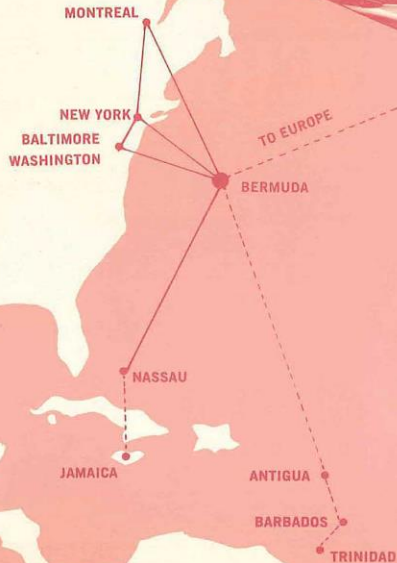
AM times shown LIGHT FACE; PM times shown BOLD FACE; All times local (Montreal, Baltimore, New York on Eastern Daylight Time; Bermuda on Atlantic Standard Time; Nassau on Eastern Standard Time).

## FARES FROM

		ONE WAY	BERMUDA ROUND TRIP	ONE WAY	NASSAU ROUND TRIP
NEW YORK	First Class	\$72.00	\$130.00	\$103.30	\$201.20
	Tourist	\$58.00	\$105.00	\$76.10	\$147.60*
BALTIMORE-WASHINGTON (Friendship Airport)	First Class	\$77.00	\$139.00	\$103.30	\$201.20
	Tourist	\$62.00	\$112.00	\$76.10	\$147.60*
MONTREAL	First Class	\$94.00	\$171.00	\$124.20	\$234.80
	Tourist	\$76.00	\$141.00	\$92.00	\$179.00**
BERMUDA	First Class	--	--	\$72.00	\$129.60
	Tourist	--	--	\$58.00	\$104.40

All Flights First and Tourist Class Service

\*30-day round trip excursion: Tourist \$143.10; \*\*\$153.00



———— OPERATING ROUTES  
----- CERTIFICATED ROUTES

**EAGLE AIRWAYS LTD.**  
 NEW YORK: 51 Vanderbilt Ave., New York 17, N. Y. MUrray Hill 9-7690  
 HAMILTON, BERMUDA: Radio Centre, Tel: 6331  
 MONTREAL: Mezzanine, Sheraton-Mount Royal Hotel, Victor 9-9386  
 WASHINGTON, D. C.: 1627 "K" Street, N.W. District 7-6136  
 BALTIMORE: Call MUlberry 5-4614 or see your Travel Agent  
 NASSAU, B.W.I.: Windsor Field, Tel: 5335