

WELL MADE · WELL PACKED



YOUR TRAVEL AGENT

Designed and printed by Drew and Hopwood Limited, Birmingham 3

DERBY AIRWAYS



TIMETABLE AND FARES **1962**

DERBY AIRWAYS

EASTERN REGION

LUTON AIRPORT
Tel: Luton 2153

MIDLAND REGION and OPERATIONAL BASE

DERBY AIRPORT
Tel: Etwall 521

WESTERN REGION

GLOUCESTER AND
CHELTENHAM AIRPORT
Tel: Churchdown 3481

CARDIFF OFFICE: 3 Park Place, Cardiff. Tel: Cardiff 28999

MANCHESTER OFFICE: c/o Marshall & Snelgrove, St. Ann's Place, Manchester.
Tel: DEAnsgate 7317

Main Agents for Carlisle Area:

EDENVALE TRAVEL BUREAU LTD
at Binn's Ltd, Carlisle.
Tel: Carlisle 23966

Main Agents for the Channel Islands:

JERSEY AIRLINES LTD
Jersey. Tel: Central 24444
Guernsey. Tel: St. Martins 7686

Main Agents for Ireland:

SHANNON CAR RENTALS LTD
Kildare House, Westmorland Street,
Dublin. Tel: 72855, Ext. 14.

Main Agents for Scotland:

SCOTIA TRANSPORT LTD
54 Bothwell Street, Glasgow C2.
Tel: CEN 0847-9

DERBY AIRWAYS Booking Offices and Agencies

	Address	Telephone No.
BARCELONA	Aviacion Y Comercio, S.A., Barcelona Airport	
BELFAST	Silver City Airways Ltd, Belfast Airport	Dandrod 241
BIRMINGHAM	Birmingham Airport	Sheldon 2441 (Ext. 80)
BRISTOL	Gloucester/Cheltenham Airport	Churchdown 3481
CAMBRIDGE	Cambridge Airport	Cambridge 56291
CORK	Aer Lingus, Cork Airport	Cork 25341
DUBLIN	Aer Lingus, Dublin Airport	Dublin 71831
GLASGOW	Renfrew Airport	Renfrew 2352
ISLE OF MAN	I.O.M. Airports Board, Ronaldsway Airport	Castletown 3311
LEEDS/BRADFORD	Silver City Airways Ltd, Leeds/Bradford Airport	Rawdon 2066 and 3087
LONDON	Gatwick Airport	Livingstone 8811
LUXEMBOURG	Lux Airlines, Luxembourg Airport	Luxemb'g 21501
NORTHAMPTON	Northampton Airport	Moulton 3477
OSTEND	Herfurth Air Service, Ostend Airport	Ostend 20766
PALMA	Miguel Estela Estela, Avenida A Maura, 78, Palma	Palma 11526
PERPIGNAN	Aero Services S.A., Perpignan Airport	Perpignan 34-2465
ROTTERDAM	Rotterdam Air, Rotterdam Airport	Rotterdam 89510
SWANSEA	Swansea Airport	Swansea 24063

HEAD OFFICE: DERBY AVIATION LTD
78 BUCKINGHAM GATE, SW1 Tel: ABBey 2345



INDEX

SERVICES

	Page
Birmingham	Cork 6
	Luxembourg 7
	Ostend 7
Bristol	Barcelona 9
	Luxembourg 9
	Ostend 8
	Palma 9
	Perpignan 9
Cambridge	Channel Islands 5
	Ostend 7
Cardiff	Barcelona 9
	Luxembourg 9
	Ostend 8
	Palma 9
	Perpignan 9
Carlisle*	Channel Islands ... 2-3-4
Derby*	Belfast 6
	Channel Islands ... 2-3-4
	Cork 6
	Dublin 6
	Isle of Man 6
	Luxembourg 7
	Ostend 7
	Rotterdam 7
Gloucester/ Cheltenham	Channel Islands ... 2-3-4
	Ostend 9
Luton	Channel Islands ... 5
	Dublin 6
Northampton	Channel Islands ... 2-3-4
Swansea	Ostend 8
FARES 10-11
CAR HIRE 14-15
GENERAL INFORMATION 13
AIRPORT COACH CONNECTIONS	15

*For Carlisle-London } see
Derby-Leeds-Glasgow } separate
time table

CHANNEL ISLANDS

SATURDAYS

CARLISLE, DERBY, BIRMINGHAM, NORTHAMPTON (Sywell), GLOUCESTER/CHELTENHAM (Staverton)— CHANNEL ISLANDS

Frequency	5 May to 22 Sept.	2 June to 22 Sept.	5 May to 15 Sept.	28 April to 26 May	28 April to 26 May and 29 Sept. to 13 Oct.	2 June to 22 Sept.	2 June to 13 Oct.	5 May to 26 May	5 May to 22 Sept.	2 June to 22 Sept.	31 March to 21 April	21 April and 29 Sept. to 6 Oct.
Flight Nos.	DR.121	DR.171	DR.101	DR.103	DR.151	DR.153	DR.105	DR.107	DR.163	DR.109	DR.155	DR.111
CARLISLE dep	—	—	—	—	—	—	—	—	15.30	—	—	—
DERBY dep	08.00	08.10	08.30	09.00	09.30	—	13.15	14.00	—	16.30*	16.30	18.00
BIRMINGHAM dep	—	09.00	—	—	—	—	—	—	—	—	—	—
SYWELL dep	08.40	—	—	—	—	—	—	—	—	—	—	—
STAVERTON dep	—	—	—	—	10.30	10.30	—	—	—	—	17.30	—
GUERNSEY arr	—	—	—	—	—	—	—	—	18.40	—	—	—
JERSEY arr	10.20	10.30	10.15	10.50	12.00	12.00	15.05	15.50	19.30	18.20	19.00	19.50

*Coach connection from SHEFFIELD—see page 15.

DUTY-FREE DRINKS and CIGARETTES are available on most FOREIGN and CHANNEL ISLANDS flights.

CHANNEL ISLANDS— GLOUCESTER/CHELTENHAM (Staverton), NORTHAMPTON (Sywell), BIRMINGHAM, DERBY, CARLISLE

Frequency	2 June to 15 Sept.	5 May to 22 Sept.	5 May to 22 Sept.	28 April to 26 May	28 April to 26 May and 29 Sept. to 13 Oct.	2 June to 13 Oct.	5 May to 26 May	2 June to 22 Sept.	2 June to 22 Sept.	31 March to 21 April	5 May to 22 Sept.	21 April and 29 Sept. to 6 Oct.
Flight Nos.	DR.102	DR.162	DR.122	DR.104	DR.154	DR.106	DR.108	DR.156	DR.174	DR.158	DR.110	DR.112
JERSEY dep	10.45	10.50	11.00	11.30	13.00	15.35	16.30	17.30	18.50	19.30	20.00	20.20
GUERNSEY dep	—	11.40	—	—	—	—	—	—	—	—	—	—
STAVERTON arr	—	—	—	—	15.15	—	—	19.45	—	21.45	—	—
SYWELL arr	—	—	13.05	—	—	—	—	—	—	—	—	—
BIRMINGHAM arr	—	—	—	—	—	—	—	—	20.30	—	—	—
DERBY arr	12.40	—	14.00	13.20	16.10	17.25*	18.20	—	21.20	22.30	21.50	22.10
CARLISLE arr	—	14.50	—	—	—	—	—	—	—	—	—	—

*Coach connection to SHEFFIELD—see page 15.

AIRPORT COACH CONNECTIONS are available for most flights—details on page 15.

CHANNEL ISLANDS

SUNDAYS

CARLISLE, DERBY, NORTHAMPTON (Sywell), GLOUCESTER/CHELTENHAM (Staverton)— CHANNEL ISLANDS

Frequency	24 June to 26 August	27 May to 16 Sept.	20 May and 3 June to 23 Sept.	27 May to 16 Sept.	13 May; 27 May to 17 June; 2 Sept. to 7 Oct.	24 June to 26 August	6 May to 17 June and 2 Sept. to 14 Oct.	27 May to 16 Sept.	3 June to 16 Sept.	3 June to 30 Sept.	24 June to 26 August	29 July to 12 August
Flight Nos.	DR.101	DR.121	DR.2103	DR.107	DR.109	DR.111	DR.113	DR.153	DR.2163	DR.115	DR.117	DR.119
CARLISLE dep	—	—	—	—	—	—	—	—	15.00	—	—	—
DERBY dep	07.50	08.30	08.45	09.15	10.00	12.50	15.00	—	—	16.40	17.50	19.20
SYWELL dep		09.10						15.00				
STAVERTON dep								16.20		18.20		
GUERNSEY arr	09.40	10.50	10.35	11.05	11.50	14.40	16.50	17.00	18.20	—	19.40	21.10
JERSEY arr												

May we arrange for a self-drive car to meet you at the Airport?—see page 14.

CHANNEL ISLANDS— GLOUCESTER/CHELTENHAM (Staverton), NORTHAMPTON (Sywell), DERBY, CARLISLE

Frequency	24 June to 26 August	3 June to 16 Sept.	27 May to 16 Sept.	13 May; 27 May to 17 June; 2 Sept. to 7 Oct.	24 June to 26 August	6 May to 17 June and 2 Sept. to 14 Oct.	27 May to 16 Sept.	3 June to 30 Sept.	3 June to 16 Sept.	20 May to 23 Sept.	24 June to 26 August	29 July to 12 August
Flight Nos.	DR.102	DR.2162	DR.152	DR.104	DR.106	DR.108	DR.124	DR.110	DR.2112	DR.114	DR.116	DR.118
JERSEY dep	10.10	11.05	11.35	12.20	15.10	17.30	17.45	—	19.00	19.20	20.10	21.40
GUERNSEY dep			12.25					18.50				
STAVERTON arr			14.25									
SYWELL arr			—				19.50					
DERBY arr	12.00	—	—	14.10	17.00	19.20	20.30	20.30	20.50	21.10	22.00	23.30
CARLISLE arr	—	14.25	—	—	—	—	—	—	—	—	—	—

CHANNEL ISLANDS

CAMBRIDGE, LUTON — CHANNEL ISLANDS

	THU	SAT	SAT	SAT	FRI	SUN	SAT
Frequency	24 May to 27 Sept.	2 June to 22 Sept.	2 June to 22 Sept.	14 April-26 May and 29 Sept.-13 Oct.	29 June to 24 August	20 May to 23 September	14 July to 11 August
Flight Nos.	DR.141	DR.143	DR.133	DR.133	DR.143	DR.143	DR.145
CAMBRIDGE dep	11.00	—	—	—	—	15.30	—
LUTON dep	11.50	14.30	—	14.30	16.15	16.20	19.00
CAMBRIDGE dep	—		14.45	15.30			
GUERNSEY arr	13.20	16.00	16.30	17.15	17.45	17.50	20.30
JERSEY arr	14.05					18.40	

May we arrange for a self-drive car to meet you at the Airport?—see page 14.

CHANNEL ISLANDS—LUTON, CAMBRIDGE

	SUN	SAT	THU	SAT	SAT	FRI	SAT
Frequency	20 May to 23 Sept.	2 June to 22 Sept.	24 May to 27 Sept.	2 June to 22 Sept.	14 April-26 May and 29 Sept.-13 Oct.	29 June to 24 August	14 July to 11 August
Flight Nos.	DR.144	DR.134	DR.144	DR.146	DR.144	DR.144	DR.148
JERSEY dep	11.20	12.30	15.05	17.00	17.45	18.15	21.00
GUERNSEY dep	12.10		15.50				
LUTON arr	13.40	14.15	17.20	18.30	19.15	19.45	22.30
CAMBRIDGE arr	14.30		18.15	—	20.15	—	—

IRELAND and ISLE OF MAN

LUTON, DERBY — DUBLIN

	SAT	FRI	SAT	SUN
Frequency	7 April to 29 Sept.	20 April to 28 Sept.	2 June to 25 Aug.	20 May to 9 Sept.
Flight Nos.	DR.901	DR.901	DR.2903	DR.903
LUTON dep	08.00	09.15	—	—
DERBY dep	09.10	10.30	14.00	15.15
DUBLIN arr	10.40	12.00	15.30	16.45

DUBLIN — LUTON, DERBY

	SAT	FRI	SAT	SUN
Frequency	7 April to 29 Sept.	20 April to 28 Sept.	2 June to 25 August	20 May to 9 Sept.
Flight Nos.	DR.902	DR.904	DR.2904	DR.904
DUBLIN dep	11.20	13.00	16.00	17.20
DERBY arr	12.50	14.30	17.30	18.50
LUTON arr	14.00	15.40	—	—

DERBY, BIRMINGHAM — CORK

	MON	FRI
Frequency	23 April to 1 October	20 April to 28 September
Flight Nos.	DR.951	DR.951
DERBY dep	09.00	09.00
BIRMINGHAM dep	09.50	09.50
CORK arr	12.00	12.00

A self-drive car solves all your transport problems. We can arrange for a car to meet you at the Airport. (See page 14.)

CORK — BIRMINGHAM, DERBY

	MON	FRI
Frequency	23 April to 1 October	20 April to 28 September
Flight Nos.	DR.952	DR.952
CORK dep	13.00	13.00
BIRMINGHAM arr	15.10	15.10
DERBY arr	16.00	16.00

DERBY — BELFAST

	WED	FRI
Frequency	18 April to 26 September	20 April to 28 September
Flight Nos.	DR.931	DR.933
DERBY dep	09.00	17.00
BELFAST arr	10.40	18.40

OTHER DERBY AIRWAYS SERVICES

CARLISLE-LONDON
DERBY-LEEDS-GLASGOW

See separate time table.

BELFAST — DERBY

	WED	FRI
Frequency	18 April to 26 September	20 April to 28 September
Flight Nos.	DR.932	DR.934
BELFAST dep	11.15	19.10
DERBY arr	12.55	20.50

DERBY — ISLE OF MAN

	SUN	SAT	FRI
Frequency	3 June to 16 Sept.	26 May to 8 Sept.	20 July to 17 August
Flight Nos.	DR.053	DR.053	DR.053
DERBY dep	12.45	14.30	18.00
ISLE OF MAN arr	13.55	15.40	19.10

ISLE OF MAN — DERBY

	SUN	SAT	FRI
Frequency	3 June to 16 Sept.	26 May to 8 Sept.	20 July to 17 August
Flight Nos.	DR.054	DR.054	DR.054
ISLE OF MAN dep	14.30	16.10	19.40
DERBY arr	15.40	17.20	20.50

CONTINENTAL SERVICES

from DERBY, BIRMINGHAM and CAMBRIDGE

DERBY — ROTTERDAM

		SAT
Frequency		2 June to 15 Sept.
Flight No.		DR.2233
DERBY	dep	18.15
ROTTERDAM	arr	20.15

Touring the Continent? We can arrange for a self-drive car to meet you at the Airport.
(See pages 14 and 15.)

ROTTERDAM — DERBY

		SAT
Frequency		2 June to 15 Sept.
Flight No.		DR.2234
ROTTERDAM	dep	20.45
DERBY	arr	22.45

DERBY, BIRMINGHAM, CAMBRIDGE — OSTEND

		SAT	MON	MON	SUN	FRI
Frequency		2 June to 15 Sept.	4 June to 17 Sept.	16 April to 17 Sept.	3 June to 16 Sept.	1 June to 21 Sept.
Flight Nos.		DR.251	DR.251	DR.253	DR.253	DR.253
DERBY ...	dep	08.30	11.40	12.00	15.20	17.30
BIRMINGHAM	dep	09.20	12.30		16.10	18.15
CAMBRIDGE	dep	10.30				
OSTEND	arr	11.30	14.00	13.45	17.40	19.45

OSTEND — CAMBRIDGE, BIRMINGHAM, DERBY

		SUN	SAT	MON	MON	FRI
Frequency		3 June to 16 Sept.	2 June to 15 Sept.	16 April to 17 Sept.	4 June to 17 Sept.	1 June to 21 Sept.
Flight Nos.		DR.252	DR.254	DR.254	DR.256	DR.254
OSTEND	dep	12.20	12.30	14.45	15.00	20.30
CAMBRIDGE	arr		13.30			
BIRMINGHAM	arr	13.50	14.45		16.30	22.00
DERBY ...	arr	14.40	15.35	16.30	17.20	22.50

DERBY, BIRMINGHAM — LUXEMBOURG

		SUN	SAT
Frequency		3 June to 7 October	12 May to 22 September
Flight Nos.		DR.243	DR.243
DERBY	dep	12.15	18.00
BIRMINGHAM	dep	13.05	
LUXEMBOURG	arr	16.05	21.00

All timings are from airport to airport and are in terms of the prevailing British time.

LUXEMBOURG — BIRMINGHAM, DERBY

		SUN	SUN
Frequency		13 May to 23 September	3 June to 7 October
Flight Nos.		DR.242	DR.244
LUXEMBOURG	dep	08.45	16.50
BIRMINGHAM	arr		19.50
DERBY	arr	11.45	20.40

CONTINENTAL SERVICES from CARDIFF and BRISTOL

CARDIFF, BRISTOL — MAJORCA (Palma)

	SAT	SUN
Frequency	12 May to 20 October	27 May to 7 October
Flight Nos.	DR.3303	DR.3303
CARDIFF dep	20.45	20.45
BRISTOL dep	21.25	21.25
PALMA arr	01.40 (Sun)	01.40 (Mon)

All timings are from airport to airport and are in terms of the prevailing British time.

MAJORCA (Palma) — BRISTOL, CARDIFF

	SUN	MON
Frequency	13 May to 21 October	28 May to 8 October
Flight Nos.	DR.3302	DR.3302
PALMA dep	02.55	02.55
BRISTOL arr	07.20	07.20
CARDIFF arr	08.00	08.00

CARDIFF, BRISTOL — BARCELONA

	FRI
Frequency	18 May to 12 October
Flight Nos.	DR.3323
CARDIFF dep	21.30
BRISTOL dep	22.15
BARCELONA arr	02.00 (Sat)



All four-figure Flight Numbers indicate services operated by four-engined aircraft.

BARCELONA — BRISTOL, CARDIFF

	SAT
Frequency	19 May to 13 October
Flight Nos.	DR.3322
BARCELONA dep	03.15
BRISTOL arr	07.00
CARDIFF arr	07.45

CARDIFF, BRISTOL — PERPIGNAN

	FRI
Frequency	18 May to 12 October
Flight Nos.	DR.3313
CARDIFF dep	22.30
BRISTOL dep	23.10
PERPIGNAN arr	02.35 (Sat)

Touring the Continent? We can arrange for a self-drive car to meet you at the Airport. (See pages 14 and 15.)

PERPIGNAN — BRISTOL, CARDIFF

	SAT
Frequency	19 May to 13 October
Flight Nos.	DR.3312
PERPIGNAN dep	03.50
BRISTOL arr	07.15
CARDIFF arr	08.00

CARDIFF, BRISTOL — LUXEMBOURG

	FRI
Frequency	1 June to 14 September
Flight Nos.	DR.333
CARDIFF dep	21.00
BRISTOL dep	22.00
LUXEMBOURG arr	01.05 (Sat)*

*Note—Rail connections are available between LUXEMBOURG and SWITZERLAND. Outgoing passengers arrive Basle 06.38 (Sat) and return from Basle 23.55 (Fri).

LUXEMBOURG — BRISTOL, CARDIFF

	SAT
Frequency	2 June to 15 September
Flight Nos.	DR.332
LUXEMBOURG dep	05.00*
BRISTOL arr	08.00
CARDIFF arr	09.00

FARES

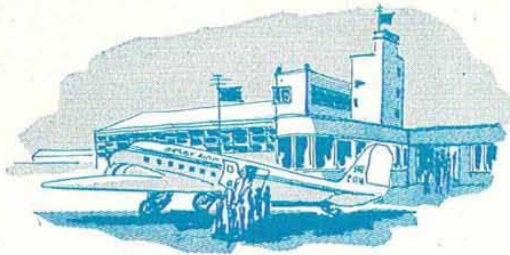
AND EXCESS BAGGAGE RATES

INTERNAL and CONTINENTAL

	Normal Fares		Tourist Excursion Fares					Excess Baggage per kilo (2.2 lb.)	
	Single	Return	Period						
	£ s.	£ s.	£ s.						Validity
BIRMINGHAM									
Cork	9 3	16 10	13 7	Any day up to 15th June and from 1st October; Tue, Wed, Thu, 16th June to 30th September				17 days	1 11
Luxembourg	12 7	22 5	19 3	1st June to 31st October				1 month	3 7
Ostend	7 19	15 6	12 9	Fri, Sat, Sun, 1st April to 31st October				1 month	2 5
			10 16	Mon only, 1st April to 31st October				1 month	2 5
BRISTOL									
Barcelona	24 17	44 16	34 7	Night Tourist, Peak, 16th June to 30th September				1 month	6 4
			31 3	Night Tourist, Off-peak, up to 15th June and from 1st October				1 month	6 4
Luxembourg	11 18	21 10	16 8	1st June to 31st October				1 month	3 2
Ostend	7 9	13 9	9 19	Mon only, 1st April to 31st October				1 month	2 5
			11 12	Fri, Sat, Sun, 1st April to 31st October				1 month	2 5
Palma	27 0	48 13	38 5	Night Tourist, Peak, 16th June to 30th September				1 month	7 1
			35 1	Night Tourist, Off-peak, up to 15th June and from 1st October				1 month	7 1
Perpignan	24 13	44 7	34 0	Night Tourist, Peak, 16th June to 31st October				1 month	5 7
			30 15	Night Tourist, Off-peak, up to 15th June				1 month	5 7
CAMBRIDGE									
Ostend	7 11	13 12	11 15	Fri, Sat, Sun, 1st April to 31st October				1 month	1 10
CARDIFF									
Barcelona	24 17	44 16	34 7	Night Tourist, Peak, 16th June to 30th September				1 month	6 4
			31 3	Night Tourist, Off-peak, up to 15th June and from 1st October				1 month	6 4
Luxembourg	11 18	21 10	18 8	Sat, Sun, 1st June to 31st October				1 month	3 2
Ostend	7 9	13 9	9 19	Mon only, 1st April to 31st October				1 month	2 6
			11 12	Fri, Sat, Sun, 1st April to 31st October				1 month	2 6
Palma	27 0	48 13	38 5	Night Tourist, Peak, 16th June to 30th September				1 month	7 1
			35 1	Night Tourist, Off-peak, up to 15th June and from 1st October				1 month	7 1
Perpignan	24 12	44 7	34 0	Night Tourist, Peak, 16th June to 31st October				1 month	5 7
			30 15	Night Tourist, Off-peak, up to 15th June				1 month	5 7
DERBY									
Belfast	5 4	10 8		Any day except Sat between 1st July and 11th September				1 year	1 2
Carlisle	3 10	7 0	5 15	Any day				30 days	1 0
Cork	9 3	16 10	13 7	Any day up to 15th June and from 1st October; Tue, Wed, Thu, 16th June to 30th September				17 days	1 4
Dublin	6 16	12 5	9 3	Any day up to 15th June and from 1st October; Tue, Wed, Thu, 16th June to 30th September				17 days	1 8
Glasgow	5 1	10 2		Any day, 1st April to 31st May, and 1st November to 31st March				1 year	1 4
	5 15	11 10		Any day, 1st June to 31st October				1 year	1 4
Luxembourg	12 7	22 5	19 3	Any day, 1st April to 1st October				1 month	3 7
Ostend	7 19	15 6	12 9	Fri, Sat, Sun, 1st April to 31st October				1 month	2 5
			10 16	Mon only, 1st April to 31st October				1 month	2 5
Rotterdam	10 17	19 7		Any day				1 year	2 11
GLOUCESTER - CHELTENHAM									
Ostend	7 9	13 9	9 19	Mon only, 1st April to 31st October				1 month	2 6
			11 12	Fri, Sat, Sun, 1st April to 31st October				1 month	2 6
LEEDS - BRADFORD									
Glasgow	4 5	8 10		Any day, 1st April to 31st May, and 1st November to 31st March				1 year	1 0
	4 19	9 18		Any day, 1st June to 31st October				1 year	1 0
LUTON									
Dublin	8 19	16 3	13 11	Any day up to 15th June and from 1st October; Tue, Wed, Thu, 16th June to 30th September				17 days	2 3
LONDON (Gatwick)									
Carlisle	5 5	10 10		Any day				1 year	1 0
SWANSEA									
Ostend	7 9	13 9	9 19	Mon only, 1st April to 31st October				1 month	2 8
			11 12	Fri, Sat, Sun, 1st April to 31st October				1 month	2 8

CHILDREN—50 per cent of fare (2-12 years). 10 per cent of fare under 2 years.

FREE BAGGAGE ALLOWANCE—30 lb. per passenger.



FARES

AND EXCESS BAGGAGE RATES

CHANNEL ISLANDS and ISLE OF MAN

All fares available 12 months.

To: JERSEY or GUERNSEY

From	Saturdays, 1st July to 16 September		Sundays, Mondays, Fridays, 1st June to 1st October. Saturdays, 1st June to 30th June and 17th Sept. to 1st October		Any day up to 31st May and from 2nd Oct. Tuesdays, Wednesdays, Thursdays, 1st June to 30th Sept.		Excess Baggage Rates per kilo (2.2 lb.)
	Single	Return	Single	Return	Single	Return	
Birmingham ...	£ 7 14	£ 15 8	£ 5 15	£ 11 10	£ 5 6	£ 10 12	1/8
Cambridge ...	£ 7 5	£ 14 10	£ 5 10	£ 11 0	£ 4 16	£ 9 12	-/7
Carlisle ...	£ 9 7/6	£ 18 15	£ 8 2/6	£ 16 5	£ 7 7/6	£ 14 15	1/9
Derby ...	£ 7 15	£ 15 10	£ 5 17	£ 11 14	£ 5 8	£ 10 16	1/8
Gloucester- Cheltenham...	£ 7 4	£ 14 8	£ 5 11	£ 11 2	£ 4 11	£ 9 2	1/3
Luton ...	£ 7 3	£ 14 6	£ 5 8	£ 10 16	£ 4 14	£ 9 8	-/7
Northampton...	£ 7 12	£ 15 4	£ 5 15	£ 11 10	£ 5 5	£ 10 10	-/7

To: ISLE OF MAN

From	Saturdays, 1st July to 16th Sept.		Sundays, Mondays, Fridays, 1st June to 16th Sept. Saturdays, 1st June to 30th June		Any day up to 31st May and from 17th Sept. Tuesdays, Wednesdays, Thursdays, 1st June to 16th Sept.		Excess Baggage Rates per kilo (2.2 lb.)
	Single	Return	Single	Return	Single	Return	
Derby ...	£ 4 17	£ 9 14	£ 4 8	£ 8 16	£ 3 19	£ 7 18	1/4

CHILDREN—50 per cent of fare (2-12 years). 10 per cent of fare under 2 years.

FREE BAGGAGE ALLOWANCE—30 lb. per passenger.

NELSON

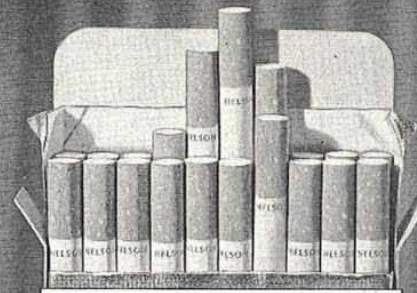
TIPPED

MADE

FOR TODAY

IN A GREAT

TRADITION



NELSON

TIPPED

The Perfection of Tipped Cigarettes

BY THE MAKERS OF SENIOR SERVICE



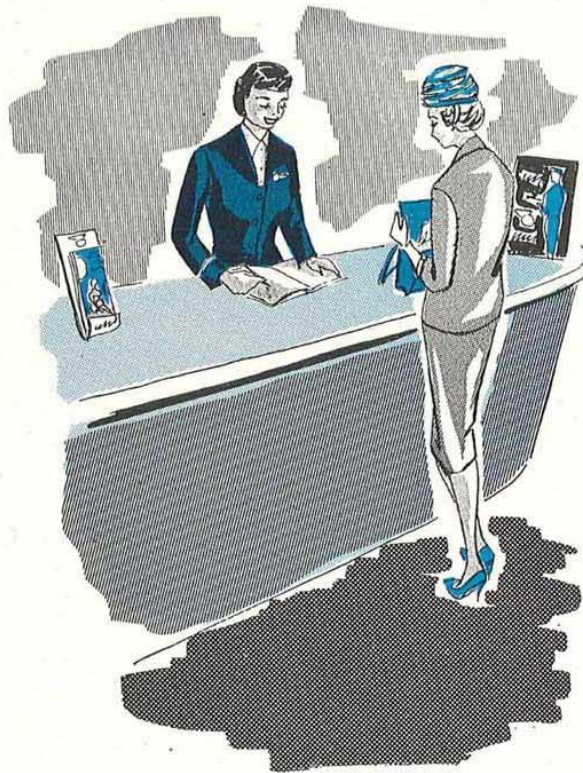
SHELL AVIATION SERVICE

exclusive
suppliers of
aviation fuel
and
engine oil to

DERBY AIRWAYS



DERBY AIRWAYS



GENERAL INFORMATION FOR PASSENGERS

CONDITIONS OF CARRIAGE—The carriage of passengers and baggage is subject to the Company's General Conditions of Carriage, a copy of which can be inspected at the Company's Head Office. Extracts from the Conditions are included in the flight tickets.

RESERVATIONS AND CANCELLATIONS—Seats should be reserved as far in advance as possible direct through our Booking Offices or any local agent. It is in your interest to notify us immediately if you wish to cancel your reservation, as we cannot guarantee refund of fare for a reservation cancelled at short notice. Any flight tickets which have been issued should be returned with your notification to cancel. A deposit of £2 (of which £1 is non-returnable) per seat will secure your reservation. Full payment should be made at least 56 days before the date of flight.

PASSPORTS AND VISAS—Passengers are reminded that Derby Airways cannot accept responsibility for the consequences of any irregularity in passports or any visa you may require for your journey, and passengers must ensure personally that they are in order. Do not pack your passport in your baggage as you will require it on your journey.

CURRENCY CONTROL—If travelling abroad you should consult your local Travel Agent or Bank about regulations applicable to your journey well before the date of travel.

DEPARTURES—Passengers not utilising special coach services (where applicable) are requested to be available at the Airport of embarkation at least 30 minutes before the time of flight for flights limited to the United Kingdom and the Channel Isles. Passengers embarking on Foreign flights (including Eire) are requested to be available at least 45 minutes before the time of flight in order that Customs formalities may be completed. Departure cannot be delayed for passengers who arrive late, and Derby Airways cannot be held responsible for such cases.

U.K. AIRPORT SERVICE CHARGE—The British Ministry of Aviation or local authorities make a charge of seven shillings and sixpence per head on passengers embarking on international flights (including Eire). The only exceptions are children under two years of age and passengers in transit through the United Kingdom. This charge is not included in the fare.

BAGGAGE, EXCESS WEIGHT—Baggage in excess of the free allowance may be carried at the appropriate rates subject to space being available. (See Fares Table.)

PERSONAL ITEMS—In addition to the free allowance, the following may be carried free of charge: A lady's handbag, an overcoat or wrap, a foot rug, an umbrella or walking stick, a small camera, a pair of binoculars, a fully collapsible wheel chair and a reasonable amount of reading matter for the flight. Brief cases, typewriters, and large cameras have to be included in the baggage weights under the regulations of the International Air Transport Association.

PROHIBITED ARTICLES—Government regulations do not permit the carriage on aircraft of a number of articles, including inflammable or explosive material, and you are asked not to carry in your baggage articles which are easily ignited, such as cigarette lighter fluid, matches, etc. On Derby Airways aircraft smoking is permitted, and you may carry a box of SAFETY matches or a lighter with you for use on the journey.

CAMERAS—On international journeys cameras must normally be packed in your checked baggage, which is not taken into the cabin with you, as the use of cameras in aircraft is subject to restrictions over most countries.

TICKETS—Your ticket contains important information concerning your flight and includes extracts from our CONDITIONS OF CARRIAGE which govern your journey. Please examine it carefully.

PARTY TRAVEL—There is a reduction of 5 per cent for parties of between 10 and 14 adults and of 10 per cent for parties over 15 adults. (Two children count as one adult.)

PUNCTUALITY—Every effort is made to ensure punctuality of our services, but Derby Airways cannot accept responsibility for the consequences of a delay to, or a cancellation of, any flight and cannot guarantee making connections.

PORTABLE ELECTRONIC EQUIPMENT—Passengers may not use any portable electronic equipment, such as radios and tape recorders, during flight, because of possible effect on the aircraft's equipment.

FREIGHT—Freight may be accepted on most passenger flights. Rates on application.

CHARTER—Passenger aircraft are available for party charter for day or weekend excursions at home or abroad. Immediate quotations for flight only or for fully inclusive outing including accommodation and excursions available from the Traffic Manager, Derby Airport. Freighter aircraft may also be chartered.

OPEN CAR PARKING FACILITIES are available at most airports. Covered accommodation can usually be obtained by prior arrangement.

INTERAVAILABILITY—Derby Airways flight tickets are available or return flights on Air France, B.E.A., B.O.A.C., Jersey Airlines, K.L.M., Pan American, S.A.S. and Silver City routes—and vice versa.

CAR HIRE—Self-drive cars are available at most of our destinations. We will be pleased to make the necessary arrangements. (See advertisers' announcements.)

ALL-INCLUSIVE HOLIDAYS—including full hotel accommodation and excursions have been arranged in conjunction with many of our flights. Details on application.

PASSENGER BRIEFING—Before the flight commences you will be fully briefed by the air hostess as to procedure; the height at which you will be flying, estimated time of arrival, the weather and other items of interest. On most foreign and Channel Islands flights she will serve you with duty-free drinks and cigarettes and will be pleased to ensure your comfort during the flight.

Going to JERSEY?

Thinking
of
hiring
a car?



*It's the easiest and most convenient
way of getting around Jersey*

WRITE NOW FOR BROCHURE
AND RESERVATION FORM
(no obligation)



FALLE'S HIRE CARS

DEPT. D.A.

Airport Road, Jersey

We meet all Derby Airways flights at Jersey Airport

Motor through lovely

I R E L A N D

*Hire a self-drive or
chauffeur-driven car*

**Package tour for Anglers,
Golfers and Seaside Holidays**

Free Brochure from

SHANNON CAR RENTALS LIMITED

KILDARE HOUSE, WESTMORELAND STREET,

DUBLIN

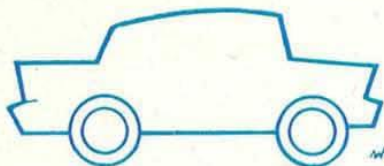
Tel: 72855

RENT A CAR and drive thro' GUERNSEY

Self-drive and chauffeur
driven service at Guernsey
airport means speedy,
efficient rentals — write today to

EXCLUSIVE DRIVE HIRE

ST. PETER PORT, GUERNSEY, C.I.



COLUX CAR RENTAL SERVICE

in

LUXEMBOURG

Cable: HERTZCARS

Telephone: 280-80

LUXEMBOURG, DERNIER SOL 24

Chauffeur-driven service upon request

AIRPORT COACH CONNECTIONS

BRISTOL

Bristol Omnibus Co. coaches depart from Bristol Coach Station (off Haymarket) for Lulsgate Airport one hour before flight departure, picking up en route at Temple Meads railway station (five minutes later). Single fare 3/6.

CAMBRIDGE

Eastern Counties Omnibus Co's Express Services E. & H. pass the airport and are available to passengers from Norwich, Bury St. Edmunds, Royston, Great Yarmouth, Bedford, St. Neots, etc. The local bus service, No. 102, will convey passengers from the City to the airport. For details apply Eastern Counties Omnibus Co. Ltd., 112-114 Hills Road, Cambridge. Tel. 3418.

CARDIFF

Western Welsh Co. coaches depart from Wood Street Air Terminal for Rhoose Airport one hour before flight departure time. Single fare 3/6.

CARLISLE

Airport coaches leave United Automobile Services Bus Station, Lowther Street, Carlisle, approximately one hour before flight departure time. Single fare 2/6.

DERBY

Airport coaches depart Huntingdon Street Bus Station, Nottingham, one and three-quarters of an hour before flight departure time and Derby Central Bus Station one hour before flight departure time. Single fare, Nottingham 6/-, Derby 3/-. Seats must be booked in advance. Coach connections are also available from Birmingham, Manchester, and Sheffield (see under Sheffield)—further details on application to Derby Airport. Coaches meet aircraft arrivals for return journey.

DUBLIN

Airport coach connection with Busaras, Central Bus Station, Store Street, Dublin. Returning passengers should report to Busaras at least one hour before flight departure time. Single fare 2/-.

GLASGOW

Airport coach connection with Air Terminal, St. Enoch Square. Single fare 3/-.

GLOUCESTER/CHELTHENHAM

Frequent local bus service from Gloucester or Cheltenham to the Plough Inn, which is also a stop for the Associated Motorways long distance services. Airport taxi from Gloucester or Cheltenham railway or bus stations by arrangement.

GUERNSEY

Local bus service to St. Peter Port Bus Station. Single fare 9d.

ISLE OF MAN

Airport coach service to Air Terminal, Lord Street, Douglas. Single fare 2/6.

JERSEY

Coach service between the airport and the Esplanade, St. Helier. Single fare 1/6.

LEEDS/BRADFORD

Airport coach service to Air Terminal, Bishopsgate Street, Leeds, and to Alexandra Hotel, Great Horton Road, Bradford. Single fare 3/- in each case.

LUTON

A frequent bus service connects Luton railway and bus stations with the airport. Details from Derby Airways, Luton Airport. Tel. Luton 2153.

NOTTINGHAM

See DERBY above.

SHEFFIELD

From the first Saturday in June until the third Saturday in September, coaches for Derby Airport leave Pond Street, Sheffield, at 14.15, Meadowhead (Four Lane Ends) at 14.25, and arrive at Derby Airport at 16.00 for the 16.30 flight to the Channel Islands. Return coaches leave Derby Airport 18.00, arriving Meadowhead 19.35 and Pond Street 19.45. Single fare 7/6.

SWANSEA

Local bus service between Swansea and Fairwood conveys passengers to the airport. Details from Swansea Airport. Tel. Swansea 24063.




**RENT A
RAVERO CAR**
upon arrival at
**ROTTERDAM
AIRPORT**

Your key, Sir!

Reservations via your travel agent,
Derby Airways offices, or write to:

RAVERO CAR HIRE

P.O. BOX 921
ROTTERDAM HOLLAND
Phone: 139200



**NOW THE FIRST
THING TO DO
RENT A CAR AT**

OSTEND CAR HIRE

33 AV. CHARLES JANSSENS, OSTEND
Tel: 736.69

GARAGE: 11/17 AV. DE GROENENDAEL
AND 655B CHSEE, DE NIEUPOORT, OSTEND