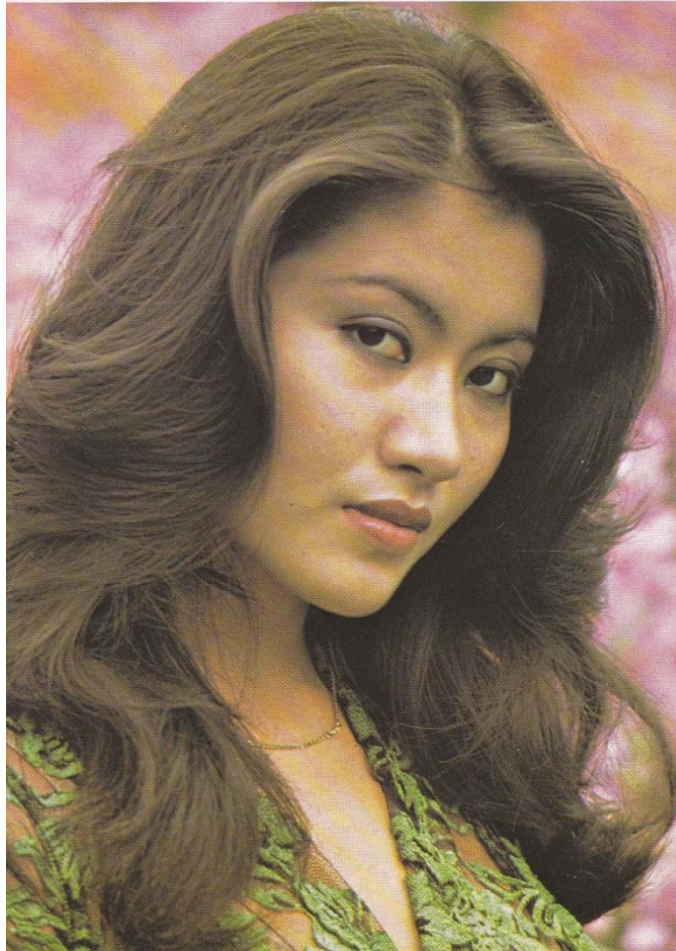
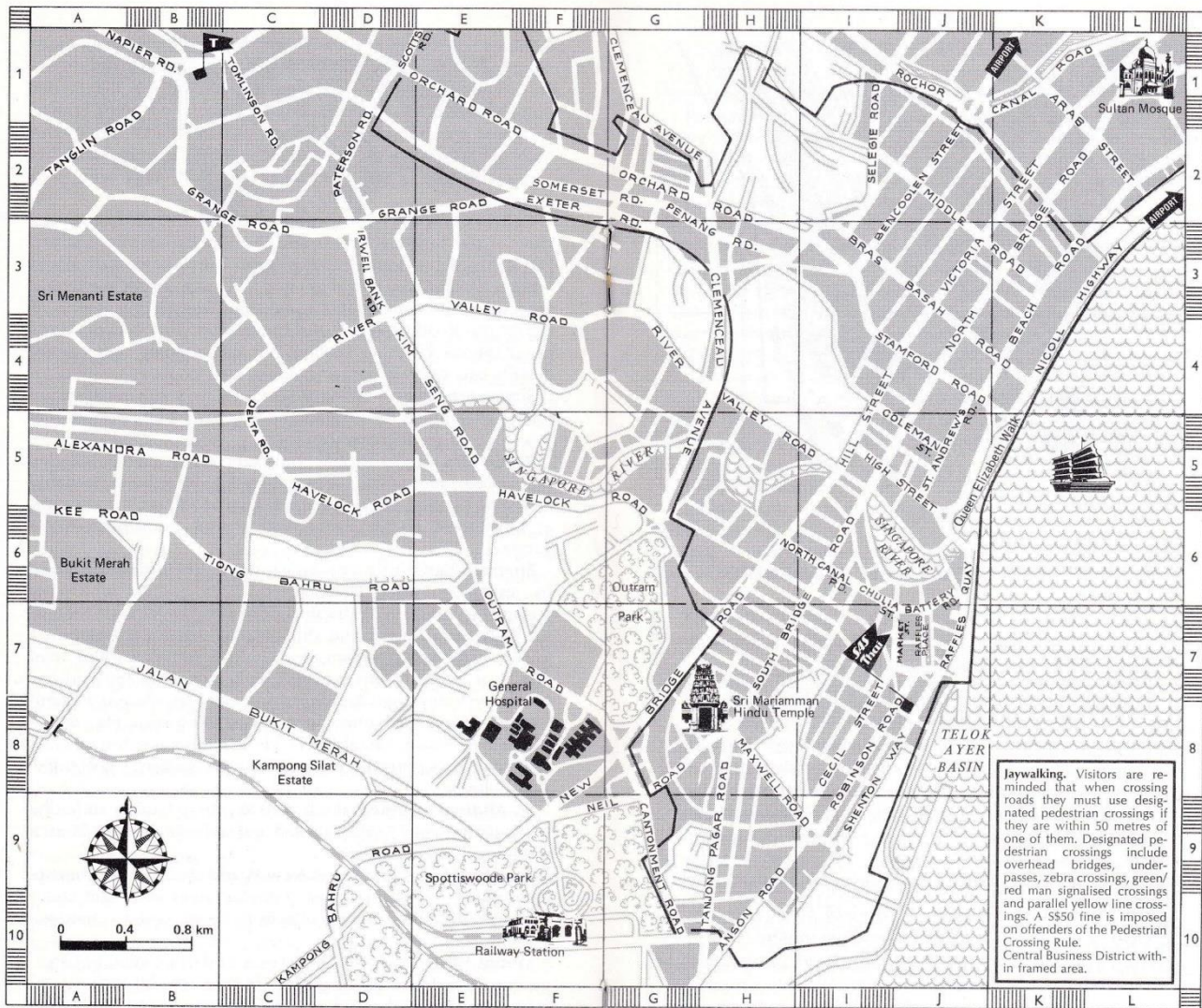


# Singapore

SAS City Portrait






Code numbers in this booklet refer to the above map. Thus (J8) is located where lines drawn from "J" and "8" cross each other.

### Interesting sights in Singapore

- |  |   |
|--|---|
| (I4) Armenian Church.                  | (I3) Nat. Museum and Art Gallery.       |
| (A1) Botanic Gardens.                  | (H4) National Theater                   |
| (J3) Cathedral of the Good Shepherd    | (I5) Padang.                            |
| (I7) Change Alley.                     | (I4) St. Andrew's Cathedral.            |
| (G7) Chinatown                         | (B1) Singapore Handicraft Center.       |
| (I7) Clifford Pier/Harbor Cruises.     | (I6) Singapore River.                   |
| (K5) Queen Elizabeth Walk.             | (I6) Sir Stamford Raffles Landing Site. |
| (I6) Empress Place.                    | (I7) Sri Mariamman Temple.              |
| (K4) Memorial Park Land.               | (L1) Sultan Mosque.                     |
| (I6) Merlion Park.                     | (I5) Supreme Court and City Hall.       |
| (south of D10) Mount Faber/Cable Cars. | (I8) Telok Ayer Market.                 |
|  | (H4) Van Kleeef Aquarium.               |

### Useful addresses

 **SAS/THAI International Office:**  
Denmark House, Raffles Quay (J8).  
Tel. 43 20 11, Reservations: 91 98 77.

 **Singapore Tourist Promotion Board:**  
Tudor Court, Tanglin Road (B1). Tel. 235 6611.

**Singapore International Chamber of Commerce:**  
Denmark House (J8). Tel. 98 12 55.

Distance from city center to airport 12 km (7½ miles).



## Before you buy a watch, hold a Universal Genève in your hand.

Notice that despite its very thin profile, there is a real heft to a Universal Genève.

It is a strong watch, built to last. A unique internal security system called "Triple Seal" Protection (available on several models such as the one below) excludes microscopic dirt and moisture.

No other watch, this thin, protects its movement so well.

Since 1894.

Its elegant face tells you that this watch was built with great care, patience, and yes, art. Its finish tells you this watch was crafted by hand. (As were Universal Genève's first watches in 1894.)

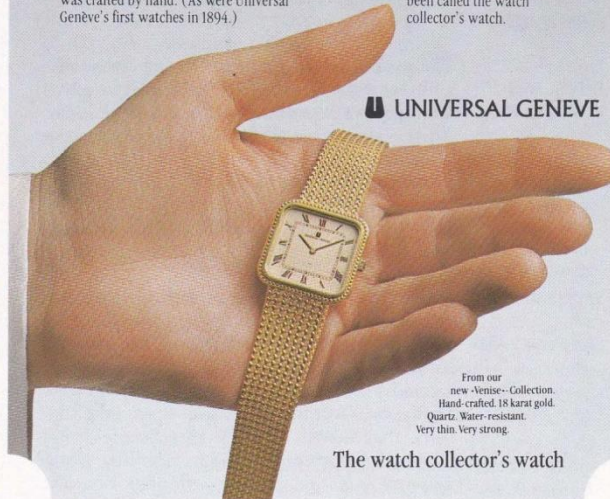
Its classic lines will look "right" years from now.

An investment to consider.

It is possible to spend more for a watch. And it is certainly possible to spend a great deal less. But in an age of mile-long assembly lines, very few watches are now crafted with the care and the patience of this watch, individually, by hand.

The watch collector's watch.

And if you wish your watch, over the years, to give you more than just time, you will appreciate why Universal Genève has been called the watch collector's watch.



**U** UNIVERSAL GENEVE

From our  
new *Suisse* Collection.  
Hand-crafted. 18 karat gold.  
Quartz. Water-resistant.  
Very thin. Very strong.

The watch collector's watch

UNIVERSAL GENEVE-OFFICIAL AGENTS IN SINGAPORE

**CORTINA WATCH CENTRE Pte Ltd** G8, Upper Ground Floor,  
Colombo Court and G23, Orchard Towers, Orchard Road.

**EASTERN WATCH Co.** 285, South Bridge Road • 2, Collyer Quay •  
G15-26, Peninsula Shopping Complex, Coleman Street.

**SIOW HIAP Bros.** 70, North Bridge Road and  
G11-12-27-28, High Street Shopping Centre, North Bridge Road.