



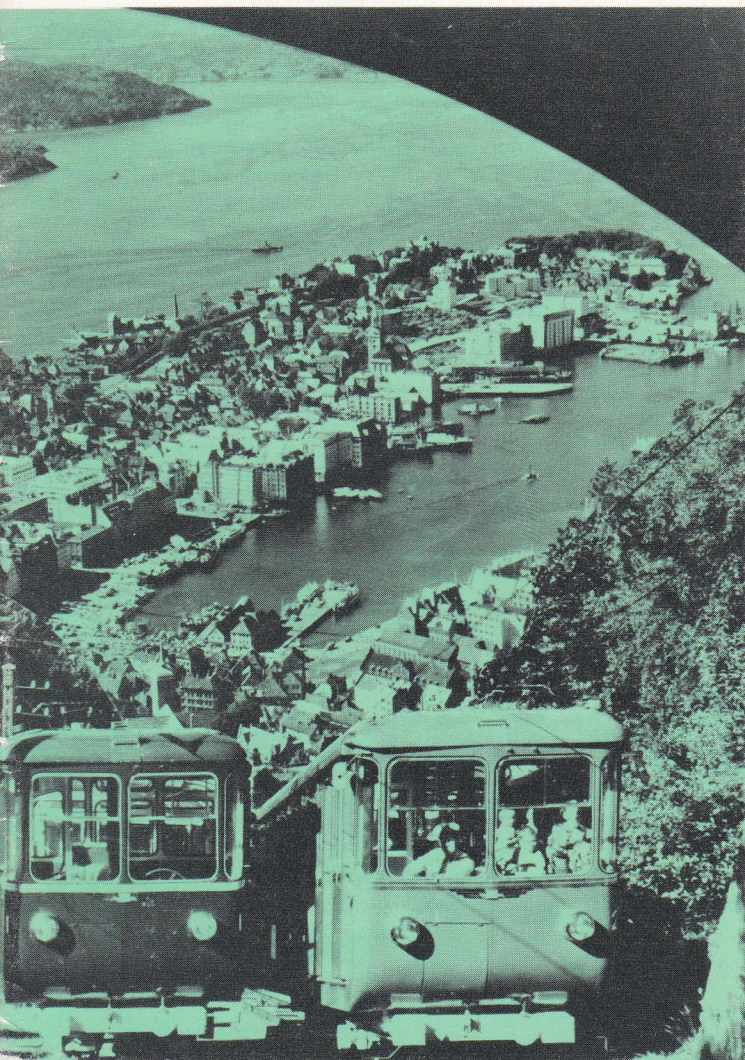
Bergen

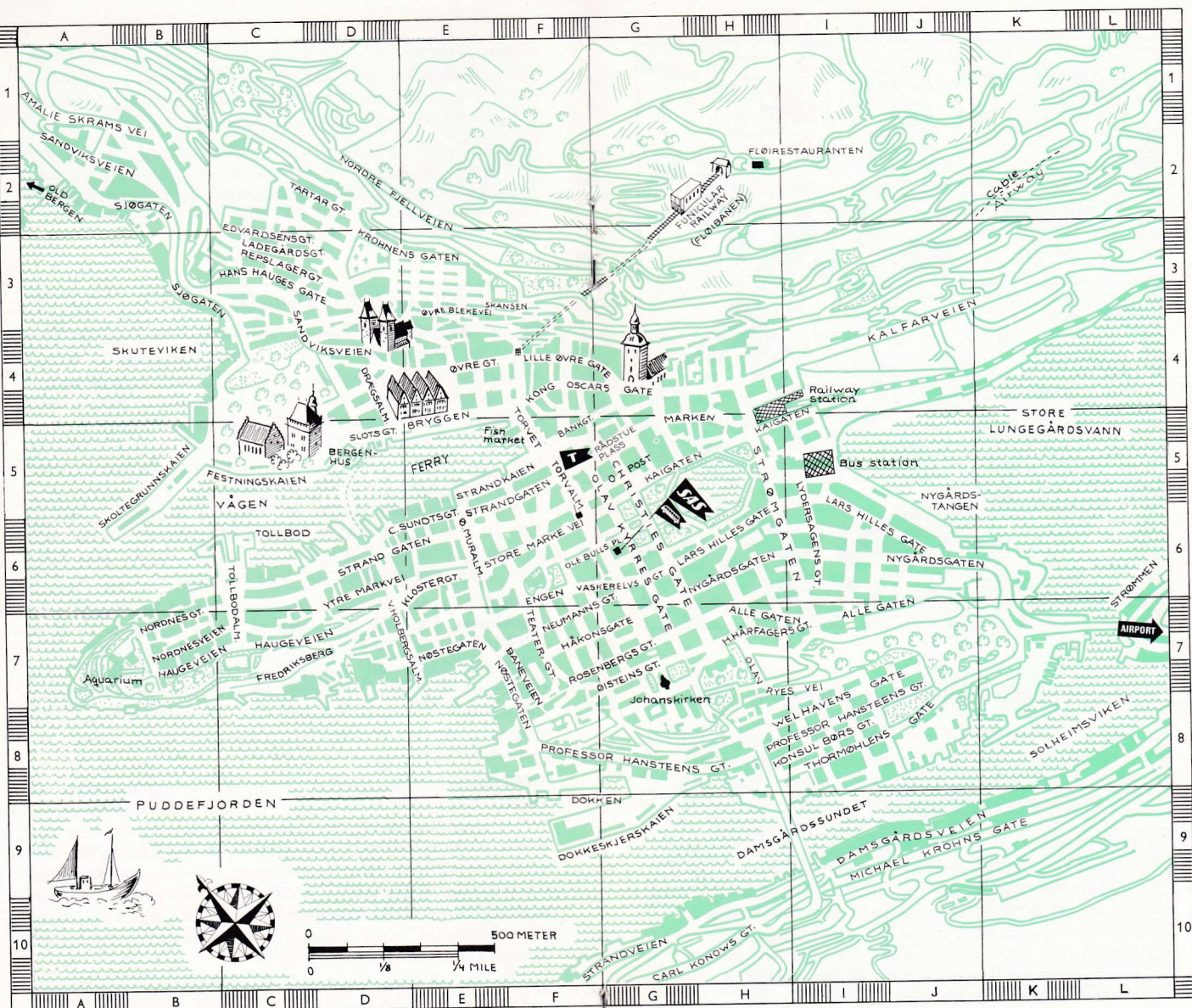
and the fjord country

SAS CITY PORTRAIT



SAS SCANDINAVIAN AIRLINES





Code numbers in this booklet refer to the above map. Thus (G6) is located where lines drawn from "G" and "6" cross each other.

Interesting sights in Bergen

(C5) Bergenhus Fortress.

(D4) Mariakirken
(St. Mary's Church).

(E4) Bryggen
(the old, wooden houses).

(E4) The Hanseatic Museum.

(F5) The Fish Market.

(H2) Fløyen Mountain.

(G4) The Cathedral.

(H4) Main Railway Station.

(I5) Central Bus Station.

(G6) Byparken (The City Park with Arts & Crafts Museum, Municipal Art Gallery and Fishery Museum).

(H7) The University (Museums of Natural History and History).

(H8) Maritime Museum.

(F6) Den Nationale Scene
(The National Theater).

(A7) Nordnes Park. Aquarium.

(A2) Old Bergen
(Open-air Museum).

(K2) Cable Airway.

SAS SCANDINAVIAN AIRLINES

SAS
Special
Meal
Service



If your diet is governed by religion, health, or regional preference, or if for any reason you require something other than the regular menu, ask your SAS office or travel agent about the SAS Special Meal Service.

This extra SAS service allows you to preorder from eight different categories of special meals (including those dictated by religion) – 70 à la carte dishes, among which we are sure you will find a meal to suit your individual taste, or that of your children.

Edited by Alan C. Lovejoy

© World-copyright 1969 SCANDINAVIAN AIRLINES SYSTEM 982331/6904
No part of this publication may be reproduced without permission in writing from SAS. All prices quoted within are subject to change without notice, and in event of such a change, SAS can bear no responsibility.