

HORAIRES TIMETABLES

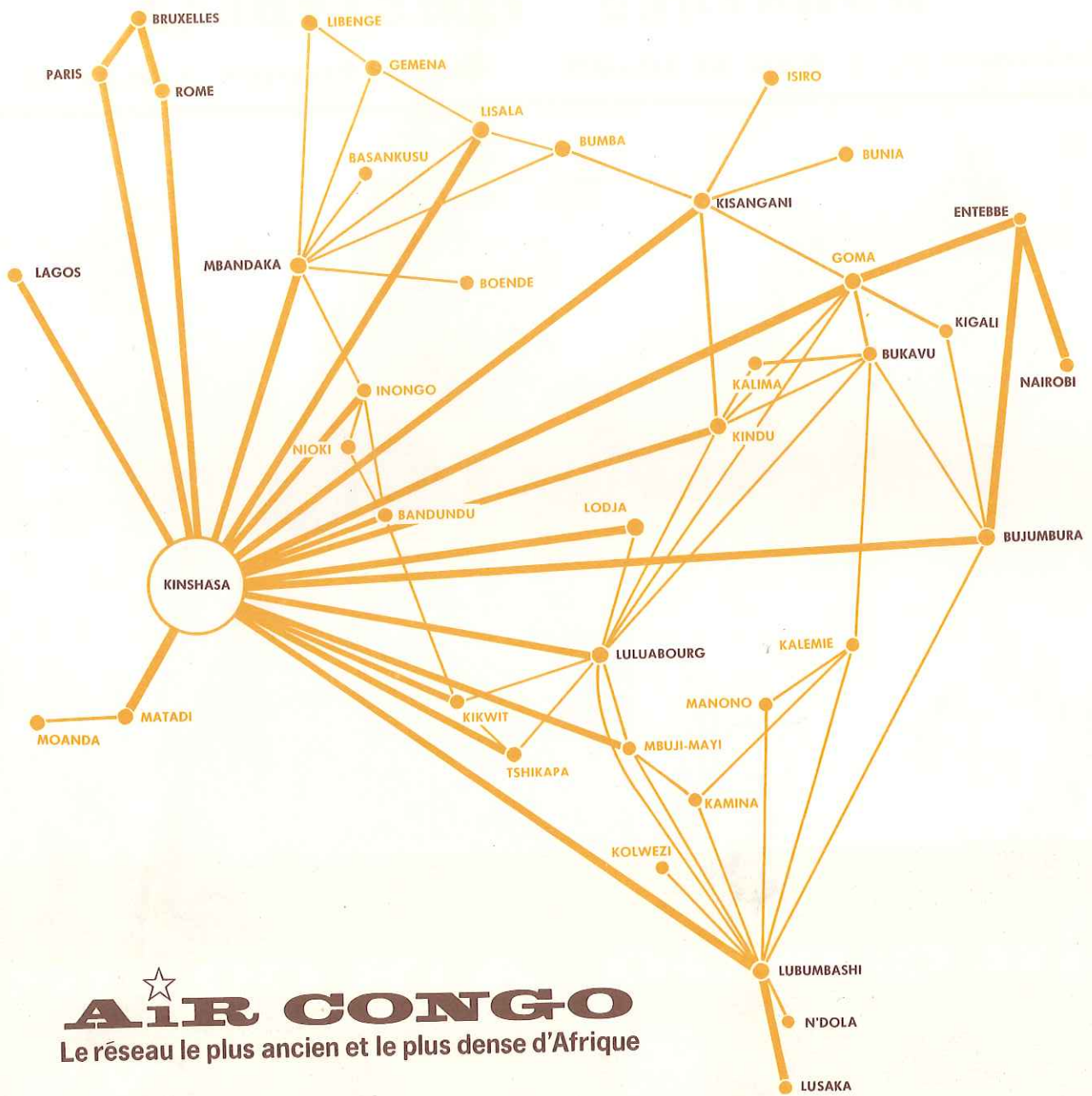
Valable du 1-4 au 31-10-67

Valid from 1-4 to 31-10-67



AIR CONGO AIR CONGO






AIR CONGO
 Le réseau le plus ancien et le plus dense d'Afrique

**OUR INTERNATIONAL OFFICES
NOS BUREAUX A L'ETRANGER**

TOWNS VILLES	COUNTRIES PAYS		ADRESSES	TELEGRAMS	PHONE
Bruxelles	Belgique	AIR CONGO Regional Management	52, rue de la Montagne	AIRCONGOBRU	11.84.54
Bujumbura	Burundi	AIR CONGO Regional Management	7, Place de l'Indépendance Building Sella P.O. Box 890		27.39
Paris	France	AIR CONGO Regional Management	16, Place Vendôme		073.33.31
Roma	Italia	AIR CONGO Direzione Regionale	Via Bissolati 39	AIRCONGO	482.662 482.918
Nairobi	Kenya	AIR CONGO Regional Management	Shretta House Kimathi Street P.O. Box 6282		25.625
Lagos	Nigeria	AIR CONGO Regional Management	19, Martins Street	AIRCONGO	25.746
Kampala (Entebbe)	Uganda	AIR CONGO Regional Management	Inlaks House P.O. Box 2477 79, Kampala Road	AIRCONGO	73910
Ndola Lusaka	Zambia	AIR CONGO Regional Management	108, Cairo Road P.O. Box 161		

**OUR LOCAL MANAGEMENT OFFICES
NOS DIRECTIONS REGIONALES**

TOWNS VILLES		ADRESSES	PHONE
Bukavu	AIR CONGO	Royal Résidence Hôtel Avenue Royale 91	2161 2162 2163
Kinshasa	AIR CONGO	N'DJILI AIRPORT	6031/6131
Kisangani	AIR CONGO	Hôtel Congo Palace Avenue de l'Eglise	3454 3456
Lubumbashi	AIR CONGO	1156, av. Lubumbashi	3311 3312 3313
Luluabourg	AIR CONGO	Avenue Léopold 313	2122
Mbandaka	AIR CONGO	Avenue Dubreucq 6	2646 2458 2659

★ AIR CONGO

AIR TERMINUS ... AVENUE DU PORT ... KINSHASA

2

INFORMATIONS PASSAGERS

Ventes de billets et réservations
Tél : 4986 - International
4987 - Congo

AFFRETEMENTS

Tél : 4988

MARCHANDISES

Tél : 4283 - Livraison Kinshasa
4987 - Réservation - Tarifs

DIRECTION COMMERCIALE - B. P. 8552

Tél : 4985 - 10 lignes

SERVICE ETUDES COMMERCIALES

Tél : 4989

DIRECTION GENERALE - N'DJILI - B. P. 10.120

Tél : 6031 - 6131

AEROPORT DE N'DJILI - B. P. 10.120

Tél : 6222 - Information Traffic - Passagers
6083 - Service Fret (départ et arrivée)
6249 - Dédouanement

PASSENGERS INFORMATION

Sales and Booking Offices
Phone : 4986 - International
4987 Congo

CHARTERS

Phone : 4988

CARGO

Phone : 4283 - Delivery at Kinshasa
4987 - Reservation Office - Tariffs

COMMERCIAL DEPARTMENT P. O. BOX 8552

Phone : 4985 - 10 cables

FARES AND REGULATIONS DEPARTMENT

Phone : 4989

GENERAL MANAGEMENT N'DJILI - P. O. BOX 10.120

Phone : 6031 - 6131

N'DJILI AIRPORT - P. O. BOX 10.120

Phone : 6222 - Traffic - Passengers Information
6083 - Cargo Service (Depart. & Arrival)
6249 - Custom Office

SYMBOLS

F	FIRST CLASS	* No local traffic between FIH - KKW.-	GMT	GREENWICH MEAN TIME
Y	ECONOMY CLASS		(●)	NO LOCAL TRAFFIC BETWEEN FIH-FBM & V.V.
T	TOURIST CLASS	● Authorized only for <u>direct transit paps</u> in EBB from BRUSSELS & ATHENS by SN525 & SN527.-	▼	NO LOCAL TRAFFIC
d.	DEPARTURE		(x)	NO LOCAL TRAFFIC BETWEEN FIH-LLB & V.V.
a.	ARRIVAL		☺	BREAKFAST
1	MONDAY		×	DINNER OR LUNCH
2	TUESDAY			SNACK
3	WEDNESDAY	○ Authorized only for <u>direct transit paps</u> in EBB destined to ATHENS & BRUSSELS by SN528 & SN526.-	B707	BOEING 707 JET
4	THURSDAY		DC-3	DOUGLAS DC.3
5	FRIDAY		DC-4	DOUGLAS DC.4
6	SATURDAY		DC-6	DOUGLAS DC.6
7	SUNDAY	+ One hour earlier until 27 May & from 24 Sep.	FRIEND	FOKKER 27 FRIENDSHIP.-

INDEX ET HEURES LOCALES INDEX AND LOCAL TIMES								
INTERNATIONAL SERVICES SERVICES INTERNATIONAUX				DOMESTIC SERVICES SERVICES INTERIEURS				
	Pages	GMT		Pages	GMT		Pages	GMT
Athènes	14, 15	+ 2	Bandundu	5, 6, 7	+ 1	Kindu	6, 7	+ 2
Bruxelles	14, 15	+ 1	Basankusu	4, 5	+ 1	Kinshasa	4, 5, 6, 7, 8, 9, 12, 16, 18	+ 1
Bujumbura	13	+ 2	Baudouinville	20	+ 2	Kisangani	4, 5, 7	+ 2
Douala	13	+ 1	Beni	18	+ 2	Kisenge	19	+ 2
Entebbe	13	+ 3	Boende	4, 5	+ 1	Kolwesi	8, 9, 19	+ 2
Genève	14, 15	+ 1	Boma	18	+ 1	Kongolo	20	+ 2
Goma	13	+ 2	Bujumbura	7, 8, 9, 14, 15, 18, 19	+ 2	Leverville	18	+ 1
Johannesburg	14, 15	+ 2	Bukavu/Kamembe	7, 8, 9, 14, 15, 18, 19, 20	+ 2	Libenge	4, 5	+ 1
Kano	14, 15	+ 1	Bumba	4, 5	+ 1	Lisala	4, 5	+ 1
Kigali	13	+ 2	Bunia	4, 5, 18	+ 2	Lodja	6, 19	+ 2
Kinshasa	12, 13, 14, 15	+ 1	Dilolo	19	+ 2	Lubudi	20	+ 2
Lagos	12, 13	+ 1	Gemena	4, 5	+ 1	Lubumbashi	7, 8, 9, 14, 15, 16, 19, 20	+ 2
Lubumbashi	12, 14, 15	+ 2	Goma	6, 7, 14, 15, 16, 18	+ 2	Luena	20	+ 2
Lusaka	12	+ 2	Idiofa	18	+ 1	Luiza	19	+ 2
Madrid	14, 15	+ 1	Inongo	4, 5	+ 1	Luluabourg	6, 7, 8, 9, 12, 19	+ 2
Nairobi	13	+ 3	Isiro	4	+ 2	Lusambo	19	+ 2
N'Dola	12	+ 2	Kabalo	20	+ 2	Manono	8, 9	+ 2
Paris	14, 15	+ 1	Kalemie (ex-Albertville)	8, 9, 20	+ 2	Masi-Manimba	18	+ 1
Rome	14, 15	+ 1	Kalima	7	+ 2	Matadi	12	+ 1
			Kamina	8, 9, 20	+ 2	Mbandaka	4, 5	+ 1
			Kamipini	20	+ 2	Mbuji-Mayi	6, 7, 8, 9	+ 2
			Kaniama	20	+ 2	Mitwaba	20	+ 2
			Kapanga	19	+ 2	Moanda	12	+ 1
			Kasenga	20	+ 2	Nioki	5	+ 1
			Kasongo	20	+ 2	Pweto	20	+ 2
			Kenge	18	+ 1	Sandoa	19	+ 2
			Kigali	6, 8, 9, 18	+ 2	Tshikapa	6, 7, 19	+ 2
			Kikwit	6, 7, 18	+ 1	Tshumbe	19	+ 2
			Kilwa	20	+ 2			

Tous les horaires sont exprimés en heures locales et sont susceptibles de modifications sans préavis.

All timetables shown are in local times, are subject to alteration without previous notice.

KINSHASA - MBANDAKA - KISANGANI - BUNIA															
AIR CONGO	QC468	QC466	QC819	QC815	QC400	QC822	QC494	QC460	QC400	QC822	QC464	QC400	QC462	QC819	QC461
	DC-3	DC-4	DC-3	DC-3	DC-6	DC-6	DC-3	DC-4	DC-6	DC-6	DC-3	DC-4	DC-4	DC-3	DC-4
	T	T	T	T	F/T	F/T	T	T	F/T	F/T	T	T	T	T	T
	1	1	1	1	2	2	2	3	4	4	4	5	6	6	7
KINSHASA	d.	05.30	08.30		06.00		06.30	06.00	06.00		08.00	05.30	05.00		05.30
		☞	☞		☞		☞	☞	☞		☞	☞	☞		☞
INONGO	a.						08.15								
	d.						08.45								
MBANDAKA	a.	08.05	10.35				09.50	08.05			10.45				07.35
	d.	08.35	11.35				10.20	09.05			11.05				08.35
BASANKUSU	a.		×				11.20				12.05				
BOENDE	a.		12.40												
LISALA	a.			12.25									08.20		
	d.												09.15	10.20	
BUMBA	a.	10.55	12.55	13.25										10.50	
	d.														
GEMENA	a.												10.10		10.05
	d.												11.10		
LIBENGE	a.							10.35					11.45		
KISANGANI	a.			15.35	10.05		11.15		10.05			10.45			
	d.						×								
							12.55								
BUNIA	a.														

BUMBA - KISANGANI - BUNIA - ISIRO & V.V.										
QC815	QC820	QC822	QC820	QC822	AIR CONGO	QC821	QC823	QC821	QC823	QC814
DC-3	DC-3	DC-6	DC-3	DC-6		DC-3	DC-6	DC-3	DC-6	DC-3
T	T	F/T	T	F/T		T	F/T	T	F/T	T
1	2	2	3	4		2	2	3	4	6
13.25					d. BUMBA	a.				08.50
×										
15.35					a. KISANGANI	d.				08.30
	11.00	11.15	08.00	11.15	d.	a.	15.00	15.35	11.45	15.35
	×	×	☞	×			×			
		12.55		12.55	a. BUNIA	d.		14.00		14.00
	12.45		09.45		a. ISIRO	d.	13.30		10.15	

BUNIA - KISANGANI - MBANDAKA - KINSHASA															
AIR CONGO	QC818	QC467	QC495	QC823	QC401	QC460	QC465	QC823	QC401	QC814	QC818	QC469	QC462	QC401	QC461
	DC-3	DC-4	DC-3	DC-6	DC-6	DC-4	DC-3	DC-6	DC-6	DC-3	DC-3	DC-3	DC-4	DC-4	DC-4
	T	T	T	F/T	F/T	T	T	F/T	F/T	T	T	T	T	T	T
	1	1	2	2	2	3	4	4	4	6	6	6	6	6	7
BUNIA	d.			14.00				14.00							
KISANGANI	a.			15.35				15.35							
	d.				16.35					16.35	08.30			13.45	
LIBENGE	d.					11.20							12.30		
GEMENA	a.					11.55									
	d.					12.45									11.05
BUMBA	a.									08.50					
	d.	11.25									09.20	11.20			
LISALA	a.	11.55									09.50				
	d.														12.00
BOENDE	d.		14.00												12.45
BASANKUSU	d.			12.00				12.45							
				X		X	X					X	X	X	X
MBANDAKA	a.		15.00	13.00		14.05	13.45					13.15	13.55		14.15
	d.		15.45	13.30		14.50	14.15					13.45	14.40		15.00
INONGO	a.			14.35											
	d.			15.00											
KINSHASA	a.		17.40	16.40		18.30	16.45	16.35		18.30		15.55	16.35	16.30	16.55

KINSHASA - NIOKI - INONGO & V.V.										
QC488	QC482	QC489	QC488	QC488	AIR CONGO	QC488	QC483	QC489	QC488	QC488
DC-3	DC-3	DC-3	DC-3	DC-3		DC-3	DC-3	DC-3	DC-3	DC-3
T	T	T	T	T		T	T	T	T	T
1	2	3	4	6		1	2	3	4	6
10.30	09.30	12.00	11.30	10.30	d. KINSHASA	a. 16.30	15.25	17.20	17.30	16.30
		X	X			11		11	11	
11.40	10.40		12.40	11.40	a. BANDUNDU	d. 15.25	14.20	16.15	16.25	15.25
12.10			13.10	12.10	d. a. 14.55			15.45	15.55	14.55
12.40			13.40	12.40	a. NIOKI	d. 15.15		14.45		
13.10			14.10	13.10	d. a.					
13.40		13.00	14.40	13.40	a. INONGO	d. 14.10		14.15	15.10	14.10



6

KINSHASA - LODJA - KINDU - KIGALI & V.V.																			
QC890 DC-3	QC492 DC-3	QC890 DC-3	QC480 DC-3	QC434 DC-6	QC480 DC-3	QC480 DC-3	QC428 DC-4	AIR CONGO				QC891 DC-3	QC437 DC-6	QC429 DC-4	QC891 DC-3	QC493 DC-3	QC481 DC-3	QC481 DC-3	QC481 DC-3
T	T	T	T	F/T	T	T	T	T	T	T	F/T	T	T	T	T	T	T	T	
1	3	3	4	5	6	6	7	1	1	2	3	3	4	6	6	6	6		
	05.30 ☞		07.00 ☞	07.30 ☞	14.00 FROM	14.00 FROM	07.00 ☞	d. KINSHASA a.		16.35 	19.00		16.50 	10.45	17.45	17.45			
11.10 X		12.45 X		X	17/6 to 15/7	19/8 to 16/9		d. LULUABOURG d.	14.20 X	15.30 14.45 X	X	12.10			FROM 17/6 to 15/7	FROM 19/8 to 16/9			
12.30	10.20	14.05						a. LODJA d.	13.00			10.50	14.35						
			08.45				X	a. KINDU d.			16.15 15.30								
					15.45	15.45		a. KIKWIT d.						09.15	16.15	16.15			
			12.30 13.30				14.30	a. GOMA d.		12.30 11.30	14.00								
			14.10					a. KIGALI d.		10.50									

KINSHASA - KIKWIT - LULUABOURG - MBUJI-MAYI																	
AIR CONGO		QC448 DC-4	QC896 DC-4	QC472 DC-4	QC470 DC-4	QC472 DC-4	QC895 DC-3	QC480 DC-3	QC470 DC-4	QC446 DC-6	QC474 DC-4	QC896 DC-3	QC442 DC-3	QC444 DC-3	QC440 DC-4	QC470 DC-4	QC444 DC-3
T	T	T	T	T	T	T	T	T	T	F/T	T	T	T	T	T	T	T
1	1	1	1	2	2	2	2	3	3	3	4	5	5	5	6	7	7
KINSHASA	d.	09.00		10.00	09.00	10.30		07.30 ☞	10.00	11.00	06.30 ☞		06.30 ☞	09.00	11.00	08.00 ☞	08.30 ☞
KIKWIT	a. d.			FROM 19/6 to		FROM 20/6 to	12.45 X	09.15		FROM 14/6 to			08.15 08.45	10.45 11.15	X	X	10.15 10.45 12.55
TSHIKAPA	a. d.	12.15 13.00		11/9		12/9				13/9			(X)	13.25			
BANDUNDU	a.						13.50				X						
LULUABOURG	a. d.	13.45 14.45		X	X	X			X	14.10 11.15		10.15 11.15	12.00	11.30	14.45		
MBUJI-MAYI	a.	15.20	14.05	13.05	14.35				14.05		11.50	12.40				12.05	

LUBUMBASHI - KISANGANI - KINDU - KALIMA & V.V.													
QC852 DC-3	QC810 DC-3	QC856 DC-3	QC850 DC-3	QC808 DC-4	QC860 DC-6	* AIR CONGO		QC851 DC-3	QC853 DC-3	QC857 DC-3	QC811 DC-3	QC807 DC-4	QC861 DC-6
T	T	T	T	T	F/T			T	T	T	T	T	F/T
3	3	4	5	5	7			3	3	4	5	6	6
					06.30 ☺ 09.00	d. LUBUMBASHI	a.						16.00 X
						a. BUJUMBURA	d.						13.30
08.30		08.00	08.00			d. BUKAVU/KAMEMBE	a.	16.15	16.30	12.10			
	12.30 ☺			12.00 ☺		d. KISANGANI	a.		X		11.45	12.30 X	
10.00 10.30 X	14.15	09.30 10.00	09.30	13.30 14.15 		a. KINDU	d.	14.45			10.00		
12.30				15.45		a. LULUABOURG	d.		13.15				
						a. GOMA	d.					10.30	
		10.30				a. KALIMA	d.			11.00			

MBUJI-MAYI - LULUABOURG - KIKWIT - KINSHASA																
* AIR CONGO	QC897 DC-3	QC443 DC-3	QC473 DC-4	QC471 DC-4	QC894 DC-3	QC475 DC-4	QC473 DC-4	QC481 DC-3	QC441 DC-6	QC471 DC-4	QC897 DC-4	QC449 DC-4	QC445 DC-3	QC441 DC-4	QC445 DC-3	QC475 DC-4
	T	T	T	T	T	T	T	T	F/T	T	T	T	T	T	T	T
	1	1	1	1	2	2	2	3	3	3	4	4	5	6	7	7
MBUJI-MAYI	d.	10.00		15.05	16.20		14.15	15.35		15.05	13.00					13.15
LULUABOURG	a. d.	10.40 14.50	FROM 19/6 to			14.50 15.35	FROM 20/6 to		15.00		13.35 14.30		15.45			13.50 14.35
BANDUHDU	d.		11/9 (x)		11.10		12/9		FROM 14/6 to 13/9							
TSHIKAPA	a. d.										15.15 16.00		14.00		13.30	
KIKWIT	a. d.	15.20 15.50 			12.15			09.45					14.00 14.30 		13.30 14.00 	
KINSHASA	a.	17.20	17.00	18.15		17.05	17.30	11.15	16.05	17.00		17.00	16.00	17.15	15.30	16.05

KINSHASA - LULUABOURG - KALEMIE - LUBUMBASHI

AIR CONGO	QC410	QC440	QC871	QC410	QC887	QC414	QC885	QC863	QC410	QC873	QC869	QC410
	B.707	DC-4	DC-4	B.707	DC-4	DC-4	DC-4	DC-4	B.707	DC-3	DC-3	B.707
	F/Y	T	T	F/Y	T	T	T	T	F/Y	T	T	F/Y
	1	3	3	3	3	4	4	4	5	5	6	7
KINSHASA	d.	08.05 	06.30 ☺	09.05 		05.30 ☺			07.00 ☺			10.35 X
LULUABOURG	a. d.		10.15 ↓									
MBUJI-MAYI	a. d.		11.15			09.35 10.35				13.15		
KAMINA	a. d.					11.50 ↓	12.30					
KALEMIE (EX. ALBERTVILLE)	d.	JET		JET				13.15	JET		12.30 X	
MANONO	a. d.										13.40 14.10	
KOLWEZI	d.		X		16.50		X	X		X		
LUBUMBASHI	a.	11.25	14.00	12.25	17.40		14.00	15.25	10.20	16.30	16.05	13.55

BUJUMBURA - BUKAVU/KAMEMBE - GOMA

AIR CONGO	QC844	QC840	QC842	QC844	QC844	QC846	QC842	QC861	QC842	
	DC-3	DC-3	DC-3	DC-3	DC-3	DC-3	DC-3	DC-6	DC-3	
	T	T	T	T	T	T	T	F/T	T	
	1	1	2	4	5	5	6	6	7	
BUJUMBURA	d.		15.30	10.45				08.00	13.30	13.00
LUBUMBASHI	a.							X 16.00		
BUKAVU/KAMEMBE	a. d.	11.00	16.10	11.25 11.55	12.40	11.30	14.20	08.40 09.10		13.40 14.10
GOMA	a.	11.35		12.30	13.15	12.05	14.55	09.45		14.45

LUBUMBASHI - KALEMIE - LULUABOURG - KINSHASA

AIR CONGO	QC872	QC411	QC886	QC411	QC862	QC874	QC411	QC441	QC868	QC884	QC415	QC411
	DC-3	B.707	DC-4	B.707	DC-4	DC-4	B.707	DC-4	DC-3	DC-4	DC-4	B.707
	T	F/Y	T	F/Y	T	T	F/Y	T	T	T	T	F/Y
	1	1	3	3	4	5	5	5	6	6	6	7
LUBUMBASHI	d.	06.30 ☹	16.50 X	15.30 	20.00 X	10.00	10.00	20.00 X	☹	08.00	11.00	18.30 X
KOLWEZI	a.			16.20							(●)	(●)
MANONO	a. d.								10.05 10.35			
KALEMIE (EX.ALBERTVILLE)	a.		JET		JET	12.15		JET	11.45			JET
KAMINA	a. d.									12.20	13.00	X
MBUJI-MAYI	a. d.	09.30					12.20 13.30					14.15 15.00
LULUABOURG	a. d.					14.05		15.00 				
KINSHASA	a.		18.15		21.25			21.25	16.30		16.55	19.55

GOMA - BUKAVU/KAMEMBE - BUJUMBURA

AIR CONGO	QC843	QC845	QC845	QC845	QC847	QC843	QC860	QC899	QC845
	DC-3	DC-3	DC-3	DC-3	DC-3	DC-3	DC-6	DC-3	DC-3
	T	T	T	T	T	T	F/T	T	T
	1	2	4	5	5	6	7	7	7
GOMA	d.	12.15	13.30	14.00	13.15	16.30	11.00		15.30
BUKAVU/KAMEMBE	a. d.	12.50 13.20	14.05	14.35	13.50	17.05	11.35 12.05	11.20	16.05
LUBUMBASHI	d.						06.30 ☹		
BUJUMBURA	a.	14.00				12.45	09.00	12.00	



ACCRA - ADDIS-ABEBA - ADEN - ALGER - AMSTERDAM - ANKARA - ATHENES - BALTIMORE - BANGKOK - BA
BOSTON - BRISTOL - BUCAREST - BUDAPEST - BUENOS AIRES - BULAWAYO - CAIRO - CALCUTTA
DOUALA - DUBLIN - DUSSELDORF - EDMONTON - FORT-DE-FRANCE - FRANCFORT - GENEVE - GLASGO
LIVINGSTONE - LONDRES - LOS ANGELES - LUXEMBOURG - LYON - MALTE - MANCHESTER - MAN
NEW YORK - NICE - NICOSIE - ORAN - PALERME - PALMA DE MAJORQUE - POINTE-A-PITRE - PORT-HAR
SOFIA - SOUTHAMPTON - STOCKHOLM - STRASBOURG - STUTTGART - TANGER - TEHERAN - TE
WASHINGTON - ZAGREB - ZURICH



A PARTIR DE SES ESCALES
DE BRUXELLES, ROME ET PARIS
LAGOS, DUSAKA ET NAIROBI

AIR CONGO

ASSURE, LE MEME JOUR,
LA CORRESPONDANCE DIRECTE AVEC
LES PRINCIPALES VILLES DU MONDE :

ONE - BALE - BENGHAZI - BEYROUTH - BELGRADE - BERLIN - BIRMINGHAM - BOGOTA - BOMBAY - BORDEAUX
CARACAS - CASABLANCA - CHICAGO - COLOGNE - CONSTANTINE - COPENHAGUE - DAMAS - DAR ES-SALAM
HAMBOURG - HELSINKI - ISTANBUL - JERSEY - JOHANNESBURG - KITWE - LAS PALMAS - LIMA - LISBONNE
MARRAKECH - MARSEILLES - MEXICO - MILAN - MOMBASA - MONTREAL - MOSCOU - MUNICH - NAPLES
- PRAGUE - QUITO - RIO DE JANEIRO - SALISBURY - SAN FRANCISCO - SAO PAULO - SHANNON - SINGAPOUR
- TOKYO (route du Pôle) - TORONTO - TRIPOLI - TUNIS - VANCOUVER - VENISE - VIENNE - VARSOVIE

KINSHASA - MOANDA & V.V.				
QC454 DC-3	QC454 DC-4	AIR CONGO	QC455 DC-3	QC455 DC-4
T	T		T	T
2	5		2	5
08.30	08.30	d. KINSHASA	a. 16.30	16.20
09.45	09.30	a. MATADI	d. 15.15	15.20
10.15	10.15	d.	a. 14.45	14.35
10.55	10.50	a. MOANDA	d. 14.00	14.00



KINSHASA - LUBUMBASHI - LUSAKA & V.V.										
QC440 DC-4	QC410 B.707	QC882 DC-4	QC440 DC-4	QC457 DC-6	AIR CONGO	QC441 DC-4	QC883 DC-4	QC411 B.707	QC456 DC-6	QC441 DC-4
T	F/Y	T	T	F/T		T	T	F/Y	F/T	T
3	5	5	6	6		5	5	5	6	6
				13.45	d. LAGOS a.					
				X					12.30	
06.30	07.00		11.00	18.30	a. KINSHASA d.	16.30		21.25	X	17.15
			X		d.			X		
10.15			14.45		a. LULUABOURG d.	15.00		JET		15.45
	10.20				a. LUBUMBASHI d.					
		12.00			d.			20.00		
		X			a.		18.00			
		12.50			a. N'DOLA d.		17.10			
		13.30			d.		16.35			
		14.35			a. LUSAKA d.		15.30			

ENTEBBE		- BUJUMBURA & V.V.				
SN335 DC-4	SN335 DC-6	AIR CONGO		SN336 DC-4	SN336 DC-6	
T	T			T	T	
1	6			2	6	
09.30	11.30	d.	ENTEBBE	a.	10.30	10.15
▼	▼			▼	▼	
▲						
09.50		a.	KIGALI			
10.30		d.		☕	☕	
▼						
▲	▲			▲	▲	
11.15	12.00	a.	BUJUMBURA	d.	07.45	07.45

LAGOS		- KINSHASA			- BUJUMBURA			- NAIROBI & V.V.			
WT830 F.27	EC362 F.27	QC430 DC-6	QC457 DC-6	QC420 DC-6	AIR CONGO		QC421 DC-6	WT831 F.27	EC361 F.27	QC431 DC-6	QC456 DC-6
T	T	F/T	F/T	F/T			F/T	T	T	F/T	F/T
1	4/6	4	6	7			1	1	4/6	5	6
08.00			13.45		d.	LAGOS	a.		20.15		12.30
10.15			×		a.	DOUALA	d.		18.10		×
10.45					d.		a.		17.35		
▼									▲		☕
14.05			18.30		a.	KINSHASA	d.		14.45		☕
		07.40		06.15	d.		a.	18.55		18.40	→ 08.00
		☕	×	☕							
		12.40			a.	GOMA	d.			15.45	
		14.00			d.		a.			14.35	
				11.15	a.		d.	16.00			
				QC830 DC-6		BUJUMBURA		QC831 DC-6			
	12.00			12.30	d.		a.	14.45	10.45		
				×							
	14.30	16.20		15.00	a.	ENTEBBE	d.	14.15	10.15	14.15	
	15.30	17.00		15.45	d.		a.	13.30	09.15	13.30	
								▼		▼	
		▲		▲				×		×	
	17.00	18.30		17.15	a.	NAIROBI	d.	12.00	07.45	12.00	

		BUKAVU/KAMEMBE		- KIGALI		- BUJUMBURA	
* AIR CONGO		QC841 DC-3	QC858 DC-3	QC867 DC-3	QC833 DC-6	QC841 DC-3	QC841 DC-3
		T	T	T	F/T	T	T
		2	4	4	5	6	7
BUKAVU/KAMEMBE	d.	06.45	07.00			06.45	09.00
			☕				
KALEMIE (EX. ALBERTVILLE)	a. d.		08.45	09.15			
KAMINA	a.			11.25			
KIGALI	d.				14.50 		
BUJUMBURA	a.	07.25			15.40	07.25	09.40

		EUROPE		- AFRIQUE		- AFRICA			
* SABENA		SN511 B.707	SN519 B.707	QC311 B.707	SN517 B.707	QC301 B707	SN529 B.707	SN521 B.707	SN509 B.707
		F/Y	F/Y	F/Y	F/Y	F/Y	F/Y	F/Y	F/Y
		7	1	2	3	4	5	5	6
BRUXELLES	d.	20.25	11.30	22.05	23.40	20.25	20.25	21.15	22.05
PARIS	a. d.	X	X		X	21.15 22.00	X	X	
GENEVE	a. d.	21.35 22.35		↓		↓		FROM 2/6 to 31/10	
ROME	a. d.			01.05 02.05		↓			
MADRID	a. d.		13.40 14.30	A I R +		A I R	22.35 23.35		
ATHENES	a. d.			c		X			02.15 03.15
KANO	a. d.		19.00 19.50	o n c	☕	o n c	☕	☕	☕
KINSHASA	a.	06.05	22.45 X	07.50	07.40	05.45	06.25	05.15	08.35
		QC410		QC410	SN327	QC410	SN329		QC410
	d.	08.05		09.05	08.40	07.00	07.25		10.35
LUBUMBASHI	a.				☕	☕	☕		X
		11.25		12.25		10.20			13.55
JOHANNESBOURG	a.								
					13.20		12.05		
		1	2	3	4	5	6	6	7

CARGO

KINSHASA			GOMA			LUBUMBASHI & V.V.		
QC228 DC-4	QC210 DC-4	QC228 DC-4	★ AIR CONGO			QC229 DC-4	QC211 DC-4	QC229 DC-4
2	4	5				2	4	5
04.00	05.45	04.00	d.	KINSHASA	a.	16.45	17.50	16.45
10.30		10.30	a.	GOMA	d.	13.00		13.00
	11.55		a.	LUBUMBASHI	d.		14.00	



TOUS LES HORAIRES SONT EXPRIMES EN HEURES LOCALES ET SONT SUSCEPTIBLES DE MODIFICATIONS SANS PREAVIS

ALL TIMETABLES SHOWN ARE IN LOCAL TIMES AND ARE SUBJECT TO ALTERATION WITHOUT PREVIOUS NOTICE

RESEAU PETITS PORTEURS - SMALL AIRCRAFT NETWORK



KINSHASA/N'DOLO – BOMA – MASI-MANIMBA – IDIOFA & V.V.

QC900	QC902	QC904	QC908	QC910	QC912	QC914	AIR CONGO									
1	2	2	3	4	5	6	1	2	2	3	4	5	6			
08.00	08.00	08.00	08.00	08.00	08.00	08.00	d.	KINSHASA	a.	11.15	10.40	16.00	11.15	16.15	12.35	11.15
09.15			09.15	09.15		09.15	a.	BOMA	d.	10.00			10.00	15.00		10.00
	09.10				09.15	09.30	a.	KENGE	d.		09.30				11.20	
		09.20			10.00		d.	MASI-MANIMBA	d.			14.40			10.30	
		09.40					d.		a.			14.20				
		10.10					a.	LEVERVILLE	d.			13.50				
		10.30					d.		a.			13.30				
		*					a.	KIKWIT *	d.			13.15				
		10.45					d.		a.			12.45				
		11.15					a.	IDIOFA	d.			12.15				
		11.45														

BUJUMBURA – BUKAVU/KAMEMBE – KIGALI – BUNIA & V. V.

QC958	QC954	QC954	QC954	QC952	QC992	AIR CONGO						QC959	QC955	QC955	QC955	QC953	QC993	
1	1	3	5	6	7	1	1	3	5	6	7	1	1	3	5	6	7	
					09.30	d.	BUJUMBURA	a.										11.30
07.00	09.30	09.30	09.30	07.00		d.	BUKAVU/KAMEMBE	a.	11.30	11.30	11.30	11.30	11.30	11.30	14.00			
07.40				07.40		a.	GOMA	d.	10.50							13.20		
08.00				08.00		d.		a.	10.35							13.05		
09.10				09.10	09.25	a.	BENI	d.	09.25							11.55		
				09.25		d.		a.								11.40		
	10.20	10.20	10.20			a.	SHABUNDA	d.		10.40	10.40	10.40						
					10.20	a.	KIGALI	d.										10.40
				10.15		a.	BUNIA	d.								10.50		



LUBUMBASHI – KOLWEZI – KAPANGA – SANDOA & V.V.

QC972	QC996	QC996	QC970	AIR CONGO		QC973	QC997	QC997	QC971
0	0	0	0			0	0	0	0
3	4	5	6			3	4	5	6
07.30			08.00	d.	LUBUMBASHI a.	16.10			15.40
08.40			09.10	a.	KOLWEZI d.	15.00			14.30
08.50			09.25	d.		14.50			14.15
	11.15	07.00		d.	BUJUMBURA a.		15.45	17.45	
			10.25	a.	KISENGE d.	13.50			
			10.40	d.		13.40			
	11.45	07.30		a.	BUKAVU/KAMEMBE d.		15.15	17.15	
			11.10	a.	DILOLO d.	13.10			
			11.55	d.		12.30			
10.35				a.	KAPANGA				
10.45				d.					
11.35			12.40	a.	SANDOA d.	11.45			12.55

LULUABOURG – LUSAMBO – LODJA – TSHIKAPA & V. V.

QC938	QC938	QC935	QC932	AIR CONGO		QC939	QC934	QC939	QC933
0	0	0	0			0	0	0	0
1	3	3	5			1	3	3	5
08.30	08.30		08.30	d.	LULUABOURG a.	10.40		13.50	13.00
09.25	09.10			a.		09.45		13.10	
	QC934				LUSAMBO d.			QC935	
	09.30			d.				12.50	
		11.20		d.	LODJA a.	11.00			
	10.10	11.50		a.	TSHUMBE d.	10.30	12.10		
			09.15	a.					12.15
			QC940		LUIZA d.				QC941
			09.35	d.					11.55
			10.35	a.	TSHIKAPA d.				10.55

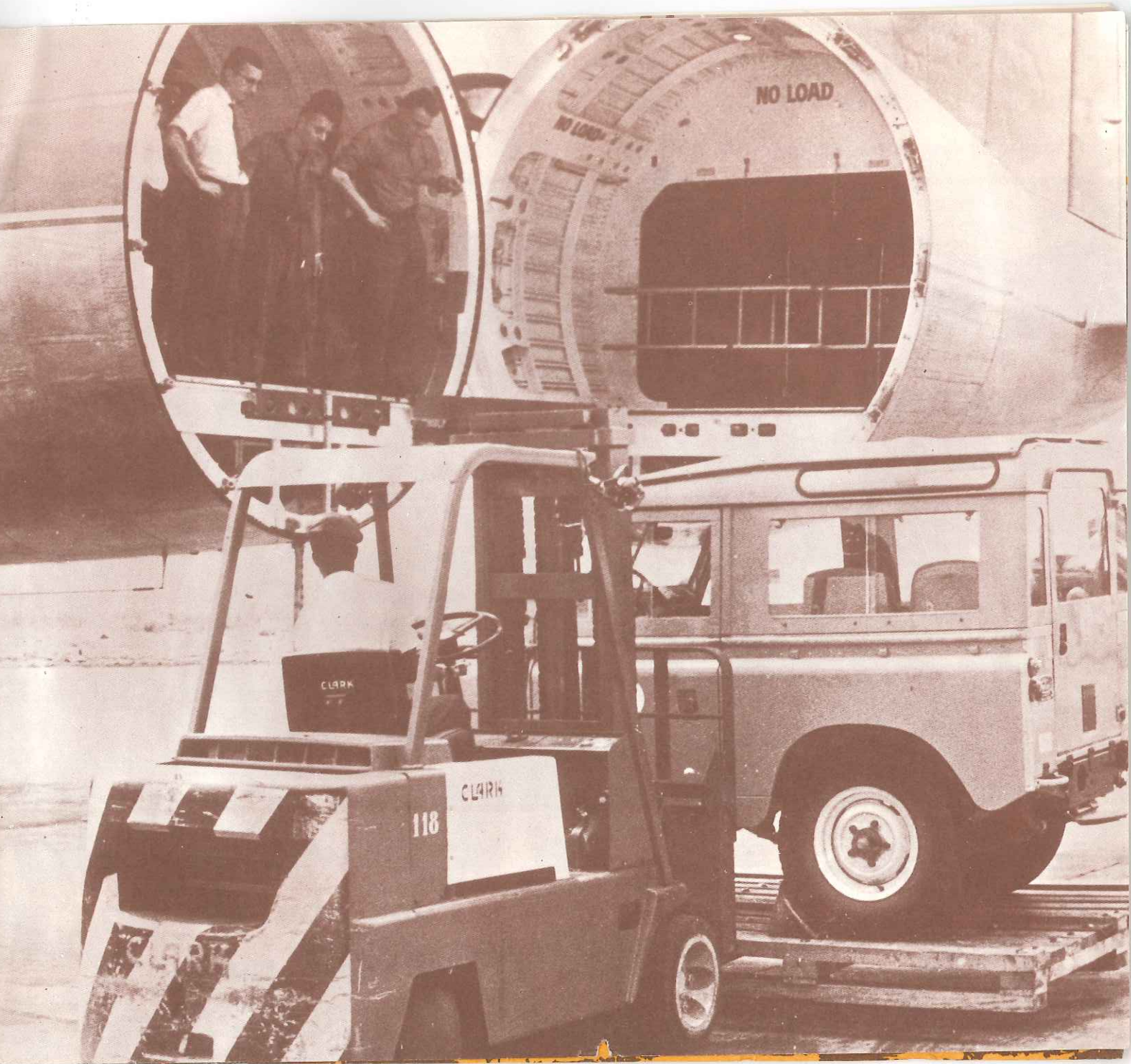
LUBUMBASHI – LUBUDI – KAMINA – KANIAMA & V. V.

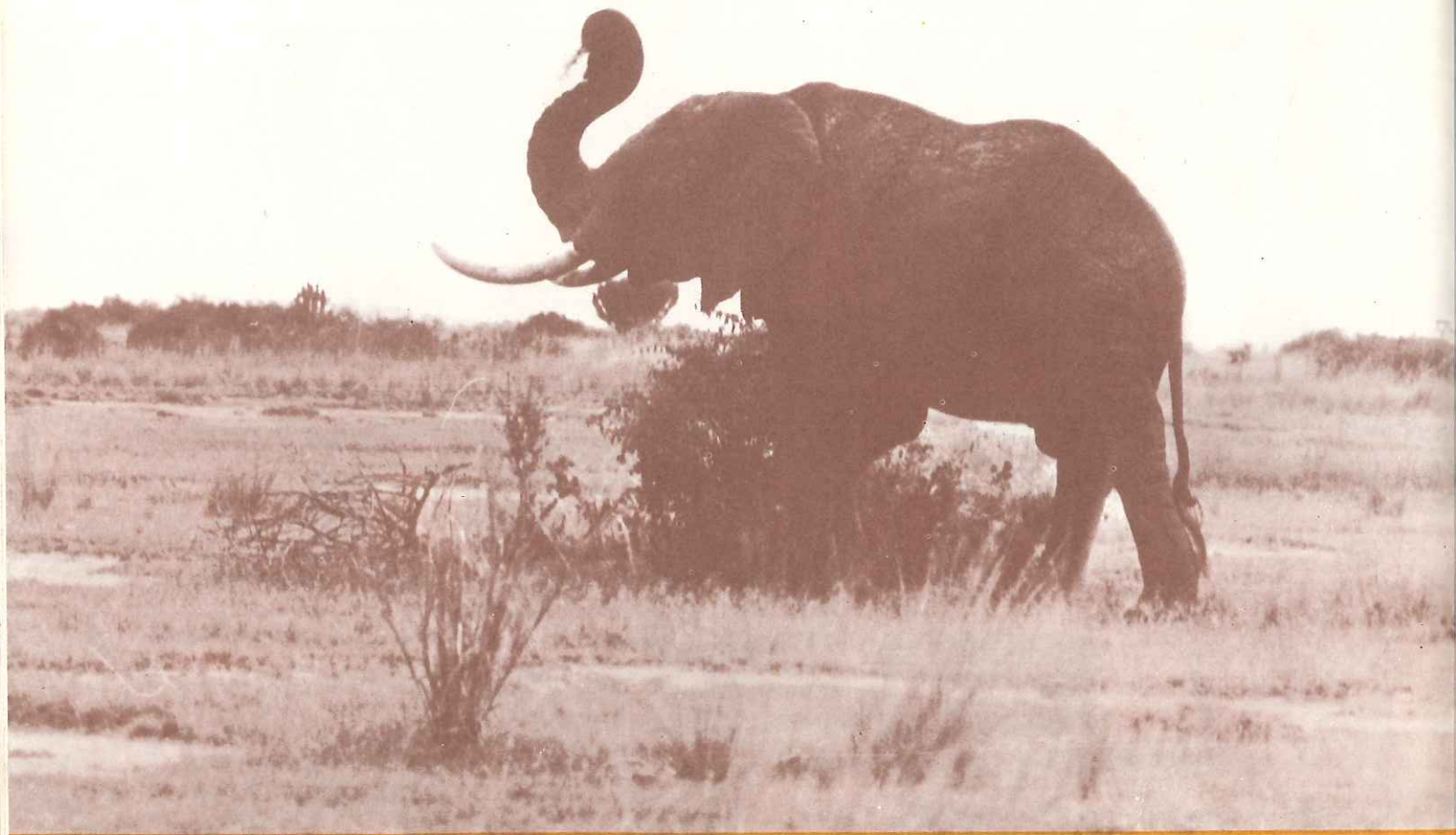
QC976	QC956	QC978	* AIR CONGO		QC977	QC957	QC979
②	②	②			②	②	②
2	4	5			2	4	5
09.00		08.30	d.	LUBUMBASHI	a.	13.25	16.20
	09.00		d.	BUKAVU/KAMEMBE	a.	11.55	
10.10		09.40	a.	LUBUDI	d.		15.10
10.25		09.55	d.		a.		14.55
		10.25	a.	LUENA	d.		14.25
		10.40	d.		a.		14.10
	10.20		a.	KASONGO	d.	10.35	
11.15		11.10	a.	KAMINA	d.	11.45	13.40
		11.40	d.		a.		13.25
		12.25	a.	KANIAMA	d.		12.40

LUBUMBASHI – BAUDOINVILLE – KONGOLO – PWETO & V. V.

QC980	QC981	QC974	* AIR CONGO		QC980	QC981	QC975
②	②	②			②	②	②
1	2	4			1	2	4
08.00		08.00	d.	LUBUMBASHI	a.	14.15	12.50
	09.00		d.	KALEMIE	d.	11.45	
		09.25	a.	MITWABA	a.	11.15	
		09.35	d.				
10.10			a.	KAMIPINI	d.	10.30	
10.25			d.		a.	10.20	
10.45	09.45		a.	BAUDOINVILLE	d.	10.00	
11.00			d.				
11.45			a.	KALEMIE	a.	16.15	
12.15			d.				
13.30			a.	KONGOLO	d.	15.00	
13.40			d.		a.	14.50	
14.10			a.	KABALO	d.	14.20	
				KASENGA	d.		11.50
					a.		11.40
				KILWA	d.		11.10
					a.		11.00
		10.15	a.	PWETO	d.		10.25







**...et si vous faisiez
un safari photo
au PARC ALBERT ?**

**...what do you
think about taking
a safari picture in
ALBERT PARK ?**