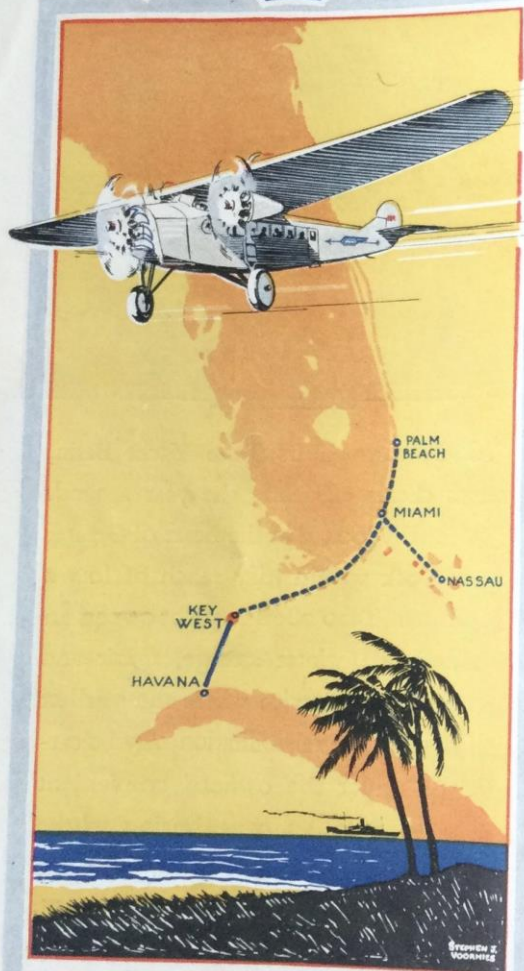
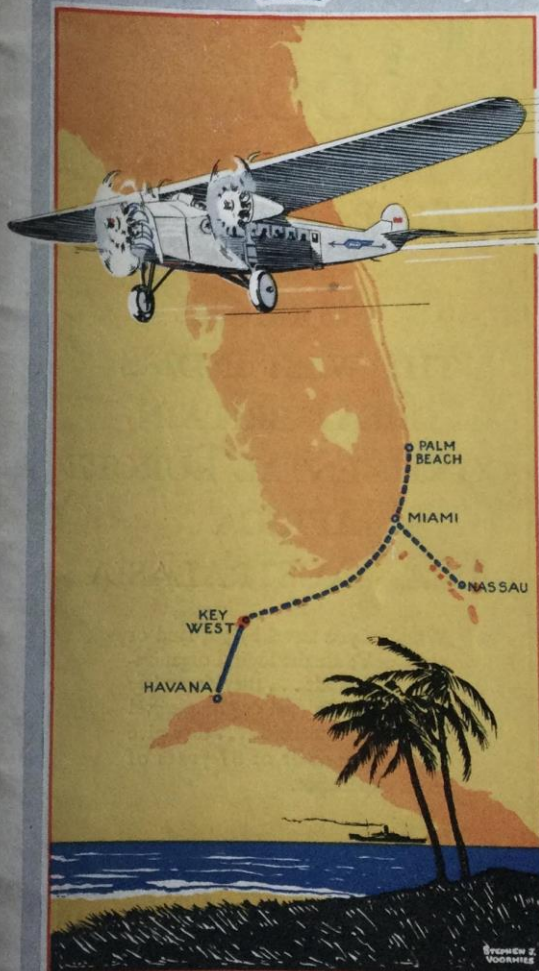


THE AIR-WAY TO HAVANA



PAN AMERICAN AIRWAYS, INC.
PERSHING SQUARE BUILDING
NEW YORK

THE AIR-WAY TO HAVANA



PAN AMERICAN AIRWAYS, INC.
PERSHING SQUARE BUILDING
NEW YORK



COOK'S
are AGENTS for
Air Transportation

in
AMERICA
THE WEST INDIES
GREAT BRITAIN
CONTINENTAL EUROPE
AFRICA
ASIA · AUSTRALASIA

Whether you travel by air, land or sea, Cook's are the logical organization to consult . . . they formulate plans for individual or group travel in unlimited variation . . . they give you the benefit of 87 years of travel experience.

Enquiries are cordially invited

THOS. COOK & SON

New York Philadelphia Boston Baltimore Washington
Chicago St. Louis San Francisco Los Angeles
Portland, Ore. Toronto Montreal Vancouver

175 OFFICES THROUGHOUT THE WORLD



Passengers boarding Pan American Airliner

ALL ABOARD!

Motors drum pleasantly, spinning glinting propellers in the early morning sunshine, as a little group emerges from the Passenger Station and strolls leisurely down the path.

Those who are making their first trip by air are wont to exclaim at the size of the airliner—its sturdy yet graceful lines that impart such a definite impression of power and reliability. The interior of the plane, with its spacious and luxuriously furnished cabin arouses admiration. Wicker chairs beautifully upholstered are ranged four in a row on either side of the cabin—leaving ample leg room and a clear aisle up the center.

As the passengers settle themselves for the journey, the Assistant Pilot furnishes each with reading matter, inquires after individual comfort, then takes his place next to the Chief Pilot. There is a subdued distant roar, as the propellers begin to whirl faster and the plane taxis gently forward for the take-off. It gains speed. Some seasoned air traveler casually remarks—"We're off!", but were it not for the cessation of the rumble of the wheels on the ground, the fact that the plane had arisen would scarcely be noticeable.

The Pilot rises in a wide arc, and Key West with its white buildings slips gently away beneath. Meacham Field, where the plane took off, swings into view.

Pan American Airways, Inc.

Planes are operated with our

GASOLINE

STANDARD OIL COMPANY

INCORPORATED IN KENTUCKY

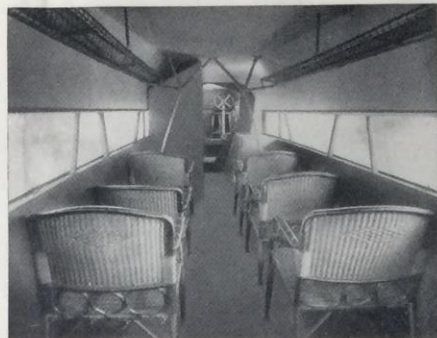
ECLIPSE

AVIATION ENGINE STARTERS AND
GENERATORS

All
PAN-AMERICAN AIRWAYS PLANES
are equipped with
"ECLIPSE" STARTERS

ECLIPSE MACHINE COMPANY
EAST ORANGE PLANT - EAST ORANGE, N.J.

Elmira, N. Y. Walkerville, Ont.



Interior of Pan American Airliner

This modern Airport was built by Pan-American Airways, Inc. A wild morass was converted into a completely equipped airdrome.

President Coolidge, on his visit to Havana, pronounced Meacham Field one of the finest Commercial Airports he had seen. It is the first official "Port of Entry" for international aircraft to be established in this country. Both here and at Camp Colombia Field, in Havana, trained Government Officials, are present to expedite clearance through Customs, Immigration and Public Health formalities. Automobile transportation between the Fields and centrally located points in Key West and Havana is provided by the Company.



Meacham Field—Pan American Airport—Key West, Fla.



The Fokker F-VII Trimotor, commercial type, which was flown over the North Pole by Commander Byrd

Safety—in commercial air transportation, the prime consideration is *safety*. And in military aviation, it is *performance*. These essential points explain the world-wide reputation of Fokker Aircraft and their remarkable record in both commercial and military service.

Historic Fokker Flights

- 1923 First Non-stop Flight across American Continent
- 1924 First Flight from Holland to Dutch East Indies
- 1925 First in Ford Reliability Tour
- 1926 First to Fly over North Pole
- 1927 First to Fly from United States to Hawaii
- 1927 First Trimotor to Fly across Atlantic Ocean

Fokker Aircraft are used throughout the world. They have been selected by governments and commercial operators for service in the United States and other countries as follows:

| | | |
|---------------------|-------------------|-------------|
| Argentina | Dutch East Indies | Italy |
| British East Africa | England | Norway |
| Belgium | Finland | Poland |
| Bolivia | Germany | Rumania |
| Canada | Holland | Russia |
| Cuba | Honduras | Spain |
| Denmark | Hungary | Switzerland |

Atlantic Aircraft Corporation

Builders of all types of Airplanes, Seaplanes, Flying Boats and Amphibians.

Factory and Flying Field
Teterboro Airport
Hasbrouck Heights, N. J.

New York Office
110 East 42nd Street

Fokker "Universal," powered with Wright Whirlwind engine; a commercial transport with cabin seating 4 to 6 passengers



fokker
USA



Pan American Airport at Havana, Cuba

The Airliner straightens her course, heading out to sea—pink and white coral reefs are discernable through the clear blue water of the Gulf. The little island Key becomes an emerald set in blue, studded with tiny pearls of white houses.

Ahead as far as the eye can see are snow-capped waves in endless motion, sparkling in the sunlight. A refreshing breath of cool air pervades the cabin, as a seasoned air passenger slides back the window next to his chair. Others soon follow suit, finding the operation absurdly simple and the window easily adjusted to meet individual taste.

Above are corded nets in which small articles of apparel may be placed—hats, top-coats, sticks, brief cases and other things that the traveler may wish to have at close hand.

There is a compartment for heavier luggage aft, also a lavatory and storage space for mail. Pan American Airways, Inc., holds exclusive contracts for this service. The Post Office Department requires strict maintenance of schedules and exercises a general supervision over the Company's operations, in order to protect and safeguard the mails.

But to return to the flight—Passengers aboard this modern Magic Carpet converse freely, untroubled by the muffled roar of the engines. One points out far below a six-masted barkentine, reminiscent of the days of Captain Kidd—another sights the car ferry, which appears at the half-way point in the air journey, on her run between Havana and Key West.

On Pan-American Airways ~

... you may be assured that your comfort and safety have been considered.

For the latest type Fokker Tri-Motor planes making the passage between Havana and Key West have been equipped with these

PIONEER INSTRUMENTS

Altimeter
Magnetic Compass
Oil Pressure Gauge
Air Speed Indicator
Earth Inductor Compass
Turn and Bank Indicator

PIONEER INSTRUMENT COMPANY
754 LEXINGTON AVE. BROOKLYN NEW YORK

Profitable Airports

WE will help you to select a site, plan, design and supervise the construction of your airport.

OUR technical organization offers economies and advantages for profit obtainable for your airport as an integral link in a chain of airports under unified management.

American Airports Corporation

527 FIFTH AVENUE
NEW YORK

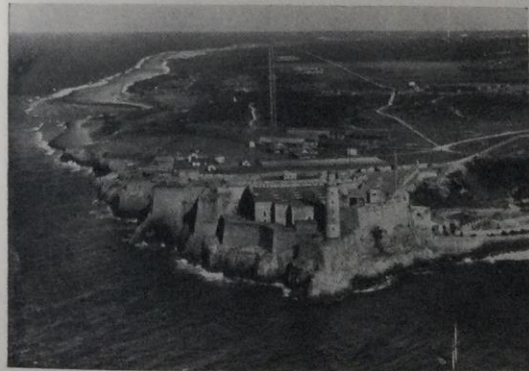


Havana Shoreline from the Air

The White-Uniformed Assistant Pilot emerges from the cockpit and cheerfully supplies interesting information to those who are taking their first flight. It is learned that the load carried by the plane is checked three times before the take-off, and limited to the point which enables any one of the three engines alone, to keep the plane in the air until one shore or the other is reached.

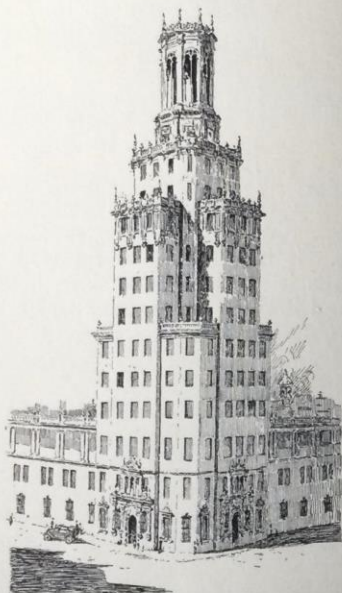
Suddenly land is sighted—the coast of Cuba—and soon Havana Harbor swings into view, with Morro Castle guarding its narrow entrance, and the famous Malecon Drive stretching along the opposite shore, and all around a sea of white houses. Havana from the air—a sight not soon forgotten

Surely a visit to Havana, the enchanted city, the Monte Carlo of the New World, is in itself a sufficient lure to the traveler, but add to this the fascination of making the journey over the turbulent Straits of Florida by Airliner, and the urge to go becomes irresistible.



Historic Morro Castle from the Air

International Telephone Service



Headquarters Building in Havana

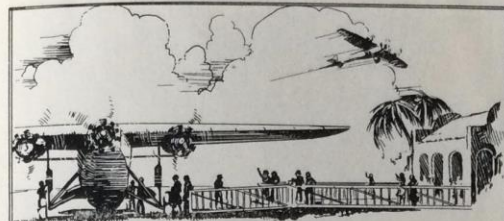
of the

Cuban Telephone Company

An Associated Company of the

INTERNATIONAL
TELEPHONE AND TELEGRAPH
CORPORATION

From any telephone in Cuba,
immediate communication may
be had with the United States,
Mexico, Canada and Europe



Route and Schedule

A regular daily passenger service is maintained between Key West and Havana in connection with the North and Southbound sections of the Havana Special. The following schedule was made effective January 16, 1928, but is subject to change without notice.

Southbound

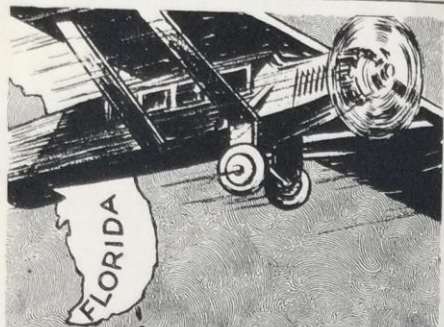
| | |
|--|-----------|
| Havana Special Arrives Key West | 7.00 A.M. |
| Pan American Plane leaves Meacham Field | 8.00 A.M. |
| Pan American Plane arrives Havana | 9.10 A.M. |

Northbound

| | |
|---|-----------|
| Pan American Bus leaves Havana Office, Sevilla-Biltmore Arcade | 3.00 P.M. |
| Pan American Plane leaves Camp Columbia Field | 4.00 P.M. |
| Pan American Plane Arrives Key West | 5.20 P.M. |
| Havana Special leaves Key West | 6.30 P.M. |

Passengers arriving on the Havana Special should be called in time to leave train promptly upon arrival and report immediately to Pan American Airways, Inc., office in La Concha Hotel Building to fill out necessary clearance documents. A bus leaves the office at 7.30 A. M. for the field taking all passengers holding tickets for the morning flight.

The fare between Key West and Havana is \$50.00 and includes 30 lbs. of baggage with each ticket. Excess baggage will be carried at 25¢ per lb. when the capacity of the plane permits. Trunks may be checked by steamer upon presentation of claim check to Pan American Airways' Agent at Key West.



**Where Safety and
Efficiency are
Paramount**

MANY of the large aviation companies depend upon KENDALL PENZBEST Motor Oil for the safe and steady operation of their planes.

The same 100% Pure Pennsylvania oil used for lubricating high speed aviation engines is the basis of KENDALL PENZBEST Motor Oil for motor cars. In hot or cold weather — under every motor condition, KENDALL PENZBEST Motor Oil will give the super-service that only a 100% Pure Pennsylvania oil can give.

**KENDALL
PENZBEST
MOTOR OIL**



KENDALL REFINING CO.
Bradford, Pa., U.S.A.

CUBA

Reservations

As tickets will only be sold up to the capacity of the available equipment, it is important that reservations be made well ahead of time.

Pan American Airways, Inc., maintains ticket offices at the following locations:

Pershing Square Building
100 E. 42d St., New York, N. Y.
Telephone Caledonia 2363

La Concha Hotel Bldg., Key West, Fla.
Telephone 377

Sevilla Biltmore Arcade, Havana, Cuba
Telephone A—2222

Reservations must be paid for in advance to insure their being held until departure of plane.

Thos. Cook & Son, as agents, will accept bookings at any of their offices here and abroad.

Bookings may also be made through F. Irwin Davis, 102 Pearl St., Hartford, Conn., who is an authorized agent.

Special Flights from Havana

Pan American Airways, Inc., also operates sightseeing flights from Camp Columbia Field. Arrangements for such flights can be made at the Company's office in the Sevilla-Biltmore Arcade, Havana.



Presidential Palace at Havana from the Air

To Executives of Airlines

Rand McNally Service Will Solve Three of Your Problems

1. MAP SERVICE—Maps for air navigation, map tack systems for airport and office use, special maps for advertising purposes—there is a Rand McNally Map for your every need.
2. PASSENGER TICKET SERVICE—We excel in the planning and printing of air passenger tickets. To America's Airlines we guarantee the same complete ticket service that we have supplied for over sixty years to America's Railroads.
3. FOLDER AND TIME-TABLE SERVICE—Our time-table and advertising folder service includes the printing of distinctive, useful pieces, especially adapted to the needs of air transportation.

Plants in both Chicago and New York insure prompt service.

RAND McNALLY & COMPANY

NEW YORK
270 Madison Avenue

CHICAGO
536 S. Clark Street

The Newest Aircraft Compass

TYPE F
STAR
PATHFINDER
COMPASS



MOUNTS
FLUSH WITH
INSTRUMENT
BOARD

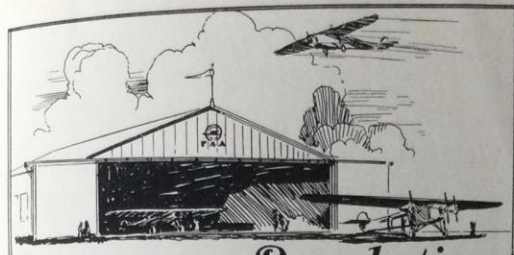
Every epochal flight of the past year has been achieved with the aid of one or more Consolidated Instruments—dependable products which are standard equipment on most American commercial aircraft.

CONSOLIDATED

Instrument Company of America, Inc.

41 East 42nd Street, New York

Altimeters, tachometers, oil pressure gauges, gasoline gauges, thermometers, air speed indicators, compasses, navigation lights, landing lights, dash lights, etc.



Passenger Regulations

1. Every passenger must be in possession of a valid ticket and if the flight is to a foreign country where passports are required, the passenger must provide himself with such a passport and have it properly vised. The company assumes no responsibility for attending to the existence or correctness of passports and visas.
2. The ticket is valid only for the flight, day, person and service specified therein, unless a special airplane is chartered by the passenger. The ticket is transferable only with the approval of the company.
3. Passengers must arrive at the airport of departure early enough before scheduled time of departure to enable passport, customs and luggage formalities to be completed.
4. The following are precluded from transport by aircraft:
 - (a) Persons of unsound mind, those suffering from contagious or infectious diseases, or persons under the influence of drink or drugs.
 - (b) Arms, ammunition, explosives or other inflammable articles liable to catch fire or otherwise endanger the airplane, passengers or cargo.
 - (c) Prohibited imports or goods the transport of which is officially prohibited above one of the countries flown over.
 - (d) Articles which may cause annoyance to passengers or which on account of their size, weight or other conditions are not suitable for transport by aircraft.
5. Children under three years of age accompanied by grown people are carried free of charge but are not entitled to sole occupancy of a chair. Minors will only be carried when they are in possession of a declaration of their legal guardian consenting to the flight under these conditions of carriage.
6. The Company reserves the right to refuse to carry any passenger or luggage on any flight. No claim for repayment of fare can be considered if the passenger does not arrive or arrives late for the flight booked. If a passage is cancelled before the flight, the fare will be refunded provided that the Company is notified not later than 24 hours before the scheduled time of departure. No refund will be made if a passage is cancelled later than as specified above, unless the reservation has been resold.

National Airway Terminals, Inc.

Combining

The Oldest Flying Service in the World
The Pioneer Airport Designers of America

offers

EXPERIENCED MANAGEMENT
SITE SELECTION, DESIGN, CONSTRUCTION
NEW PLANES SKILLED PILOTS

Licensed by Dept. Commerce

Profit by Unified Management in Our
System of Airports

National Airway Terminals, Inc.

292 Madison Avenue - - New York, N. Y.

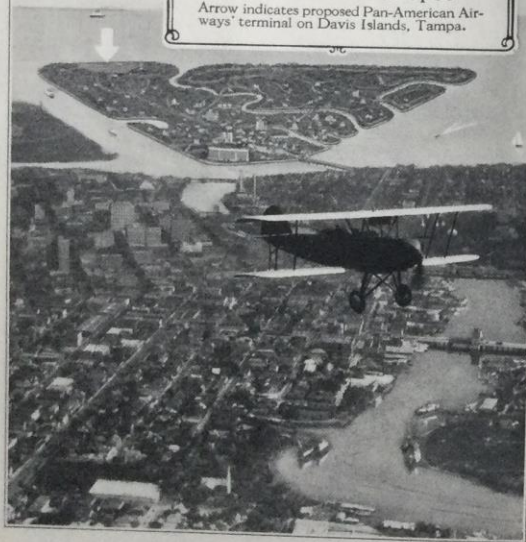
Caledonia 7390

DAVIS ISLANDS

Built by man in Tampa Bay, one-half mile
from Tampa's city hall.

Florida's Wonder Spot

Arrow indicates proposed Pan-American Air-
ways' terminal on Davis Islands, Tampa.



Col. Lindbergh Flying Pan American Airliner "General New" during Havana Conference

If a flight is cancelled by the Company on account of weather or for any other reason, the passenger shall be entitled to repayment of the whole fare. If the flight is uncompleted, the passenger shall be entitled to repayment of the fare for the non-flown mileage. Claim for repayment must be made within four weeks from the date of the ticket.

7. No responsibility in connection with the carriage of passengers or luggage is accepted by the Company, its agents or employees. A passenger making a flight in one of the Company's airplanes must agree to release the Company, its agents and employees from all claims for compensation arising from any damage that may occur to the passenger or his luggage directly or indirectly, and however caused while using an airplane or otherwise in connection with a flight. No passenger shall be entitled to compensation or have a claim against the Company on account of being excluded from a flight or in case of cancellation, delay or interruption of a flight.

8. Luggage in excess of the free allowance of 30 lbs. will be carried if the capacity of the plane permits and will be charged for at the published rate. Arrangements for the carriage of excess baggage should be made in advance.

9. Complaints should be made in writing to the head office of the Company. No action for damage can be brought by passengers after the termination of six months from the date of arrival at destination or of the conclusion of the flight.

10. The competent court for decision of all law suits in connection with passenger service shall be that of the country in which the head office of the company is located.

11. Where any compulsory legal conditions or regulations exist in any country, with which these transport conditions conflict, such compulsory legal conditions shall apply; but the conditions of transport herein contained shall remain effective insofar as they are not expressly overridden by any such compulsory legal conditions.

PASSPORTS AND INCOME TAX CLEARANCES

Going to Cuba:

Passports are not required of citizens of the United States or admissible aliens, entering Cuba from United States ports. Persons of the Chinese Race, regardless of citizenship, must have special permission of the Cuban Immigration Department before they will be admitted. Gypsies, regardless of nationality, will not be permitted to land in Cuba.

Income tax clearances are not required of citizens of the United States, but are required of aliens. This clearance or sailing permit must be secured from U. S. Income Tax Inspector at Port of departure. It is issued upon payment of income tax to inspector or upon the presentation of satisfactory evidence showing that the tax has been paid or that exemption is justified.

Returning from Cuba:

Citizens of the United States are not required to hold passports. As a precautionary measure, however, in order to avoid possible delay and facilitate re-entry into the United States, it is advisable for naturalized American citizens to have in their possession their final naturalization papers.

Aliens previously lawfully admitted for residence and now domiciled in the United States who wish to make a temporary visit to Cuba and return to the United States, should make application to the Commissioner General of Immigration, Washington, D. C., for a "Re-entry Permit," as without this document, or adequate proof of previous lawful admission for residence they may be unable to secure return booking and re-entry.

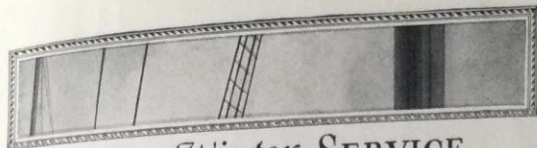
Citizens of other countries not mentioned above, must hold passports or immigration visas as required by the United States, and also be able to comply with all Government regulations respecting their entry into this country.

BOOKING PASSAGE FROM HAVANA TO U. S. PORTS

All passengers must have names entered on passenger list, secure baggage declarations, etc., at Pan American Airways office, Sevilla-Biltmore Arcade, Havana, Cuba, at least six hours prior to departure, as compliance with regulations makes it impossible to book passengers in Havana on the afternoon of the day of departure.

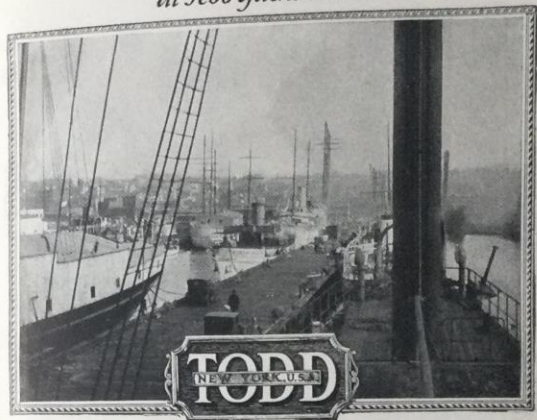
PLANT QUARANTINE REGULATIONS

Bouquets, plants, tree seeds, fruits and parts of plants are prohibited entry into the United States except by special Federal permit. Returning passengers must offer all plant material for inspection at Key West.



TODD Winter SERVICE

STORAGE - REPAIR - RECONDITIONING
at Tebo Yacht Basin



TODD, through its Tebo Yacht Basin, serves clients efficiently the year around.

Centrally located in the heart of Greater New York within easy reach of lower Manhattan, Tebo offers to yacht owners an incomparable winter storage, repair and reconditioning Service where the smallest job or complete rehabilitation may be carried on under the owners' convenient supervision by an organization whose reputation and wide experience in marine work is nationally known and whose facilities are unexcelled in the Port of New York.

Tebo Yacht Basin Division of
TODD DRY DOCK ENGINEERING & REPAIR CORPORATION
Foot of 23rd Street, Brooklyn, New York