

AIRLINES

KLM



K.L.M.
ROYAL DUTCH AIRLINES



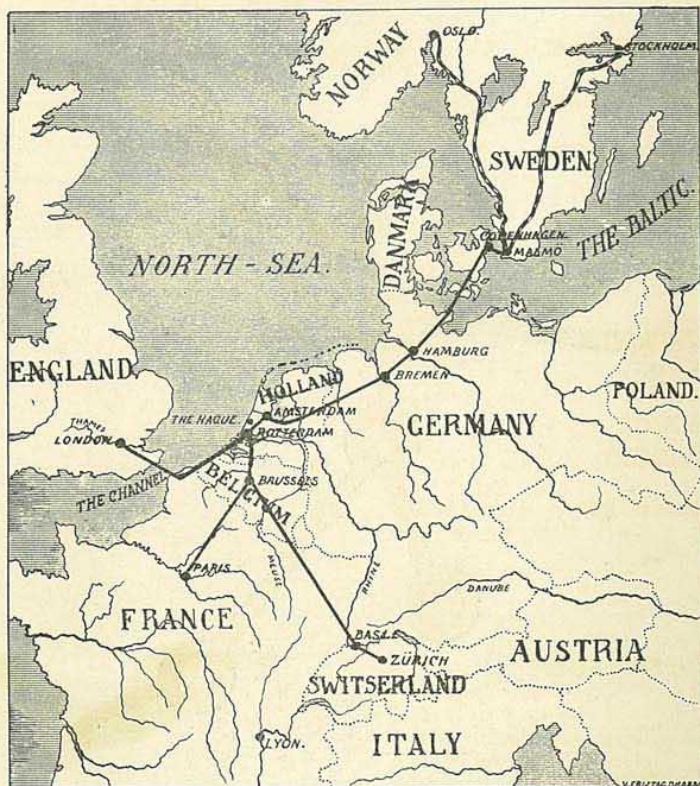
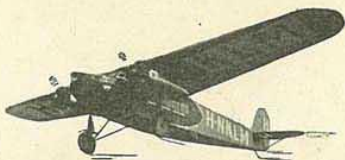
SUMMER-SERVICE

1928.

Corsten

K. L. M. SUMMER SERVICE 1928.

LONDON — ROTTERDAM — AMSTERDAM — BREMEN
HAMBURG — COPENHAGEN — MALMO.
PARIS — BRUSSELS — ROTTERDAM — AMSTERDAM
and NORTH GERMANY — SCANDINAVIA.
AMSTERDAM — ROTTERDAM — BRUSSELS — BASLE
ZURICH and vice versa.



II. 5. 28. 25 D.

Printed in Holland.

K. L. M. ROYAL DUTCH AIR LINES.

K. L. M. OFFICES AND AGENCIES.

LONDON.

Westend Office.

Wm H. Muller & Co. (London) Ltd.; Greener House
66/68, Haymarket S.W. 1.
Telephone: Regent 7331.
Telegrams: Bataviline Piccy-London.

City Office.

Electra House, 78, Moorgate, E. C. 2.
Telephone: London Wall 0417.

Aerodrome Office.

Air Port of London, Croydon, Surrey.
Telephone: Croydon 2810—2811.
After office hours Wallington 1819 or
Gerrard 0426.
Telegrams: Transaera-Croydon.

ROTTERDAM.

K. L. M. Office, Coolsingel 115. Tel.: 9198—9199.
Telegrams: Transaera-Rotterdam.

AMSTERDAM.

K. L. M. Office, Leidscheplein. Tel.: 33480—42302.
Telegrams: Transaera-Amsterdam.

THE HAGUE.

K. L. M. Head-Office, 9, Hofweg. Tel.: 17600.
Telegrams: Transaera-The Hague.

PARIS.

K. L. M. Office, 4, rue Scribe (Holland America Line).
Telephone: Opéra 00—85. Telegrams: Nasm-Paris.

Aerodrome Office.

Le Bourget Aerodrome, K. L. M. Office.
Telephone: Nord 83—02.

BRUSSELS.

Booking Office S.A.B.E.N.A., 32-34 Bould. Ad. Max.
Telephone: 210,06. Telegrams: Navigaera Brussels.

BASLE.

ZURICH.

BREMEN.

HAMBURG.

Balair, Birsfelden Aerodrome. Tel.: Safran 31.00.
Ad Astra, Dübendorf Aerodrome. Tel. 21 and 48.

Deutsche Luft Hansa, Neuenland Aerodrome.
Telephone: Roland 4353 and 8569.

K. L. M. Office, Fuhlsbüttel Aerodrome.
Telephone: D 7. 5541—45.

Telegrams: Transaera Hamburg.
Deutsche Luft Hansa, 10 Neuerwall.
Telephone: C 5, 0951.

Booking Office H. A. P. A. G., Jungfernstieg.
Telephone: C 2. 5497—98.

COPENHAGEN.

Booking Office. Det Danske Luftfartselskab, Vester-
brogade 5. Tel.: C. 904—C. 8800.
K. L. M. Office. Kastrup Aerodrome.
Telephone: Kastrup 488 and 440.
Telegrams: Transaera-Copenhagen.

MALMO.

A. B. Acrotransport, Bulltofta Aerodrome.
Telephone: 8259 and 8455.

NOTES FOR PASSENGERS.

The K. L. M. (Royal Dutch Air Lines) have had eight years continuous experience in operating aeroplane services between England and the Continent.

- Aeroplanes.** All K. L. M. Air Lines are run by the famous Fokker monoplanes, which machines carry 8—15 passengers.
- Pilots.** The K. L. M. Pilots are the pick of the Dutch Air Force and they act as auxiliary Pilots on the various Air Routes during a period of training before themselves piloting a K. L. M. aeroplane.
- Mechanics.** All K. L. M. twin-engined Aeroplanes carry a highly trained and certificated mechanic.
- Wireless.** Each K. L. M. Aeroplane is equipped with wireless telephone and the Pilot is in constant touch with the various air ports and other aircraft.
- Aerodromes.** At all air-termini motor cars are provided without extra charge to convey passengers from the centre of the town to the aerodrome and vice-versa. At the Aerodromes of Rotterdam and Amsterdam the K.L.M. maintain well equipped restaurants.
- Reservations.** Seats should be booked in advance. Any agent or tourist office can reserve a seat on request.
- Children.** Infants in arms are carried free. Children up to 7 years of age at half fare.
- Luggage.** Thirty pounds (or 15 Kgs.) of luggage is carried free for each passenger. Excess luggage according to Excess baggage rates.
- Maps of the route.** Maps of all K. L. M. routes can be obtained free of charge at the K. L. M. Offices and Aerodromes.

SPECIAL NOTICE.

SUMMERTIME:

In England, France, Belgium and Holland summertime finishes on October 6th.

1. LONDON — HOLLAND — SCANDINAVIA.

Morning Service.

April 23rd to Sept. 1st Incl.	Sept. 3rd to Oct. 6th Incl.		April 23rd to Oct. 6th Incl.
9.00	7.30	d HOTEL VICTORIA a	19.05
10.00	8.30	d Croydon Aerodr. a	18.05
12.35	11.05	a ROTTERDAM d	15.45
12.50	11.20	d ROTTERDAM a	15.30
13.15	11.45	a AMSTERDAM d	15.05
14.00	12.30	d AMSTERDAM a	14.30
16.00	14.30	a HAMBURG d	11.25
16.20	14.50	d HAMBURG a	11.05
18.10	16.40	a COPENHAGEN d	9.05
18.35	17.05	d COPENHAGEN a	8.45
18.50	17.20	a MALMO d	8.30

Amsterdam—Malmo in conjunction with A. B. Aerotransport.
For further particulars about the London—Scandinavia—Finland Route ask for the special K.L.M./A.B.A. folder.

2. LONDON — ROTTERDAM — AMSTERDAM.

Afternoon Service.
May 15th—Sept. 29th incl.

13.00	d HOTEL VICTORIA a	13.05
14.00	d Croydon Aerodr. a	12.05
16.35	a ROTTERDAM d	9.45
16.55	d ROTTERDAM a	9.25
17.20	a AMSTERDAM d	9.00

3. LONDON — AMSTERDAM (non stop).

Evening Service.
June 1st—Sept. 1st incl.

16.00	d HOTEL VICTORIA a	15.45
17.00	d Croydon Aerodr. a	14.45
	ROTTERDAM	
	ROTTERDAM	
20.00	a AMSTERDAM d	12.00

Car Service see page 8.

4. LONDON-AMSTERDAM-BREMEN-HAMBURG.

Connecting Service.

April 23rd to Sept. 1st Incl.	Sept. 3rd to Oct. 6th Incl.		April 23rd to Sept. 1st Incl.	Sept. 3rd to Oct. 6th Incl.
9.00	7.30	d Hotel Victoria a ↑	19.05	19.05
10.00	8.30	d Croydon Aerodrome a	18.05	18.05
13.35	12.05	d AMSTERDAM a	14.15	14.00
15.10	13.40	a BREMEN d	11.35	11.20
15.25	13.55	d BREMEN a	11.20	11.05
16.10	14.40	a HAMBURG d ↓	10.30	10.15

Amsterdam—Bremen—Hamburg in conjunction with Deutsche Luft Hansa.

5. PARIS—HOLLAND—SCANDINAVIA.

April 23rd to Sept. 1st Incl.	Sept. 3rd to Oct. 6th Incl.		April 23rd to Sept. 9th Incl.	Oct. 1st to Oct. 6th Incl.
9.00	7.30*	d GRAND HOTEL a ↑	19.00	19.25
10.00	8.30*	d Le Bourget Aerodr. a	18.00	18.25
12.40	11.10	a ROTTERDAM d	15.45	15.45
12.55	11.25	d ROTTERDAM a	15.30	15.30
13.20	11.50	a AMSTERDAM d	15.05	15.05
14.00	12.30	d AMSTERDAM a	14.30	14.30
16.00	14.30	a HAMBURG d	11.25	
16.20	14.50	d HAMBURG a	11.05	
18.10	16.40	a COPENHAGEN d	9.05	
18.35	17.05	d COPENHAGEN a	8.45	
18.50	17.20	a MALMO d ↓	8.30	

Amsterdam—Malmo in conjunction with A. B. Aerotransport.

For further particulars about the Paris—Scandinavia—Finland Route ask for the special K. L. M./A. B. A. folder.

*) Departure from Paris at 8.00 a.m. (7.00 a.m. from Grand Hotel) from Oct. 1st to Oct. 6th incl.

From October 1st to October 6th incl. intermediate landing at Brussels.

Car Service see page 8.

6. BRUSSELS—HOLLAND—SCANDINAVIA.

April 23rd to Sept. 1st Incl.	Sept. 3rd to Oct. 6th Incl.		April 23rd to Oct. 6th Incl.
11.00	10.05	d BRUSSELS a ↑	16.15
12.05	11.10	a ROTTERDAM d	15.45
12.20	11.25	d ROTTERDAM a	15.30
12.45	11.50	a AMSTERDAM d	15.05
14.00	12.30	d AMSTERDAM a	14.30
16.00	14.30	a HAMBURG d	11.25
16.20	14.50	d HAMBURG a	11.05
18.10	16.40	a COPENHAGEN d	9.05
18.35	17.05	d COPENHAGEN a	8.45
18.50	17.20	a MALMO d ↓	8.30

Amsterdam—Malmo in conjunction with A. B. Aerotransport.
For further particulars about the Paris—Scandinavia—Finland Route ask for the special K.L.M./A.B.A. folder.

7. AMSTERDAM—ROTTERDAM—BRUSSELS—PARIS.

April 23rd—Sept. 29th incl.

9.00	d AMSTERDAM a ↑	19.20
9.25	a ROTTERDAM d	18.55
9.45	d ROTTERDAM a	18.35
10.15	a BRUSSELS d	17.30
10.35	d BRUSSELS a	17.15
12.30	a PARIS d ↓	15.30

8. AMSTERDAM—BASLE—ZURICH.

April 23rd—Sept. 29th incl.

9.00	d AMSTERDAM a ↑	19.20
9.25	a ROTTERDAM d	18.55
9.45	d ROTTERDAM a	18.35
10.15	a BRUSSELS d	17.30
10.35	d BRUSSELS a	17.00
13.50	a BASLE d	13.40
14.10	d BASLE a	13.20
14.55	a ZURICH d ↓	12.35

In conjunction with Balair.

In Basle and Zürich connections by air to Chaux de Fonds-Loche, Lausanne, Geneva and St. Gallen.

Railway connections to South Switzerland and Italy.

Car Service see page 8.

PASSENGER FARES AND EXCESS BAGGAGE.

30 lbs. or 15 K.G. of Luggage free per Passenger.

ROUTE.	SINGLE		Excess Baggage.	
		Opposite direction.		Opposite direction.
London - Amsterdam	£ 4.—	Fl. 48.—	per lb. 5 d.	per K.G. Fl. 0.50
Return	» 7.10.—	» 90.—		
» - Bremen	» 7.—	R.M. 140.—	8 d.	R.M. 1.40
» - Copenhagen	» 11. 6.—	D.Crs. 205.—	11 d.	D.Crs. 1.50
» - Hamburg	» 8.—	R.M. 160.—	9 d.	R.M. 1.60
» - Malmo	» 12. 3.—	S.Crs. 220.—	1/—	S.Crs. 1.60
» - Rotterdam	» 4.—	Fl. 48.—	5 d.	Fl. 0.50
Return	» 7.10.—	» 90.—		
Paris - Amsterdam	Fr.Frs. 400.—	Fl. 39.50	per K.G. Fr.Frs. 5.—	Fl. 0.50
Return	» 700.—	» 70.—		
» - Bremen	» 760.—	R.M. 126.—	» 8.50	R.M. 1.40
» - Brussels	» 275.—	B.Frs. 350.—	» 3.—	B.Frs. 3.50
» - Copenhagen	» 1280.—	D.Crs. 193.—	» 10.50	D.Crs. 1.50
» - Hamburg	» 880.—	R.M. 146.—	» 9.50	R.M. 1.60
» - Malmo	» 1380.—	S.Crs. 208.—	» 11.—	S.Crs. 1.60
» - Rotterdam	» 400.—	Fl. 39.50	» 5.—	Fl. 0.50
Return	» 700.—	» 70.—		
Amsterdam - Basle	Fl. 60.—	S.Frs. 125.—	Fl. 0.50	S.Frs. 1.—
» - Bremen	» 36.—	R.M. 60.—	» 0.35	R.M. 0.60
» - Brussels	» 18.—	B.Frs. 250.—	» 0.25	B.Frs. 3.50
» - Copenhagen	» 88.—	D.Crs. 133.—	» 0.70	D.Crs. 1.05
» - Hamburg	» 48.—	R.M. 80.—	» 0.45	R.M. 0.75
» - Malmo	» 98.—	S.Crs. 148.—	» 0.75	S.Crs. 1.15
» - Paris	» 39.50	Fr.Frs. 400.—	» 0.50	Fr.Frs. 5.—
Return	» 70.—	» 700.—		
» - Zürich	» 70.—	S.Frs. 145.—	» 0.60	S.Frs. 1.20
» - Rotterdam	» 9.—	£ 0.15.—	» 0.10	Fl. 0.10
Return	» 15.—	» 1. 5.—		
Rotterdam - Amsterdam	Fl. 9.—	» 0.15.—	Fl. 0.10	» 0.10
Return	» 15.—	» 1. 5.—		
» - Basle	» 60.—	S.Frs. 125.—	» 0.50	S.Frs. 1.—
» - Bremen	» 41.—	R.M. 68.—	» 0.35	R.M. 0.60
» - Brussels	» 15.—	B.Frs. 220.—	» 0.25	B.Frs. 3.50
» - Copenhagen	» 93.—	D.Crs. 141.—	» 0.70	D.Crs. 1.05
» - Hamburg	» 53.—	R.M. 88.—	» 0.45	R.M. 0.75
» - Malmo	» 103.—	S.Crs. 156.—	» 0.75	S.Crs. 1.15
» - Paris	» 39.50	Fr.Frs. 400.—	» 0.50	Fr.Frs. 5.—
Return	» 70.—	» 700.—		
» - Zürich	» 70.—	S.Frs. 145.—	» 0.60	S.Frs. 1.20
Hamburg - Bremen	R.M. 20.—	R.M. 20.—	R.M. 0.30	R.M. 0.30
» - Copenhagen	» 68.—	D.Crs. 68.—	» 0.50	D.Crs. 0.50
» - Malmo	» 85.—	S.Crs. 75.—	» 0.60	S.Crs. 0.60
Copenhagen - Malmo	D.Crs. 15.—	» 15.—	D.Crs. 0.10	» 0.10
Stockholm - Helsingfors	S.Crs. 100.—	F.M. 1000.—	S.Crs. 1.—	F.M. 10.—

FREIGHT RATES.

ROUTE.		Minimum	Opposite Direction	
				Minimum.
London - Amsterdam	6 d. per lb. over 50 lbs. 5 d.	2/—	Fl. 0.60 per K.G. » 0.50 over 25 K.G.	Fl. 1.20
» - Bremen	10 d. per lb.	3/4	R.M. 1.35 per K.G.	R.M. 2.70
» - Cassel	8 d. » »	2/8	» 1.35 » »	» 2.70
» - Copenhagen	1/4 » »	5/4	D.Crs. 2.25 » »	D.Crs. 4.50
» - Hamburg	1/— » »	4/—	R.M. 1.50 » »	R.M. 3.—
» - Malmo	1/6 » »	6/—	S.Crs. 2.40 » »	S.Crs. 4.80
» - Marzenbad	10 d. » »	3/4	Cz.Crs. 14.— » »	Cz.Crs. 28.—
» - Prague	1/— » »	4/—	» 16 — » »	» 32.—
» - Rotterdam	6 d. » » over 50 lbs. 5 d.	2/—	Fl. 0.60 » » » 0.50 over 25 K.G.	Fl. 1.20
Paris - Amsterdam	Fr.Frs. 6.— per K.G. over 25 K.Gs. Fr.Frs. 5.—	Fr.Frs. 6.—	» 0.60 per K.G. » 0.50 over 25 K.G.	» 1.20
» - Bremen	Fr.Frs. 7.50 per K.G.	» 7.50	R.M. 1.35 per K.G.	R.M. 2.70
» - Brussels	» 3.50 » »	» 3.50	B.Frs. 5.20 » »	B.Frs. 10.40
» - Copenhagen	» 12.— » »	» 12.—	D.Crs. 1.85 » »	D.Crs. 3.70
» - Hamburg	» 8.40 » »	» 8.40	R.M. 1.40 » »	R.M. 2.80
» - Malmo	» 13.— » »	» 13.—	S.Crs. 1.95 » »	S.Crs. 3.90
» - Rotterdam	» 6.— » » over 25 K.Gs. Fr.Frs. 5.—	» 6.—	Fl. 0.60 » » » 0.50 over 25 K.G.	Fl. 1.20
Brussels - Amsterdam	B.Frs. 4.20 per K.G.	B.Frs. 8.40	» 0.30 per K.G.	» 0.60
» - Bremen	» 7.30 » »	» 14.00	R.M. 0.95 » »	R.M. 1.90
» - Copenhagen	» 15.50 » »	» 31.—	D.Crs. 1.70 » »	D.Crs. 4.30
» - Hamburg	» 9.50 » »	» 19.—	R.M. 1.— » »	R.M. 2.—
» - Malmo	» 17.— » »	» 34.—	S.Crs. 1.80 » »	S.Crs. 3.60
» - Rotterdam	» 4.20 » »	» 8.40	Fl. 0.30 » »	Fl. 0.60

Through Rates to Gothenburg, Helsingfors, Norrköping, Oslo and Stockholm.

Further Rates on application

Special Rates are noted for regular or large consignments.

NOTES FOR SENDERS.

Consignments: K. L. M. Air Lines can convey practically any class of Freight, either in small parcels or consignments of several tons.

Light and bulky parcels: For light and bulky parcels cubic capacity rates are charged.

Packing cost: Packing cost is reduced to a minimum by aerial forwarding.

Clearance and Delivery: Goods are cleared through the Customs on the aerodromes with a minimum of delay and are immediately delivered by special vans to their destination.

Conveyance of Livestock: For transport of livestock special rates are charged. Apply for the special freight pamphlet.

Collection.—London. — Goods for despatch by K. L. M. Air Lines can be collected from any address in the City or West End of London, or they may be handed in to our Head Agents: Messrs. Wm H. Muller & Co. (London) Ltd., 66/68, Haymarket, S.W. 1, and Electra House, 78, Moorgate, E.C. 2, or to any of the Company's freight Agents.

From the provinces. — Goods may be despatched by passenger train to any London Railway Station for collection by K. L. M. Such consignments should be addressed to the Company's Head Agents and marked "to be called for." Senders should advise the Head Agents of same. Goods from the Provinces can also be consigned to K. L. M. Air Lines, East Croydon Station, which is near to the Aerodrome.

CAR SERVICE

conveyance by well equipped Motor-cars to and from the aerodrome is included in the fare. Cars leave the following central points one hour before departure of the aeroplanes

LONDON: Hotel Victoria, Northumberland Avenue near Trafalgar Square. A Representative of the Company is always in attendance.

PARIS: Grand Hotel, 2 Rue Scribe.

BRUSSELS: Sabena Office Boul. Adolphe Max 32—34

ROTTERDAM: K. L. M. Booking Office, Coolsingel.

AMSTERDAM: K. L. M. Booking Office, Leidscheplein.

BREMEN: Lloyd Booking Office, Bahnhofstrasse 35.

HAMBURG: "HAPAG" Booking Office, Jungfernstieg.

COPENHAGEN: Hotel d'Angleterre.

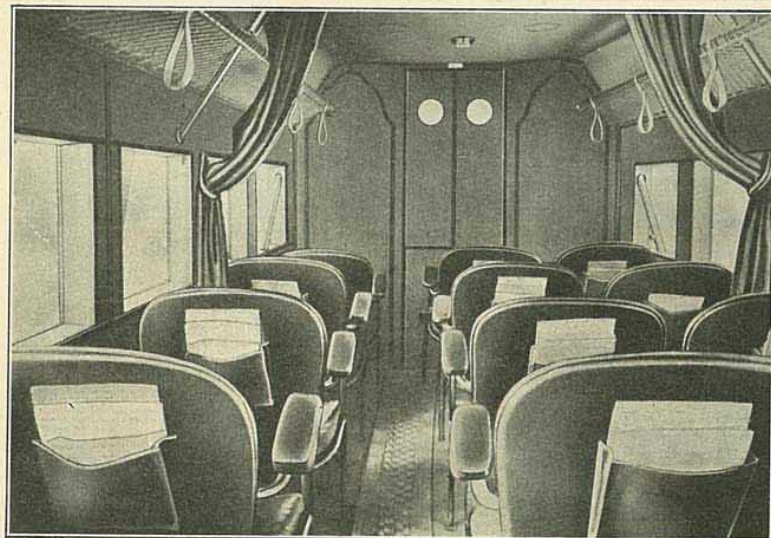
MALMO: Central Station (30 min. before departure).

BASLE: Hotel Schweizerhof (30 min. before departure).

ZURICH: Hotel National (45 min. before departure).



THE FAMOUS FOKKER COMMERCIAL MONOPLANE
type F VIII - 2 engines - 15 passengers - speed 110 miles P. H.



CABIN OF FOKKER F VIII.