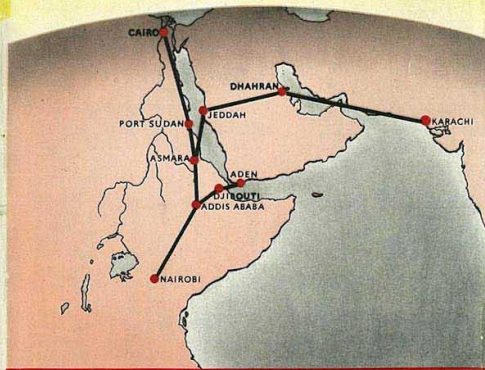


JUNE 1, 1952

ETHIOPIAN AIRLINES

THE WONDERLAND ROUTE



C.R. 941

Yesterday



SHELL B.P. AVIATION SERVICE

The growth of aviation in the last 30 years was paralleled by the growth of Shell B.P. Aviation Service

There are now hundreds of airlines in over 80 countries passing by 1,500 airfields, finding the ready Service of this world-wide organization.



Today

- ★ CONVAIR
- ◆ DC 3 Passenger
- Cargo (Passenger seats available)



ETHIOPIAN AIRLINES SOUTHBOUND INTERNATIONAL SCHEDULES

FLIGHT No.	From GMT	105 Sun.	221 Sun.	127 Sun. (alt)	111 Mon.	223 Mon.	235 Mon. (alt)	101 Tues. (alt)	225 Tues.	227 Wed.	103 Thur.	229 Thur.	115 Fri.	231 Fri.	233 Sat.
Karachi	lv. 4 1/2	—	—	2300 Mon.	—	—	—	—	—	—	—	—	—	—	—
Dhahran	ar. +4	—	—	0340	—	—	—	—	—	—	—	—	—	—	—
Dhahran	lv. +4	—	—	0425	—	—	—	—	—	—	—	—	—	—	—
Jeddah	ar. +3	—	—	0655	—	—	—	—	—	—	—	—	—	—	—
Jeddah	lv. +3	—	—	0740	—	—	—	—	—	—	—	—	—	—	—
Cairo	lv. +2	0730	—	—	—	—	—	0730	—	—	0730	—	—	—	—
Port Sudan	ar. +2	1110	—	—	—	—	—	1110	—	—	1110	—	—	—	—
Port Sudan	lv. +2	1140	—	—	—	—	—	1140	—	—	1140	—	—	—	—
Asmara	ar. +3	1415	—	0940	—	—	—	1415	—	—	1415	—	—	—	—
Asmara	lv. +3	1500	—	1020	—	—	1300	1500	—	—	1500	—	—	—	—
Aden	lv. +3	—	1205	—	—	1205	—	—	1240	1205	—	—	1205	1240	—
Assab	ar. +3	—	—	—	—	—	—	—	—	—	—	—	1305	—	—
Assab	lv. +3	—	—	—	—	—	—	—	—	—	—	—	1330	—	—
Cantoniera	ar. +3	—	—	—	—	—	—	—	—	—	—	—	1415	—	—
Cantoniera	lv. +3	—	—	—	—	—	—	—	—	—	—	—	1440	—	—
Djibouti	ar. +3	—	1310	—	—	—	—	—	1345	1310	—	—	—	—	—
Djibouti	lv. +3	—	—	—	—	—	—	—	—	—	—	—	—	—	—
Dire Dawa	ar. +3	—	1330	—	—	1330	—	—	1400	1330	—	—	—	1330	1400
Dire Dawa	lv. +3	—	1435	—	—	1435	—	—	1505	1435	—	—	—	1435	1505
Dire Dawa	ar. +3	—	1510	—	—	1510	—	—	1520	1510	—	—	—	1510	1520
Addis Ababa	ar. +3	1710	1635	1230	—	1635	1600	1710	1640	1635	1710	1630	—	1635	1640
Addis Ababa	lv. +3	—	—	—	—	—	—	—	—	—	—	—	—	—	—
Nairobi	ar. +3	—	—	—	—	1315	—	—	—	—	—	—	—	0945	—
Nairobi	lv. +3	—	—	—	—	1625	—	—	—	—	—	—	—	1255	—

ETHIOPIAN AIRLINES NORTHBOUND INTERNATIONAL SCHEDULES

FLIGHT No.	From GMT	220 Sun.	222 Mon.	100 Mon. (alt)	234 Mon. (alt)	224 Tues.	110 Wed.	226 Wed.	102 Wed.	228 Thur.	230 Fri.	232 Sat.	114 Sat.	126 Sat. (alt)	104 Sat.
Nairobi	lv. +3	—	—	—	—	—	0700	—	—	—	—	—	—	—	—
Addis Ababa	ar. +3	—	—	—	—	—	1020	—	—	—	—	—	—	—	—
Addis Ababa	lv. +3	0645	0645	1130	0900	0800	—	0645	1130	0700	0645	0800	—	1115	1130
Dire Dawa	ar. +3	0810	0810	—	—	0925	—	0810	—	—	0810	0925	—	—	—
Dire Dawa	lv. +3	0840	0840	—	—	0945	—	0840	—	—	0840	0945	—	—	—
Djibouti	ar. +3	0945	0945	—	—	1050	—	0945	—	—	0945	1050	—	—	—
Djibouti	lv. +3	1005	1005	—	—	1105	—	1005	—	—	1005	1105	—	—	—
Cantoniera	ar. +3	—	—	—	—	—	—	—	—	—	—	—	—	—	—
Cantoniera	lv. +3	—	—	—	—	—	—	—	—	0850	—	—	—	—	—
Assab	ar. +3	—	—	—	—	—	—	—	—	0915	—	—	—	—	—
Assab	lv. +3	—	—	—	—	—	—	—	—	1000	—	—	—	—	—
Aden	ar. +3	1110	1110	—	—	—	—	—	—	1025	—	—	—	—	—
Aden	lv. +3	—	—	—	—	—	—	—	—	1125	—	—	—	—	—
Asmara	ar. +3	—	—	1340	1200	—	—	—	—	1340	—	—	—	—	1325
Asmara	lv. +3	—	—	1410	—	—	—	—	—	1410	—	—	—	—	1355
Port Sudan	ar. +2	—	—	1445	—	—	—	—	—	1445	—	—	—	—	1445
Port Sudan	lv. +2	—	—	1515	—	—	—	—	—	1515	—	—	—	—	1515
Cairo	ar. +2	—	—	1905	—	—	—	—	—	1905	—	—	—	—	1905
Jeddah	ar. +3	—	—	—	—	—	—	—	—	—	—	—	—	—	1555
Jeddah	lv. +3	—	—	—	—	—	—	—	—	—	—	—	—	—	1640
Dhahran	ar. +4	—	—	—	—	—	—	—	—	—	—	—	—	—	2050
Dhahran	lv. —	—	—	—	—	—	—	—	—	—	—	—	—	—	2135
Karachi	ar. +4 1/2	—	—	—	—	—	—	—	—	—	—	—	—	—	Sur. 0245

Effective June 1st 1952

Flight 127 — operates June 1st, 15th, 29th, and every two weeks thereafter
 Flight 101 — operates June 10th, 24th, and every two weeks thereafter
 Flight 235 — operates June 2nd, 16th, 30th, and every two weeks thereafter

Flight 126 — operates June 14th, 28th, and every two weeks thereafter.
 Flight 100 — operates June 9th, 23rd, and every two weeks thereafter.
 Flight 234 — operates June 2nd, 16th, 30th, and every two weeks thereafter.



OUTBOUND DOMESTIC SCHEDULES

Cargo (Passenger seats available)

FLIGHT No.		300 Sun.	302 Sun.	304 Mon.	314 Mon.	316 Mon.	306 Tues.	308 Wed.	310 Wed.	318 Thur.	320 Fri.	322 Fri.	324 Fri.
Addis Ababa	lv	0730	1400	0830	0830	0830	0800	0730	0830	0715	1330	0730	0830
Debra Marcos	ar	0820	—	—	—	—	—	0820	—	—	—	0820	—
Debra Marcos	lv	0840	—	—	—	—	—	0840	—	—	—	0840	—
Bahar Dar	ar	0915	—	—	—	—	—	0915	—	—	—	0915	—
Bahar Dar	lv	0930	—	—	—	—	—	0930	—	—	—	0930	—
Gondar	ar	1005	—	—	—	—	—	1005	—	—	—	1005	—
Jimma	ar	—	1505	—	—	—	—	—	0935	—	—	—	0935
Jimma	lv	—	—	—	—	—	—	—	1005	—	—	—	1005
Lekempti	ar	—	—	—	—	—	—	—	—	—	—	—	—
Lekempti	lv	—	—	—	—	—	—	—	—	—	—	—	—
Gore	ar	—	—	—	—	—	0925	—	1050	—	—	—	1050
Gore	lv	—	—	—	—	—	0955	—	—	—	—	—	1115
Dembidollo	ar	—	—	—	—	—	1025	—	—	—	—	—	1145
Dembidollo	lv	—	—	—	—	—	1055	—	—	—	—	—	—
Asosa	ar	—	—	—	—	—	1140	—	—	—	—	—	—
Hosana	ar	—	—	—	—	—	—	—	—	—	1420	—	—
Hosana	lv	—	—	—	—	—	—	—	—	—	1440	—	—
Soddu	ar	—	—	—	—	—	—	—	—	—	1505	—	—
Goba	ar	—	—	0935	0935	0935	—	—	—	—	—	—	—
Goba	lv	—	—	0955	0955	0955	—	—	—	—	—	—	—
Ghinner	ar	—	—	1020	1020	1020	—	—	—	—	—	—	—
Ghinner	lv	—	—	1040	1040	1040	—	—	—	—	—	—	—
Neghelli	ar	—	—	1140	—	—	—	—	—	—	—	—	—
El Carre	ar	—	—	—	—	1130	—	—	—	—	—	—	—
Dire Dawa	ar	—	—	—	—	—	—	—	0840	—	—	—	—

Flight 318 after arrival Dire Dawa proceeds to Sinclair and Roger Ray Camps
Schedules are subject to change without notice



ANCIENT CASTLE IN GONDAR

See
Ethiopia
on your way

By
ETHIOPIAN AIRLINES
THE WONDERLAND ROUTE



INBOUND DOMESTIC SCHEDULES

Cargo (Passenger seats available)

FLIGHT No.		301 Sun.	303 Sun.	305 Mon.	315 Mon.	317 Mon.	307 Tues.	309 Wed.	311 Wed.	319 Thur.	321 Fri.	323 Fri.	325 Fri.
Dire Dawa	lv	—	—	—	—	—	—	—	—	1510	—	—	—
El Carre	lv	—	—	—	—	1200	—	—	—	—	—	—	—
Neghelli	lv	—	—	1210	—	—	—	—	—	—	—	—	—
Ghinner	ar	—	—	1310	—	1250	—	—	—	—	—	—	—
Ghinner	lv	—	—	1330	1040	1310	—	—	—	—	—	—	—
Goba	ar	—	—	1355	1105	1335	—	—	—	—	—	—	—
Goba	lv	—	—	1415	1125	1355	—	—	—	—	—	—	—
Soddu	lv	—	—	—	—	—	—	—	—	—	1525	—	—
Hosana	ar	—	—	—	—	—	—	—	—	—	1550	—	—
Hosana	lv	—	—	—	—	—	—	—	—	—	1615	—	—
Asosa	lv	—	—	—	—	—	1210	—	—	—	—	—	—
Dembidollo	ar	—	—	—	—	—	1255	—	—	—	—	—	—
Dembidollo	lv	—	—	—	—	—	1325	—	—	—	—	—	1210
Gore	ar	—	—	—	—	—	1355	—	—	—	—	—	1240
Gore	lv	—	—	—	—	—	1425	—	—	—	—	—	1310
Lekempti	ar	—	—	—	—	—	—	—	1115	—	—	—	—
Lekempti	lv	—	—	—	—	—	—	—	—	—	—	—	—
Jimma	ar	—	—	—	—	—	—	—	1200	—	—	—	—
Jimma	lv	—	1535	—	—	—	—	—	1230	—	—	—	1355
Gondar	lv	1035	—	—	—	—	—	—	—	—	—	—	—
Bahar Dar	ar	1105	—	—	—	—	—	1035	—	—	—	—	—
Bahar Dar	lv	1125	—	—	—	—	—	1105	—	—	—	—	—
Debra Marcos	ar	1200	—	—	—	—	—	1125	—	—	—	—	—
Debra Marcos	lv	1220	—	—	—	—	—	1200	—	—	—	—	1200
Addis Ababa	ar	1310	1640	1520	1230	1500	1600	1220	1310	1335	1635	1705	1310
Addis Ababa	ar	1310	1640	1520	1230	1500	1600	1310	1335	1635	1705	1310	1525

Schedules are subject to change without notice



AIR MAIL
SAVES TIME!



SHIP BY AIR FREIGHT
FAST,
DEPENDABLE,
LOW-COST.



Offers the
Best Connections to
EUROPE - U.S.A. - AFRICA - ASIA

Sat.	Sun.	Tue.	Thu.					Sun.	Tue.	Thu.	Thu.
* * * 919	* * * * 923	917	* 903					928	902	984	904
2100	0700	0830	0055	Dep.	Cairo	Ar.	0205	0310	0640	0210	
0040	1040	1210	—		Athens		2310	0015	—	2315	
0325	1320	1455	0620		Rome		1840	1950	0025	1850	
—	—	—	—		Milan		—	—	—	—	
0630	—	—	—		Geneva		—	—	—	—	
—	1620	—	0920		Zurich		1620	—	1550	—	
0900	1900	1900	1200		Paris		1325	1355	—	1325	
1255	—	—	—		Shannon		—	—	—	—	
—	—	—	—		Madrid		—	—	1645	—	
—	—	—	—		Lisbon		—	—	1430	—	
1935	—	—	—		Sa. Maria		—	—	0735	—	
—	—	—	—		Gander		—	—	—	—	
—	—	—	—		Boston		—	—	1705	—	
2215	0620	0620	2320	Ar.	New York	Dep.	1600	1600	1500	1600	

READ DOWN READ UP

- * 903 Connecting with 943 (Sky Tourist) in Rome at 1200 Thursday to Milan, Paris, Shannon, Gander, New York.
- * 903 Connecting with 925 in Rome at 1330 Thursday to Geneva, Paris, New York, Detroit & Chicago.
- ** 919 Connecting with 987 in Rome at 1100 Sunday to Madrid, Lisbon, Santa Maria & New York.
- *** 923 Connecting with 945 (Sky Tourist) in Rome at 1600 Sunday to Milan, Geneva, Paris, Shannon, Gander, Boston, & New York.

If you Prefer the Best -
Ask For **TWA**

- WORLD FAMOUS CONSTELLATION AIRCRAFT
- EXPERIENCED CREWS
- FINE MEALS
- COURTEOUS SERVICE
- YOU CAN DEPEND ON **TWA**

Other Airline Connections

FROM AND TO CAIRO

KLM BOAC AI KLM BOAC AF SK SR AF KLM BOAC AF SK SR AF BOAC KLM AI BOAC							
Sun.	Sat.	Sun.	Tue.	AIR LINE	SAS BOAC AF AI PAL	AIR LINE	SK KLM BOAC AF SR SK AF BOAC KLM AI BOAC
107	201	1020	0800	Flight Nos.	972 704 164 503 500	Flight Nos.	340 871 206 318 851 110 159
Sun.	Sat.	Sun.	Tue.	Week Days	Mon. Sun. Mon. Sun. Wed.	Cairo	Tue. Wed. Thur. Sat. Sun.
0800	1020	0800	0630	Dep. Nairobi	1545 2300 0015 1330 1710 2230	Ar. Istanbul	0705 2205 0335 2310 2359
—	—	—	—	Ar. Johannesburg	0650	Rome	—
—	—	—	—	Ar. Johannesburg	0130	Geneva	1400 1520 2130 1655 1705
—	—	—	—	Ar. Johannesburg	0900	Zurich	—
1015	—	—	—	Ar. Johannesburg	0630	Vienna	—
1320	—	—	—	Ar. Johannesburg	0750	Paris	—
1525	—	—	—	Ar. Johannesburg	0910	Stuttgart	—
1620	—	—	—	Ar. Johannesburg	1030	Frankfurt	—
—	—	—	—	Ar. Johannesburg	1325	Dusseldorf	—
—	—	—	—	Ar. Johannesburg	—	Amsterdam	—
—	—	—	—	Ar. Johannesburg	1040	London	—
—	—	—	—	Ar. Johannesburg	—	Copenhagen	—
—	—	—	—	Ar. Johannesburg	—	Oslo	—
—	—	—	—	Ar. Johannesburg	—	Stockholm	—

YOUR CONNECTIONS AT NAIROBI TO & FROM EAST, CENTRAL & SOUTH AFRICA

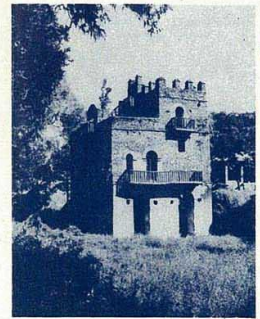
CAA SAA	CAA EAAC	AIR LINE	EAAC CAA SAA CAA
Sat.	Sun.	Flight Nos.	Week Days
0800	1020	0800	0630
—	—	0805	1735
—	—	1055	1645
—	—	1240	1100
—	—	1400	0940
—	—	1540	0800
—	—	—	0845

YOUR CONNECTIONS AT KARACHI TO & FROM INDIA, THE FAR EAST & AUSTRALIA

SAS BOAC AF AI PAL	AIR LINE	PAL AI AF BOAC SAS
Flight Nos.	Flight Nos.	Flight Nos.
972 704 164 503 500	1330 1710	501 504 813 705 971
1545 2300 0015 1330 1710	2230	1230 1540 0530 1425
0650	—	1030 1100 0950
—	—	—
—	—	—
—	—	—
—	—	—
—	—	—
—	—	—
—	—	—
—	—	—
—	—	—
—	—	—
—	—	—
—	—	—
—	—	—
—	—	—
—	—	—
—	—	—
—	—	—



VISIT
Beautiful
LAKE TANA REGION



Ancient Castles and Churches
Wonder relics of an age-old Culture

ANCIENT BATH HOUSE IN GONDAR

LAKE TANA, SOURCE OF THE BLUE NILE

For full information regarding Photographic and Hunting Safaris apply to

ETHIOPIAN AIRLINES
THE WONDERLAND ROUTE
ADDIS ABABA - ETHIOPIA.

Other Airline Connections

FROM AND TO CAIRO

KLM		BOAC		AI	KLM		BOAC		AF	SK	SR	AF	KLM		BOAC		AIR LINE					SK	KLM	BOAC	AF	SR	SK	AF	BOAC	KLM	AI	BOAC													
832	160	115	826	162	215	872	341	207	852	160	Flight Nos.		972	833	161	212	340	871	206	318	851	110	159	Flight Nos.					972	833	161	212	340	871	206	318	851	110	159						
Sun.	Sat.	Sat.	Thur.	Wed.	Wed.	Wed.	Tue.	Tue.	Tue.	Mon.			Mon.	Mon.	Mon.	Tue.	Tue.	Wed.	Wed.	Wed.	Thur.	Sat.	Sat.																						
0945	2250	2230	0900	2250	2245	0510	2200	1110	0130	2250	Dep.	Cairo	Ar.	0210	0805	2359	0640	0705	0310	2000	2205	0335	2310	2359																					
—	—	—	—	—	—	0945	—	—	—	—		Istanbul	↑	—	—	—	—	—	0040	—	—	—	—	—																					
1430	0435	—	—	0435	—	—	—	1550	0615	0435		Rome		—	0200	1705	—	—	1400	1520	2130	1655	1705																						
—	—	—	1545	—	—	—	—	—	—	—		Geneva		1650	—	—	—	2310	—	—	—	—	—																						
—	—	—	—	—	—	—	—	—	—	—		Zurich		—	—	—	—	2130	—	—	—	—	—																						
—	—	—	—	—	—	—	—	—	—	—		Vienna		—	—	—	—	Mon.	—	—	—	—	—																						
—	—	0645	—	—	—	—	—	1955	—	—		Paris		—	—	—	2200	—	—	1000	—	—	—																						
—	—	—	—	—	—	—	—	—	—	—		Stuttgart		—	—	—	—	—	—	—	—	—	—																						
—	—	—	—	—	—	—	—	—	—	—		Frankfurt		1415	—	—	—	—	—	—	—	—	—																						
—	—	—	—	—	—	—	—	—	—	—		Dusseldorf		—	—	—	—	—	—	—	—	—	—																						
1925	—	—	1910	—	—	—	—	—	—	—		Amsterdam		—	—	—	—	—	—	—	—	—	—																						
—	1040	0925	—	1040	—	—	—	—	—	—		London		—	—	0915	—	—	—	—	—	—	—																						
—	—	—	—	—	—	—	—	—	—	—		Copenhagen		1110	—	—	—	—	—	—	—	—	—																						
—	—	—	—	—	—	—	—	—	—	—		Oslo		0800	—	—	—	—	—	—	—	—	—																						
—	—	—	—	—	—	—	—	—	—	—		Stockholm	Dep.	0840	—	—	—	—	—	—	—	—	—																						
—	—	—	—	—	—	—	—	—	—	—		Ar.	↑	Sun.	—	—	—	—	—	—	—	—	—																						

YOUR CONNECTIONS AT NAIROBI TO & FROM EAST, CENTRAL & SOUTH AFRICA

CAA	SAA	CAA	EAAC	AIR LINE		EAAC	CAA	SAA	CAA	
107	201	103	Week	Flight Nos.		104	202	104		
Sat.	Tue.	Tue.	Days			Week	Thur.	Fri.		
0800	1020	0800	0630	Dep.	Nairobi	Ar.	1825	1735	1645	1735
—	—	—	0805		Mombasa	↑	1640	—	—	—
1015	—	—	1055		Dares Salaam		1420	—	—	—
—	—	1240	—		Ndola		1100	—	1100	
—	—	1400	—		Lusaka		0940	—	0940	
1320	—	—	—		Blantyre		—	—	—	
1525	—	1540	—		Salisbury		0800	—	0800	
—	1620	—	—	Ar.	Johannesburg	Dep.	—	0845	—	

YOUR CONNECTIONS AT KARACHI TO & FROM INDIA, THE FAR EAST & AUSTRALIA

SAS	BOAC	AF	AI	PAL	AIR LINE		PAL	AI	AF	BOAC	SAS	
972	704	164	503	500	Flight Nos.		501	504	813	705	971	
Mon.	Sun.	Mon.	Sun.	Wed.			Sun.	Sun.	Sun.	Sun.	Sun.	
1545	2300	0015	1330	1710	Dep.	Karachi	Ar.	0230	1230	1540	0530	1425
—	—	—	1730	—		Bombay	↑	—	1030	—	—	—
—	—	0650	—	2330		Calcutta		2120	—	1100	—	0950
Tue.	—	—	—	—		Rangoon		—	—	—	—	—
0130	—	1630	—	—		Saigon		—	—	0630	—	—
—	—	—	—	—		Bangkok		—	—	—	—	0550
0500	—	—	—	—				—	—	—	—	Sun.
—	Mon.	1545	—	—		Singapore		—	—	—	1800	—
—	Tue.	1030	—	—				—	—	—	1300	—
—	1030	—	—	—		Djarkarta		—	—	—	Sat.	—
2200	—	—	—	—		Tokyo		—	—	—	1800	Sat.
—	Wed.	—	—	Thur.		Manila		1400	—	—	—	—
—	—	—	1100	—				Sat.	—	—	—	—
—	0700	—	—	—	Ar.	Sydney	Dep.	—	—	—	2130	—
—	—	—	—	—				—	—	—	Fri.	—

GENERAL PASSENGER INFORMATION

SCHEDULES ARE SUBJECT TO CHANGE WITHOUT NOTICE. — EAL may cancel any flight at any time or at any other point and may omit any scheduled stop at any time it deems such action advisable or necessary. EAL will not be responsible for failure of aircraft to depart or arrive on scheduled time and reserves the right to change the times shown in this publication without notice to the public.

DEPARTURE TIME — Information concerning availability of transportation to the airport, and desired arrival time at the airport for specific departure, will be furnished when reservations are made. Sufficient advance time must be allowed for the checking of baggage and the completion of governmental and other requirements, as advised when booking is made.

TRAVEL DOCUMENTS — Passengers are responsible for possessing valid passports, health certificates and other documents, as specified by the laws of the country from, into, or over which passengers are to fly. All Ethiopian Air Lines offices and agents are prepared to advance general information regarding such requirements.

Transit Visas For Ethiopia are not required if staying less than 24 hours, and in possession of an onward reservation.

STOP-OVERS — Within the time limit of the ticket, stop-overs will be permitted at any scheduled stop, if previously arranged.

CHILDREN — One infant under two years of age and not occupying a seat will be carried with each accompanying passenger paying the adult fare. The fare for such infants will be 10% of the applicable adult fare. A child two years of age and not yet 12 years of age, an infant under two years of age who occupies a seat, and infants in excess of one accompanying a passenger paying the adult fare will be charged one-half of the applicable adult fare.

FREE BAGGAGE — Free baggage weight allowance is limited to 30 kilos or 66 pounds on each ticket for passengers who hold 50% or full rate ticket on all international flights. On internal flights the free allowance is 20 kilos or 44 pounds. Passengers travelling through Ethiopia in connection with an international flight will be allowed 30 kilos or 66 pounds on all sectors.

EXCESS WEIGHT & VALUE CHARGES — Excess baggage: if allowed will be charged for at 1% of the adult, one-way fare per kilo for the first 10 kilos and 1/2 of 1% of the 11th kilo.

The carriage of excess baggage is, of course, subject to space being available in the aircraft and, therefore, we cannot guarantee that it will travel with you in the same aircraft.

RESERVATIONS — All requests for reservations should be made well in advance and will be held only a reasonable time after passenger has been notified that space is available. Ticket should be purchased or advance deposit made at the time when space is confirmed.

CANCELLATION OF RESERVATIONS BY THE PASSENGER In order to be free of charge a cancellation of a journey must be made in sufficient time to reach the reservation office in the city where the seat has been requested before the deadlines mentioned below:

72 hours prior to scheduled departure, if the normal adult one-way fare on the cancelled section is £. 25.0.0 or more, and

48 hours prior to scheduled departure, if the normal adult one-way fare is less than £. 25.0.0 (or equivalent in other currency)

Cancellation fees are otherwise charged as follows: 25% of the one-way fare applicable to the carriage to destination or first point where a stop-over of more than 6 hours duration is scheduled (max. £. 25.0.0, min. £. 2.0.0)

NO SHOW SERVICE CHARGES — No-show service charges will be assessed to all passengers, who fail to arrive at the airport at the time stipulated by the carrier, and as a consequence thereof do not use the space reserved, or who, due to improper documentation, are not prepared to travel on the flight for which space has been reserved for them. The No-Show Service Charge is 25% of the one-way fare applicable to the carriage to destination or the first point where a stop-over of more than 6 hours duration is scheduled (max. £. 25.0.0 min. £. 2.0.0)

RETURN TICKETS — 10% reduction on twice the one way fare is granted on all international return tickets provided that the return ticket is bought at the time of purchasing the outward ticket.

VALIDITY OF TICKETS — The period of validity of all tickets is one year from date of initial flight. Unused tickets shall expire one year from the date of issue.



International Fares

INTERNATIONAL FREIGHT REBATES ON CAIRO, NAIROBI AND KARACHI SERVICES AS PER STANDARD I.A.T.A. REGULATIONS.

Passengers fares in Eth. \$
Freight rates per kg. in Eth. cents
£.stg. = Eth. \$ 7 1 U.S. Dollar = Eth. \$ 2.50
L.Eg. 1 = Eth. \$ 7.18

Please request full information about through fares to African, European & USA destinations

These fares incorporate increases effective May 15th 1952

Addis Ababa to	OW	RT	FRT
Aden	130.00	234.00	0.73
Amsterdam	847.00	1525.00	3.68
Asmara	137.00	247.00	0.78
Assab	105.00	189.00	0.60
Athens	574.00	1034.00	2.88
Brussels	840.00	1512.00	—
Cairo	460.00	828.00	2.63
Cantoniera	81.00	154.00	0.46
Copenhagen	910.00	1638.00	—
Dahran	457.00	823.00	2.61
Dire Dawa	50.00	95.00	0.30
Djibouti	91.00	164.00	0.53
Geneva	826.00	1487.00	3.50
Jeddah	266.00	479.00	1.52
Karachi	475.00	855.00	2.71
London	854.00	1537.00	3.68
Milan	770.00	1396.00	—
Nairobi	200.00	360.00	1.14
New York T	1527.00	2748.00	—
Off season	—	2575.00	—
New York F	1839.00	3310.00	—
Off season	—	3058.00	—
Oslo	973.00	1752.00	—
Paris	826.00	1487.00	—
Port Sudan	250.00	450.00	1.43
Rome	728.00	1311.00	—
Stockholm	973.00	1752.00	—
Zurich	826.00	1487.00	3.50
Aden to			
Asmara	267.00	481.00	1.53
Assab	39.00	70.00	0.22
Athens	574.00	1034.00	2.88
Cairo	460.00	828.00	2.63
Cantoniera	62.00	112.00	0.35
Dharan	457.00	823.00	2.61
Dire Dawa	89.00	160.00	0.51
Djibouti	49.00	88.00	0.30
Geneva	826.00	1487.00	3.50
Jeddah	396.00	713.00	2.26
London	854.00	1537.00	3.68
Nairobi	330.00	594.00	1.89
New York T	1527.00	2748.00	—
Off season	—	2575.00	—
New York F	1839.00	3310.00	—
Off season	—	3058.00	—
Paris	826.00	1487.00	—
Port Sudan	380.00	684.00	2.17
Rome	728.00	1311.00	—
Zurich	826.00	1487.00	3.50

	OW	RT	FRT
Asmara to			
Athens	448.00	807.00	2.45
Cairo	329.00	592.00	1.88
Dahran	335.00	605.00	1.91
Dire Dawa	187.00	342.00	1.07
Geneva	728.00	1311.00	3.20
Jeddah	140.00	252.00	0.79
Karachi	475.00	855.00	2.71
London	756.00	1361.00	—
Nairobi	329.00	592.00	1.87
New York T	1429.00	2572.00	—
Off season	—	2399.00	—
New York F	1741.00	3134.00	—
Off season	—	2881.00	—
Paris	728.00	1311.00	3.33
Port Sudan	114.00	205.00	0.62
Rome	616.00	1109.00	2.80
Zurich	728.00	1311.00	3.20
Assab to			
Cantoniera	24.00	43.00	0.14
Cairo to			
Dire Dawa	460.00	828.00	2.63
Djibouti	460.00	828.00	2.63
Nairobi	567.00	1021.00	3.24
Dahran to			
Karachi	263.00	473.00	1.64
Nairobi	540.00	972.00	3.38
Dire Dawa to			
Djibouti	41.00	74.00	0.25
Nairobi	250.00	455.00	1.43
Djibouti to			
Nairobi	287.00	517.00	1.64
Jeddah to			
Karachi	481.00	866.00	2.75
Nairobi	455.00	819.00	2.60
Karachi to			
Nairobi	546.00	983.00	2.89
Nairobi to			
Athens	742.00	1336.00	3.33
Geneva	966.00	1739.00	—
London	980.00	1764.00	—
New York T	1653.00	2975.00	—
Off season	—	2802.00	—
New York F	1965.00	3537.00	—
Off season	—	3285.00	—
Paris	966.00	1739.00	4.08
Port Sudan	434.00	781.00	2.48
Rome	875.00	1575.00	3.60
Zurich	966.00	1739.00	—

T = TOURIST FARES
 F = FIRST CLASS FARES

ETHIOPIAN AIR LINES INC.

ADDIS ABABA - ETHIOPIA.

PRESIDENT: H.E. LIJ YILMA DERESSA
 GENERAL MANAGER: W.G. GOLIEEN
 SECRETARY TREASURER: W. WILSON
 OPERATIONS MANAGER: V. HARRELL
 GENERAL SALES MANAGER: WALTER BROWN JR.

HEAD OFFICE:
 P.O. BOX 1755, ADDIS ABABA
 CABLE: ETHAIR

SALES OFFICE:
 PRINCESS TENAGNE WORK BUILDING
 HAILE SELASSIE 1st SQUARE
 ADDIS ABABA

CITY TICKET OFFICE:
 PRINCESS TENAGNE WORK BUILDING
 HAILE SELASSIE 1st SQUARE
 ADDIS ABABA
 CABLE: AIR BOOKINGS

RAS HOTEL TICKET OFFICE:
 RAS HOTEL, CHURCHILL ROAD
 ADDIS ABABA

MAIN OFFICES AND AGENTS

ADEN	IMMEDIATE TRANSPORT COMPANY	Telgms.: - ETHAIR
	Steamer Point	Telgms.: - ETHAIR
ASMARA	UFFICIO VIAGGI	Telgms.: - ETHAIR
BOMBAY	IMMEDIATE TRANSPORT COMPANY	Telgms.: - ETHAIR
	SEA GREEN HOTEL	Telgms.: - ETHAIR
CAIRO	TWA	TRANS WORLD AIRLINES
		Telgms.: - TWAIR
DHAHRAN	TWA	TRANS WORLD AIRLINES
		Telgms.: - TWAIR
DJIBOUTI	ETHIOPIAN AIR LINES	Telgms.: - ETHAIR
DIRE DAWA	ATO TEFAYE KEJELA	Telgms.: - ETHAIR
		Telgms.: - ETHAIR
JEDDAH	M.F.A. ARAB	Telgms.: - ETHAIR
KARACHI	TRAVELOGUE	Telgms.: - ETHIOPAIR
KHARTOUM	SUDAN AIRWAYS	Telgms.: - SUDANAIR
NAIROBI	ETHIOPIAN AIR LINES	Telgms.: - ETHAIR
	AMERICA HOUSE, Stewart Street,	Telgms.: - ETHAIR
PORT SUDAN	AIR HANDLING & BOOKING AGENCY	Telgms.: - ETHAIR
		Telgms.: - ETHAIR
TWA		
KLM		
AIR FRANCE	OFFICES THROUGHOUT THE WORLD	
S.A.S.		
SWISS AIR		

ETHIOPIAN AIRLINES
 THE WONDERLAND ROUTE