

# LUXURIOUS CABIN LINERS!

## NEW YORK-BOSTON SCHEDULE

(Effective June 5, 1930)

### Daily—(Except Sundays)—Daylight Saving Time

Plane-bus leaves:	Morning Plane	Noon Plane	Mid-Afternoon Plane	Afternoon Plane
Capitol Terminal	7:55 a.m.	11:25 a.m.	1:55 p.m.	4:25 p.m.
Hotel Pennsylvania	8:15 a.m.	11:45 a.m.	2:15 p.m.	4:45 p.m.
<i>Plane leaves</i>				
Newark Airport	9:00 a.m.	12:30 p.m.	3:00 p.m.	5:30 p.m.
<i>Arrives</i>				
Boston Airport	10:45 a.m.	2:15 p.m.	4:45 p.m.	7:15 p.m.
<i>Plane-bus arrives:</i>				
Hotel Statler	11:20 a.m.	2:50 p.m.	5:20 p.m.	7:50 p.m.
B. & W. Terminal	11:25 a.m.	2:55 p.m.	5:25 p.m.	7:55 p.m.

Buses stop at Irvington Cafeteria, Varick St., east end of Holland Tunnel, 12 minutes after leaving Hotel Pennsylvania, New York. Special Buses meet all planes at Boston end, going through downtown district and then to Parker House and Hotel Statler—discharging passengers on the way.

**1 HOUR  
45 MIN.  
FLYING  
TIME**



**BOSTON**

**WORCESTER**

**PUTNAM  
PROVIDENCE**

**WILLIMANTIC**



## BOSTON-NEW YORK SCHEDULE

(Effective June 5, 1930)

### Daily—(Except Sundays)—Daylight Saving Time

Plane-bus leaves:	Morning Plane	Mid-Morning Plane	Noon Plane	Afternoon Plane
B. & W. Terminal	7:20 a.m.	9:50 a.m.	12:20 p.m.	3:50 p.m.
Hotel Statler	7:25 a.m.	9:55 a.m.	12:25 p.m.	3:55 p.m.
<i>Plane leaves</i>				
Boston Airport	8:00 a.m.	10:30 a.m.	1:00 p.m.	4:30 p.m.
<i>Arrives</i>				
Newark Airport	10:00 a.m.	12:30 p.m.	3:00 p.m.	6:30 p.m.
<i>Plane-bus arrives:</i>				
Hotel Pennsylvania	10:45 a.m.	1:15 p.m.	3:45 p.m.	7:15 p.m.
Capitol Terminal	11:00 a.m.	1:30 p.m.	4:00 p.m.	7:30 p.m.

Buses stop at Parker House, Boston, 5 minutes after leaving Hotel Statler, Boston, and at Maverick Sq., East Boston, 20 minutes after leaving Hotel Statler, Boston. Special Buses meet all planes at New York end, going through downtown district and then to the Hotel Pennsylvania, discharging passengers on the way.

**FARE \$17.43 - ROUND TRIP \$33.12**



**NEW HAVEN**

**NEW YORK**

# NEW YORK-BOSTON BOSTON-NEW YORK by AIR



**1 HOUR  
45 MIN.  
FLYING  
TIME**

**4 TRIPS DAILY**

**4 TRIPS DAILY**

**COLONIAL  
AIR TRANSPORT INC**  
DIVISION OF AMERICAN AIRWAYS

**COLONIAL  
AIR TRANSPORT INC**  
DIVISION OF AMERICAN AIRWAYS

EFFECTIVE JUNE 5, 1930

EFFECTIVE JUNE 5, 1930



# Less Time in Travel—More Time for Business and Pleasure—via “The Modern Way”



Trained Mechanics “Tune” the Plane



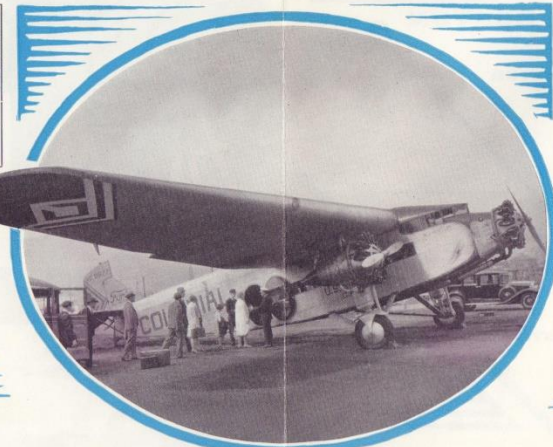
Boarding the Bus for the Airport



“Ships that Pass in the Sky”



Luxurious Interior



Boarding the Plane for a Swift, Safe Trip



Fort Schuyler—A View Along the Sound



Downtown Boston and the Custom House



Manhattan from the Air



Beautiful Wellesley College from the Air

## Service to the Airports



For the convenience of passengers, Pullman Coach Buses run between the airports and central points in each city. These buses connect with all planes at leaving time and are on hand at airports to meet all planes on arrival.

A charge of 50c in Boston—and of 75c in New York—is made for bus transportation to and from the airports. Bus tickets can be bought when making reservations or on buses.

The complete schedule of leaving and arrival times of all buses, and the points at which they stop are shown on back page.

## Convenience!

THE Colonial schedule—of four planes daily—gives patrons a maximum of convenience in “commuting by air” between New York and Boston.

The early morning and mid-morning planes leave at an hour suitable to meet noonday or afternoon appointments with a minimum of wasted time and a return the same day, if desired.

The midday and afternoon planes are also scheduled for convenient departure and arrival. By travelling on the noon plane the unprofitable noon hour is spent in flight. Or, you may take the afternoon plane to either city, spend the evening in social activity and devote the next morning—or the whole day—to business, with a choice of several planes for your return journey.

## A Fleet of Three-Engine Sky-Ships

GIANT multi-motored planes travel the New York-Boston route.

They are powered by three Pratt and Whitney “Wasp” engines—as efficient and reliable as can be obtained for use on passenger planes.

All of these cabin cruisers are now equipped with the latest type of radio beacon and radio telephone apparatus. Powerful radio impulses sent out from the airports show the pilot instantly any deviation from the regular “path.” The radio telephone is used to keep pilot and terminal airport in constant touch.

The pilots are all men of long experience, thoroughly qualified in character and judgment to be responsible for the safety of passengers. A pilot and reserve pilot are always in the cockpit, and through the dual control equipment either can operate the plane.

(The photographs used in this folder are copyrighted by Fairchild Aerial Surveys, Inc., Ewing-Galloway, and Underwood and Underwood)

## Comfort!

WHEN once you are aboard a Colonial plane, you will find that every provision has been made for your comfort.

Deep wicker chairs invite you to relax and enjoy to the fullest the pleasures of the trip. You may read—the latest magazines and newspapers are provided. A souvenir “Air Map” given to each passenger, contains maps and pictures of the route, a full description of the planes—and other interesting material. Writing can be done en route if desired—you can attend to business correspondence or send your friends a “message from the air.” The co-pilot will supply you with stationery.

You will find a washroom and toilet at the rear of the plane.

As for the scenery—you must see it to believe it. As you look from the wide window beside your seat, miles on miles of it are spread out carpet-like before you.

In short—nothing that will make your trip an everlasting pleasure has been forgotten!

## Reservations



Reservations and bus tickets are easily obtained in either city through the Colonial offices, at the Terminal hotels, or through other leading hotels and travel agencies. They can also be obtained at the B. & W. Red Star Bus Terminal in Boston and the Capitol Bus Terminal in New York.

A special arrangement with the Western Union Telegraph Company also makes possible the making of reservations through any office of this company in New York or Boston, or through any Western Union office in cities within a 100-mile radius of New York and Boston.

# COLONIAL AIR TRANSPORT, INC.

Division of American Airways

270 Madison Avenue, New York

Boston Airport, Boston

NEW YORK: Phone ASHland 2401

BOSTON: Phone EAST Boston 2040

Cat. 18-104-6-30

Daily Service  
Montreal — Albany — New York

Twice Daily  
Buffalo — Toronto