

C·N·A·C·



郵運客戴

司公空航國中

五五九二一話電 号一十五路東廣海上司公總

AIR MAIL
PASSENGER SERVICE

CHINA NATIONAL AVIATION CORP.

HEAD OFFICE: 51 CANTON RD, SHANGHAI

TEL. 12955

IN a country like China where the total area amounts to 4,279,170 square miles, to "go by air" is the only logical means of travel for a quick trip from one city to another, no matter if the trip be made for business or pleasure.

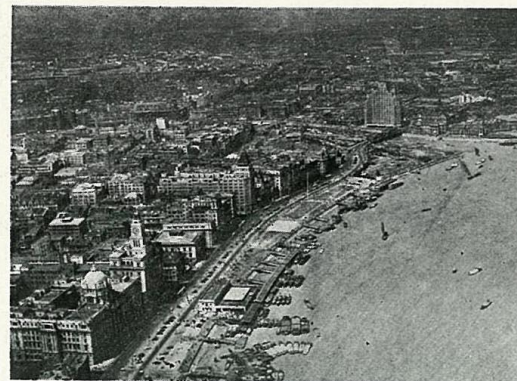
"Fly" and save time. Make your minute more productive. Keep more in touch with important affairs and link your intercity contacts together by CNAC lines. CNAC lines connect over twenty cities most of which are important business centers in China. Only by flying can you keep down loss of time through travel.

Make full use of your time for a pleasure trip by flying to different points of interest. Call on Peiping, the old capital of the Ching Dynasty, where you will see the famous Great Wall, a gigantic work done by the Chinese two thousand years ago, creeping endlessly among mountains beyond the horizon . . . where the old palaces will present to you the best work of Chinese architectures and recall you to the vivid history and anecdotes of the former Chinese Emperors . . . and where you are always greeted by the native people. It is a place full of quaint old-world charms. It is a modern city coated with old Chinese philosophy. Look westward. Along the upper Yangtze River you will see the beautiful mountains towering on either side of the river form the world-famous Yangtze Gorges with the rapids of the River streaming and dashing below like a silver cord. Go to the south. Canton is a bustling and boisterous market in South China. Many splendid hotels and amusements places seek to gratify the whims of visitors and here, Chinese spirit is presented in its light side.

No need now to spend days or even weeks in dullness either on board a steamship or on train for the mere purpose of catching a glimpse of these places which are so interesting and so colorful and have so much to offer to visitors. Aeroplane has reduced the ordinary time of travel to only a few hours . . . hours full of interest.

On wings you travel through the air and perch, like a bird, from city to city. Tired of reading, you, sitting on a comfortable lounge chair in the plane, will see through the window, at a slight turn of your head, a long and living panorama unrolled beneath you. Shanghai is shown to you in a nutshell. The new capital of China (Nanking), the Chicago of China (Hankow), the old town established as early as the first decade of twelve century (Wu-chang), the famous watering place (Tsingtao), the thriving ports (like Tientsin, Foochow, Amoy etc.) are seen as if through a kaleidoscope.

Travel by aeroplane frees you from the delay and discomfort of congested highways, eliminates the nuisance of dust, heat and crowds and gets you to your destination speedily, safely and in comfort.



THE BUND, SHANGHAI

中國航空公司 CHINA NATIONAL AVIATION CORPORATION GENERAL INFORMATION PASSENGERS

RESERVATIONS: Seats may be reserved or tickets purchased at any of the C.N.A.C. offices or at leading travel bureaux.

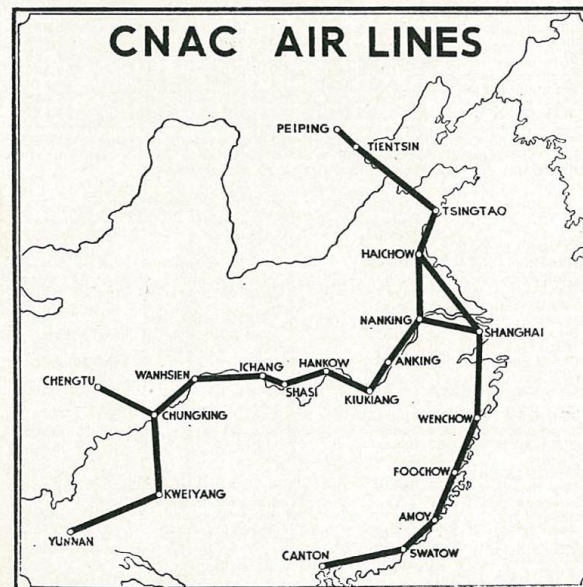
Return portions of round-trip tickets cannot be used unless seat reservations are made in advance. The unused portions of tickets must be used within 30 days from date of issue.

Owing to limited number of seats on our plane, passengers are requested to make their reservations in advance to make sure that they will not be left behind.

BAGGAGE: Fifteen kilos of baggage will be carried free; baggage in excess of 15 kilos will be carried only subject to the loading capacity of the plane and will be charged for by the kilo at 1% of passenger fare rate.

STOP-OVERS: Ten-day stop-overs will be allowed on all tickets provided reservations are made in advance.

CANCELLATION: The corporation will make no refunds unless space is cancelled 24 hours before departure of plane. If cancelled on less than 24 hours notice refunds will only be made if space is resold.





YANGTSE GORGES

AIR MAIL

25 cents per unit of 20 grams plus 5 cents ordinary postage for an air mail letter to any part of China irrespective of distance. Use air mail stamps or ordinary postage stamps. Mark envelope plainly "Air Mail" or "Par Avion" or 航空.

Air-mail letters receive first attention from the addressee.

If there is any doubt about your letter reaching the addressee on the day of the airplane arrival, you can add the notation "Express Delivery" and also add 12 cents additional postage.

AIR EXPRESS

Parcels and printed matter can all be sent by air with the speed of Air Mail.

TABLE SHOWING PROGRESS MADE BY CNAC

	Kilometers Flown	Passenger K.M. Flown	Passenger Carried	Mail Carried Kilos of
1929.....	93,167	106,875	854	3,932
1930.....	531,196	1,027,902	2,654	17,893
1931.....	716,201	976,831	2,296	34,428
1932.....	693,842	1,247,265	3,153	50,851
1933.....	1,024,963	1,451,384	3,138	49,246
1934.....	1,435,460	2,553,283	5,224	58,052
1935.....	1,955,801	5,857,103	10,404	64,527

The following table of time for mail and passenger transportation by fastest ordinary methods as compared to time taken by air transportation will account for the growing popularity for air services:

	Fast Ordinary Methods	Present Regular Air Service	Present Express Air Service
SHANGHAI to			
Nanking	8 hours	1 hr. 20 mins.	1 hour
Kiukiang	3 days	3 hrs. 22 mins.	2 hrs. 35 mins.
Hankow	4 days	4 hrs. 45 mins.	3 hrs. 30 mins.
HANKOW to			
Shasi	2 days	1 hr. 30 mins.	
Ichang	3 days	2 hrs. 30 mins.	1 hr. 5 mins.
Wanhsien	7 days	4 hrs. 55 mins.	
Chungking	9 days	7 hours	3 hrs. 10 mins.
CHUNGKING to			
Chengtu	2 to 5 days	2 hours	1 hrs. 10 mins.
SHANGHAI to			
Tsingtao	36 hours	3 hours	
Tientsin	36 hours	4 hrs. 35 mins.	3 hrs. 10 mins.
Peiping	38 hours	8 hours	5 hrs. 15 mins.
Shanghai to			
Wenchow	43 hours	9 hours	6 hours
Foochow	1 day	1 hr. 55 mins.	
Amoy	2 days	3 hrs. 35 mins.	
Swatow	3 days	5 hrs. 5 mins.	
Canton	3½ days	6 hrs. 25 mins.	
CHUNGKING to			
Kweiyang	3 to 5 days	8 hrs. 30 mins.	
Kunming	12 days	1 hr. 45 mins.	
	24 days	4 hrs. 15 mins.	



STRAND BEACH, TSINGTAO

滬蓉綫特別快班 (SHANGHAI-CHENG TU LINE EXPRESS SCHEDULE)

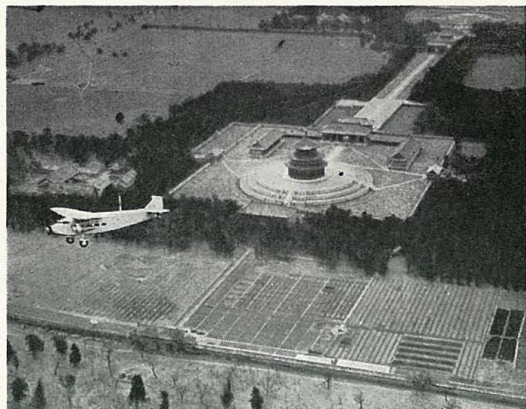
西上機 West Bound	(Read Down)	向 下 讀	向 上 讀	(Read Up)	東下機 East Bound
7.00 Dep. 開	K. M. 0	上海 Shanghai	到 Arr.	16.50	
8.00 Arr. 到		南京 Nanking	開 Dep.	15.50	
8.10 Dep. 開	288	九江 Kiukiang	到 Arr.	15.40	
9.35 Arr. 到		漢口 Hankow	開 Dep.	14.15	
9.45 Dep. 開	664	宜昌 Ichang	到 Arr.	14.05	
10.30 Arr. 到		重慶 Chungking	開 Dep.	13.20	
10.55 Dep. 開	864	成都 Chengtu	到 Arr.	12.55	
12.00 Arr. 到			開 Dep.	11.50	
12.10 Dep. 開	1168		到 Arr.	11.40	
14.05 Arr. 到			開 Dep.	9.45	
14.30 Dep. 開	1691		到 Arr.	9.20	
15.35 Arr. 到	1981		到 Arr.	8.15	

西上機每逢星期一四飛行
West Bound on every Monday & Thursday
東下機每逢星期二五飛行
East Bound on every Tuesday & Friday

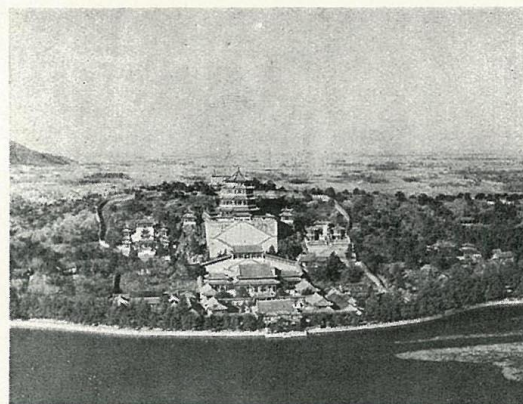
滬漢段 (SHANGHAI-HANKOW SECTION)

西上機 West Bound	(Read Down)	向 下 讀	向 上 讀	(Read Up)	東下機 East Bound
7.00 Dep. 開	K. M. 0	上海 Shanghai	到 Arr.	11.45	
8.20 Arr. 到		南京 Nanking	開 Dep.	10.25	
8.30 Dep. 開	288	安慶 Anking	到 Arr.	10.15	
	529				
10.22 Arr. 到		九江 Kiukiang	開 Dep.	8.23	
10.40 Dep. 開	664	漢口 Hankow	到 Arr.	8.05	
11.45 Arr. 到	864		開 Dep.	7.00	

西上機每逢星期二三五六日飛行
West Bound on every Tuesday Wednesday Friday, Saturday, Sunday
東下機每逢星期一三五六日飛行
East Bound on every Monday Wednesday, Thursday, Saturday, Sunday
每週其餘日期開特別快班
(on other days of the week express schedules will be flown)



TEMPLE OF HEAVEN, PEIPING



SUMMER PALACE, PEIPING

漢 渝 段
(HANKOW-CHUNGKING SECTION)

西上機	(Read Down)	向 下 讀	向 上 讀	(Read Up)	東下機
		K. M.			
7.30 Dep. 開	0		漢口 Hankow	到 Arr.	15.50
9.00 Arr. 到	197		沙市 Shasi	開 Dep.	14.20
9.15 Dep. 開				到 Arr.	14.15
10.00 Arr. 到	304		宜昌 Ichang	開 Dep.	13.30
10.15 Dep. 開				到 Arr.	13.15
12.25 Arr. 到	591		萬縣 Wanhsien	開 Dep.	11.05
12.40 Dep. 開				到 Arr.	10.50
14.30 Arr. 到	827		重慶 Chungking	開 Dep.	9.00

西上機每逢星期二三五日飛行
West Bound on every Tuesday Wednesday Friday Sunday
東下機每逢星期一三四六飛行
East Bound on every Monday, Wednesday, Thursday, Saturday
每週其餘日期開特別快班
(on other days of the week express schedules will be flown)

渝 蓉 段
(CHENG TU-CHUNGKING SECTION)

東下機	(Read Down)	向 下 讀	向 上 讀	(Read Up)	西上機
East Bound		K. M.			West Bound
12.00 Dep. 開	0		成都 Chengtu	到 Arr.	16.30
14.00 Arr. 到	290		重慶 Chungking	開 Dep.	14.30

每日飛來同一次
Daily Service

滬 蓉 綫
(SHANGHAI-CHENG TU LINE)

上海 單程	南京	九江	漢口	沙市	宜昌	萬縣	重慶	成都
Shanghai Single Trip	Nanking	Kiukiang	Hankow	Shasi	Ichang	Wanhsien	Chungking	Chengtu
25	75	35	85	105	125	155	180	215
100	100	150	170	190	220	260	300	340
120	120	170	190	220	260	300	340	380
170	170	220	260	300	340	380	420	460
190	190	240	280	320	360	400	440	480
280	280	330	370	410	450	490	530	570
340	340	390	430	470	510	550	590	630
400	400	450	490	530	570	610	650	690

All above fares in dollars of Chinese national currency.

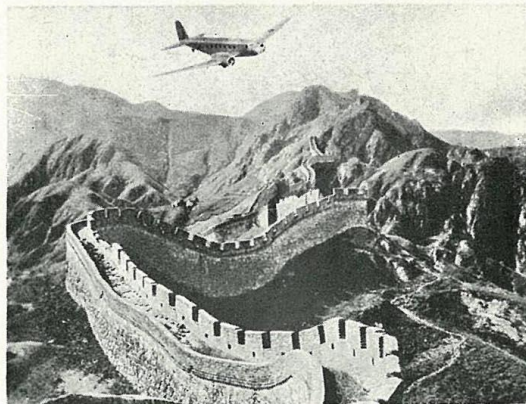
滬 平 綫
SHANGHAI-PEIPING LINE
(Express)

北上機	(Read Down)	向 下 讀	向 上 讀	(Read Up)	南下機
North Bound		K. M.			South Bound
7.30 Dep. 開	0		上海 Shanghai	到 Arr.	13.50
8.42 Arr. 到	288		南京 Nanking	開 Dep.	12.38
9.00 Dep. 開				到 Arr.	12.20
11.00 Arr. 到	648		青島 Tsingtao	開 Dep.	10.20
11.25 Dep. 開				到 Arr.	9.55
13.12 Arr. 到	1087		天津 Tientsin	開 Dep.	8.08
13.17 Dep. 開				到 Arr.	8.03
13.50 Arr. 到	1197		北平 Peiping	開 Dep.	7.30

用道格拉斯飛機
(Douglas Plane used)

北上機每逢星期二五飛行
南下機每逢星期三六飛行

North Bound on every Tuesday & Friday
South Bound on every Wednesday & Saturday



GREAT WALL

滬平綫
(SHANGHAI-PEIPING LINE)

北上機 North Bound		(Read Down)	向下讀	向上讀	(Read Up)	南下機 South Bound
		K. M.	上海 Shanghai	▲	到 Arr.	
6.30	Dep. 開	0				15.30
9.30	Arr. 到		海州 Haichow	▲	開 Dep.	12.30
9.45	Dep. 開	443				12.15
11.05	Arr. 到		青島 Tsingtao	▲	開 Dep.	10.55
11.20	Dep. 開	648				10.40
14.30	Arr. 到		天津 Tientsin	▲	開 Dep.	7.30
14.45	Dep. 開	1087				7.15
15.30	Arr. 到	1197	北平 Peiping	▼	開 Dep.	6.30

用司汀遜飛機
(Stinson Plane used)

北上機每逢星期日飛行
南下機每逢星期一飛行

North Bound on every Sunday
South Bound on every Monday

滬平綫
(SHANGHAI-PEIPING LINE)

上海 單程 Shanghai SINGLE TRIP					來回 ROUND TRIP					上海 Shanghai				
\$25	南京 Nanking													\$45
\$55	\$30	海州 Haichow								\$50	\$95			
\$90	\$70	\$40	青島 Tsingtao							\$70	\$120	\$160		
\$130	\$120	\$100	\$70	天津 Tientsin						\$120	\$180	\$210	\$240	
\$150	\$140	\$110	\$80	\$25	北平 Peiping					\$45	\$140	\$200	\$250	\$270



SUN YAT SEN'S MAUSOLEUM, NANKING

滬粵綫
(SHANGHAI-CANTON LINE)

南下機 South Bound		(Read Down)	向下讀	向上讀	(Read Up)	北上機 North Bound
		K. M.	上海 Shanghai	▲	到 Arr.	
6.30	Dep. 開	0				15.00
8.25	Arr. 到		溫州 Wenchow	▲	開 Dep.	18.05
8.45	Dep. 開	443				12.45
10.05	Arr. 到		福州 Foochow	▲	開 Dep.	11.25
10.25	Dep. 開	731				11.05
11.35	Arr. 到		廈門 Amoy	▲	開 Dep.	9.55
11.55	Dep. 開	1001				9.35
12.55	Arr. 到		汕頭 Swatow	▲	開 Dep.	8.35
13.15	Dep. 開	1204				8.15
15.00	Arr. 到	1623	廣州 Canton	▼	開 Dep.	6.30

南下機每逢星期二四飛行 South Bound on Every Tues., Thus.
北上機每逢星期四日飛行 North Bound on Every Thursday, Sunday.

滬粵綫
(SHANGHAI-CANTON LINE)

上海 單程 Shanghai SINGLE TRIP					來回 ROUND TRIP					上海 Shanghai				
\$65	溫州 Wenchow													\$115
\$115	\$55	福州 Foochow								\$100	\$205			
\$150	\$100	\$45	廈門 Amoy							\$80	\$180	\$270		
\$170	\$130	\$80	\$35	汕頭 Swatow						\$60	\$140	\$230	\$300	
\$220	\$190	\$150	\$110	\$75	廣州 Canton					\$135	\$195	\$270	\$340	\$390

